



Child Care Facility Business Licence Application

Glow and Grow Children's Centre

Public Meeting

September 20, 2022

Child Care Facilities Business Regulation Bylaw

Business licence applications for a child care facility with 11 to 20 children:

- Public Meeting required
- Council approval required

Public Meeting notice requirements:

- Notify all properties located within 50m of the child care facility and within a cul-de-sac (if applicable)
- At least 10 days prior to meeting



Glow and Grow Children's Centre

Proposal:

Increase the current child care capacity from 8 children to 16 children (8 multi-aged children and 8 multi-aged children, with no child under 36 months).

- Opened January 2021
- Operates from applicant's home
- Maintains a waitlist



Planning Guidelines for Group Child Care in Residential Zones

- Updates approved by Council in January 2014
- Applies to child care applications for facilities with more than 8 children in a residential building

Criteria:

- Location
- Transportation needs
- Neighbourhood character
- Neighbourhood consultation
- Facility design

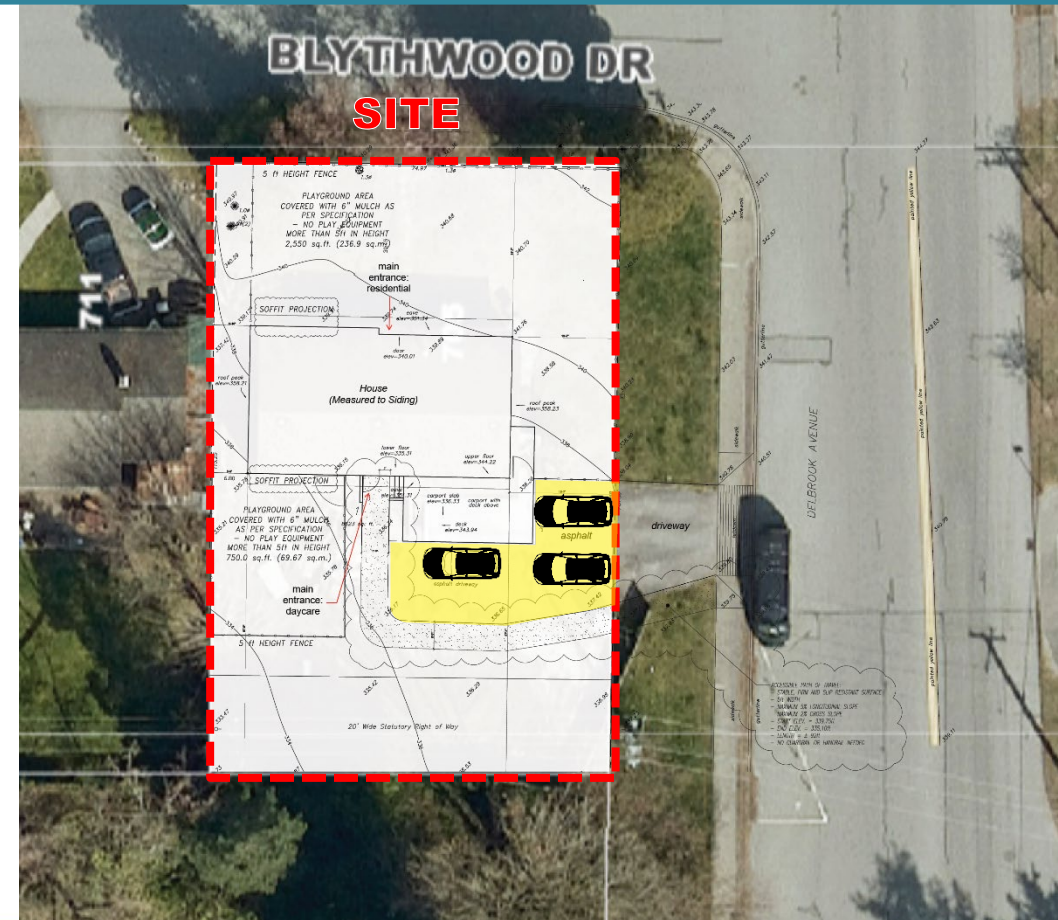
Planning Guidelines: Location

- Delbrook neighbourhood
- Delbrook Avenue: collector road
- Community amenities: Delbrook Fields (10 m), Playground, Delbrook Community Centre (500 m)
- Nearby child care facilities: The Kid's Castle Daycare, Babies Castle Daycare, Little Rascals Preschool, Merryland Daycare, Bella Balloon Childcare Centre, Limelight Daycare, Little Bunnies, and Delbrook Preschool



Planning Guidelines: Transportation Needs

- 4 parking stalls recommended by the Planning Guidelines; 2 required by Zoning Bylaw
- 3 parking stalls provided
- Maximum 4 staff, including the applicant and her partner who live on-site
- Drop-off and pick-up times: 7:30am and 5:30pm
- Parking available on-street, including 14 angle parking spots at Delbrook Field (~60 m away)



Planning Guidelines: Neighbourhood Character

- Outdoor play times:
 - 10:30am – 12:00pm
 - 3:30 pm – 5:30 pm
- Regular visits to nearby amenities for outdoor play
- Noise and privacy mitigation:
 - 5 ft. tall wood fence



Planning Guidelines: Facility Design

- Child care to be located on the main floor, contiguous with outdoor play area
- Large windows, access to natural light
- Outdoor play area: deck, sandbox, play structures, lawn
- 19 m² of outdoor play space per child available, which exceeds the 7 m² provincial requirement



Planning Guidelines: Neighbourhood Consultation

- Letter of Introduction delivered to neighbours within 50 m of child care
- Open house: July 14, 2022
- Prior to the open house one District resident contacted the District with concerns related to traffic and parking
- 5 community members attended:
 - 5 parents in support, confirmed they do not park on Blythwood Dr
 - No neighbours attended



Child Care Action Plan (2020)

- Child care is an essential building block in the creation of safe, healthy, and liveable communities
- Council approved the Child Care Action Plan in 2020
- 2,055 additional group child care spaces are needed in the District by 2030



355 West Queens Road
North Vancouver, BC
V7N 4N5

604-990-2311

