



Child Care Facility Business Licence Application

Flying Fish Childcare Centre

Public Meeting

March 8, 2022

Child Care Facilities Business Regulation Bylaw

Business licence applications for a child care facility with 11 to 20 children:

- Public Meeting required
- Council approval required

Public Meeting notice requirements:

- Notify all properties located within 50m of the child care facility and within a cul-de-sac (if applicable)
- At least 10 days prior to meeting

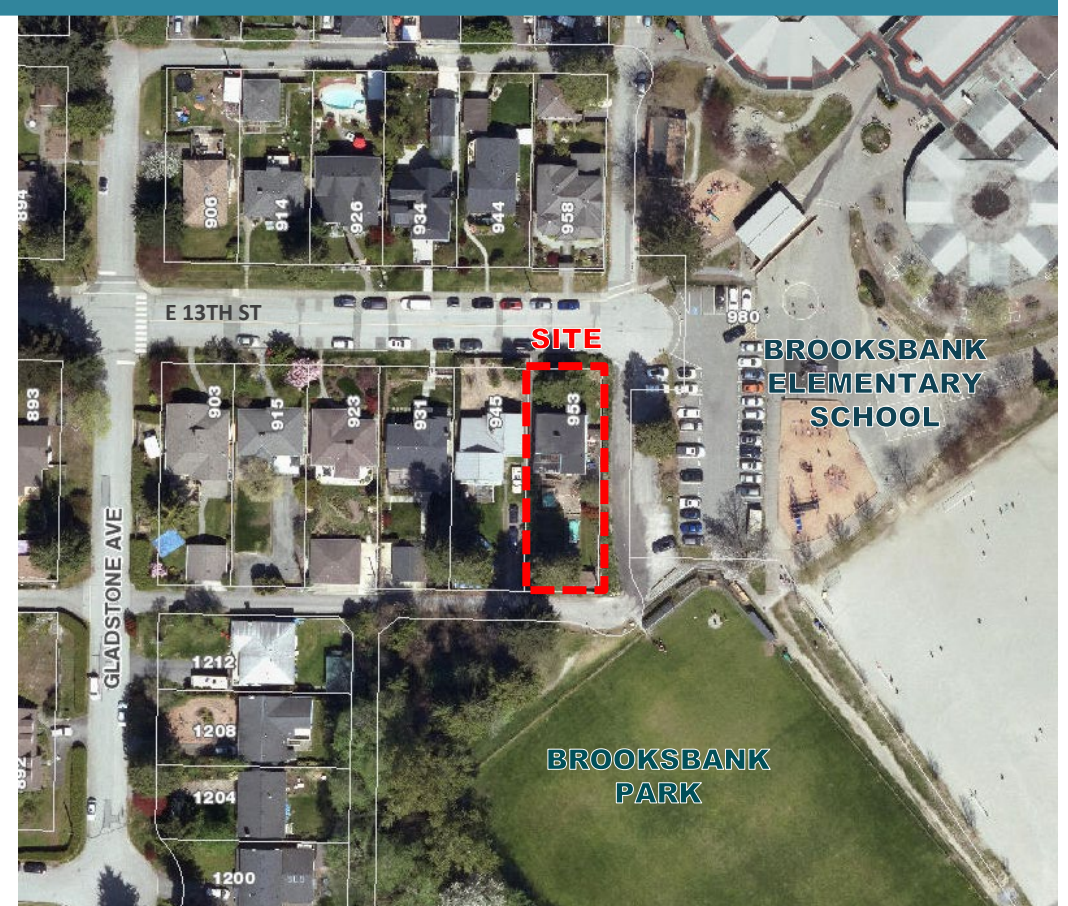


Flying Fish Childcare Centre

Proposal:

Increase the current child care capacity from 8 children to 18 preschool-aged children.

- Opened July 2021
- Operates from applicant's home
- No complaints received by the District regarding the child care
- Building upgraded in 2021



Planning Guidelines for Group Child Care in Residential Zones

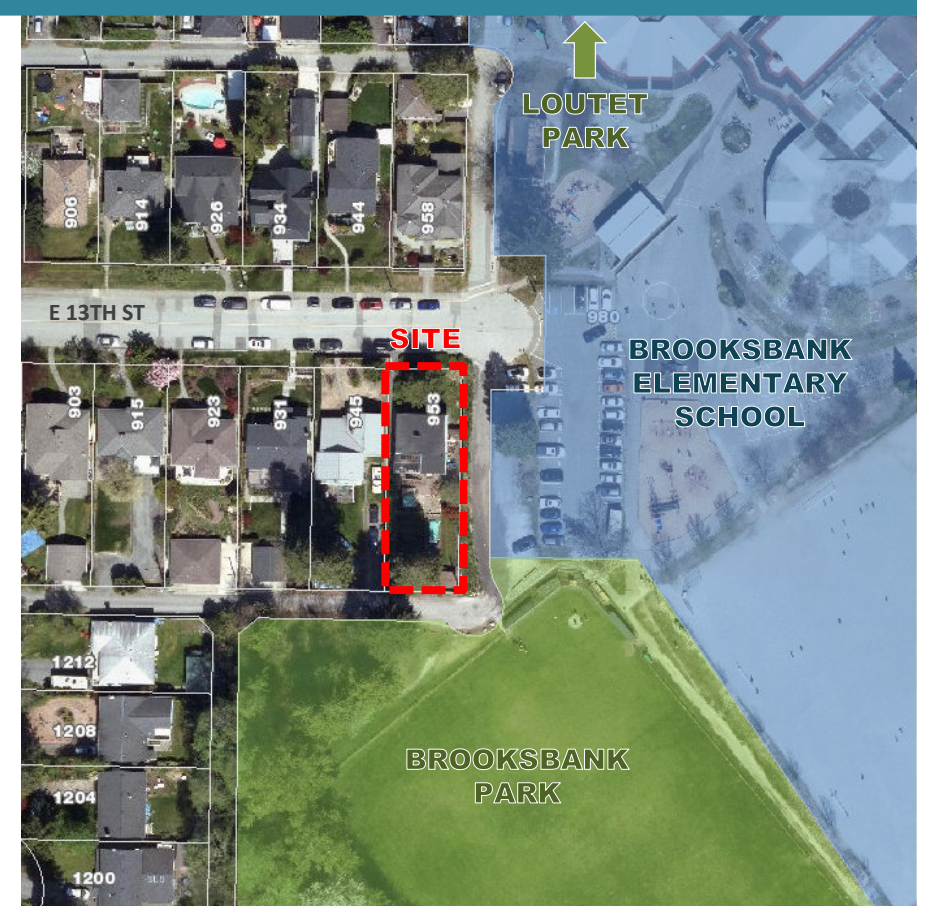
- Updates approved by Council in January 2014
- Applies to child care applications for facilities with more than 8 children in a residential building

Criteria:

- Location
- Transportation needs
- Neighbourhood character
- Neighbourhood consultation
- Facility design

Planning Guidelines: Location

- Keith Lynn neighbourhood
- East 13th Street: collector road, school zone
- Community amenities: Brooksbank Elementary School, Brooksbank Park, and Loutet Park (CNV)
- Nearby child care facilities: Wildflower Childcare, Fun Days, Sunshine Preschool, Sweet Cherry Blossom Daycare
- Flying Fish Childcare Centre's current waitlist has over 10 children



Planning Guidelines: Transportation Needs

- 4 off-street parking spaces recommended by the Planning Guidelines; 2 required by Zoning Bylaw
- 2 off-street parking spaces provided
- Maximum 3 staff, including the applicant, will work at any given time
- Drop-off and pick-up times: 7:30am and 5:30pm
- Available on-street and nearby



Planning Guidelines: Neighbourhood Character

- Outdoor play times:
 - 11am to noon
 - 2pm to 3pm
- Regular visits to nearby amenities for outdoor play
- Noise and privacy mitigation:
 - 6 ft. tall wood fence
 - Other solutions to consider include planting hedges at shared property line



Planning Guidelines: Facility Design

- Child care located on the main floor
- Outdoor play area: deck, sandbox, lawn
- 15 sq.m. of outdoor play space per child available, which exceeds the 7 sq.m. provincial requirement
- Large windows



Planning Guidelines: Neighbourhood Consultation

- Letter of Introduction delivered to neighbours within 50m of child care
- Virtual open house: February 9, 2022
- 4 neighbours attended
 - 1 neighbour in support
 - 1 neighbour with no concerns
 - 1 household expressed concerns regarding potential noise and privacy impacts



355 West Queens Road
North Vancouver, BC
V7N 4N5

604-990-2311

