



Maplewood Farm

Selina Merrick
Maplewood Farm Supervisor

Objectives

- Maplewood Farm History
- Farm operations
- Animal husbandry
- Animal enrichment & welfare
- Recent enhancements
- Importance of Maplewood Farm



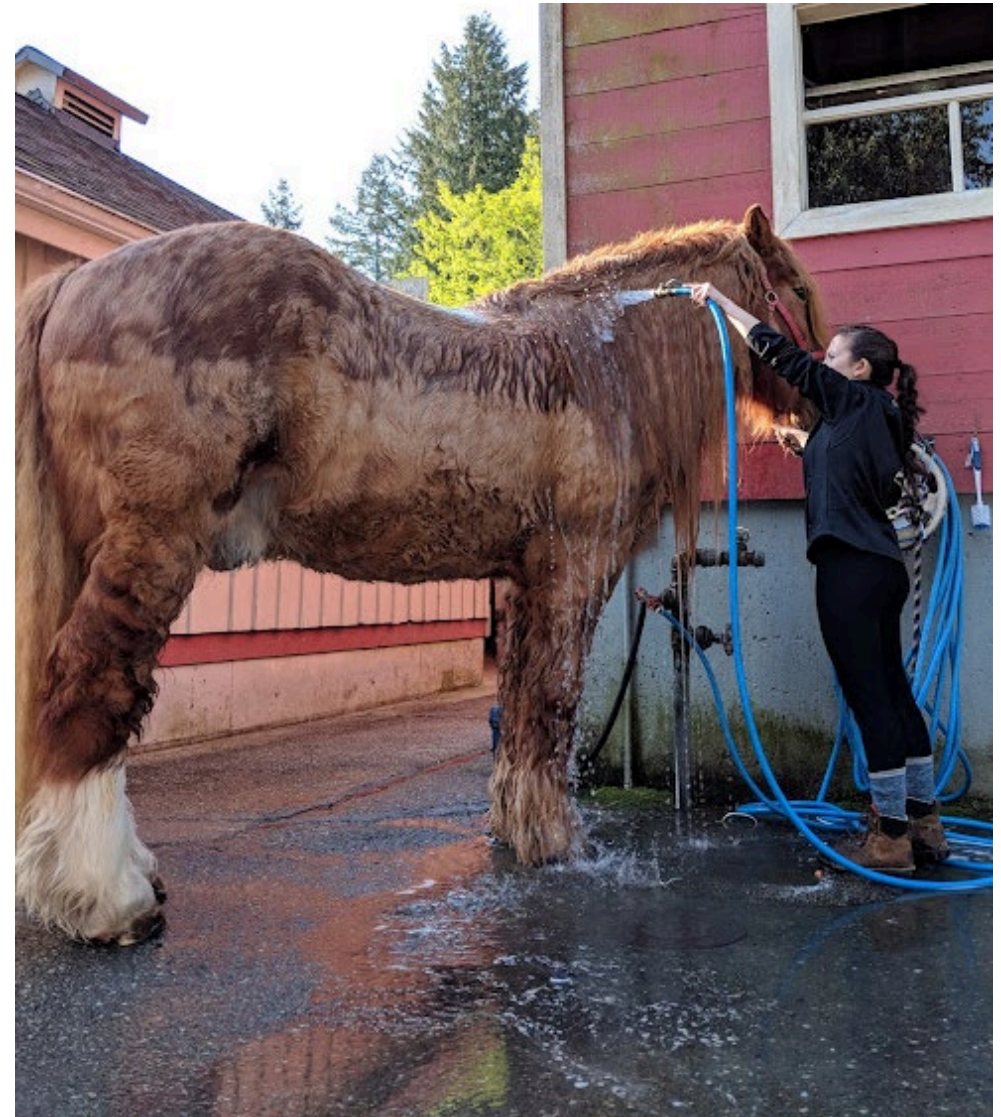
Maplewood Farm History

- During the 1920's developed as a dairy farm by Akiyo Kogo
- Purchased by the DNV in 1970, opened to the public in 1975
- Public able to engage and experience farm culture close to home



Average Day at the Farm

- Farmers work 6:30am-5pm, open to the public 10am-4pm
- Responsibilities include all feeding & watering, health checks
- Grooming, training, and daily enrichment
- Public education



Additional Responsibilities

- Facilitate volunteers and work experience students
- Public outreach displays and demonstrations
- Public events and birthday parties
- Responsible for maintaining community garden and greenhouse



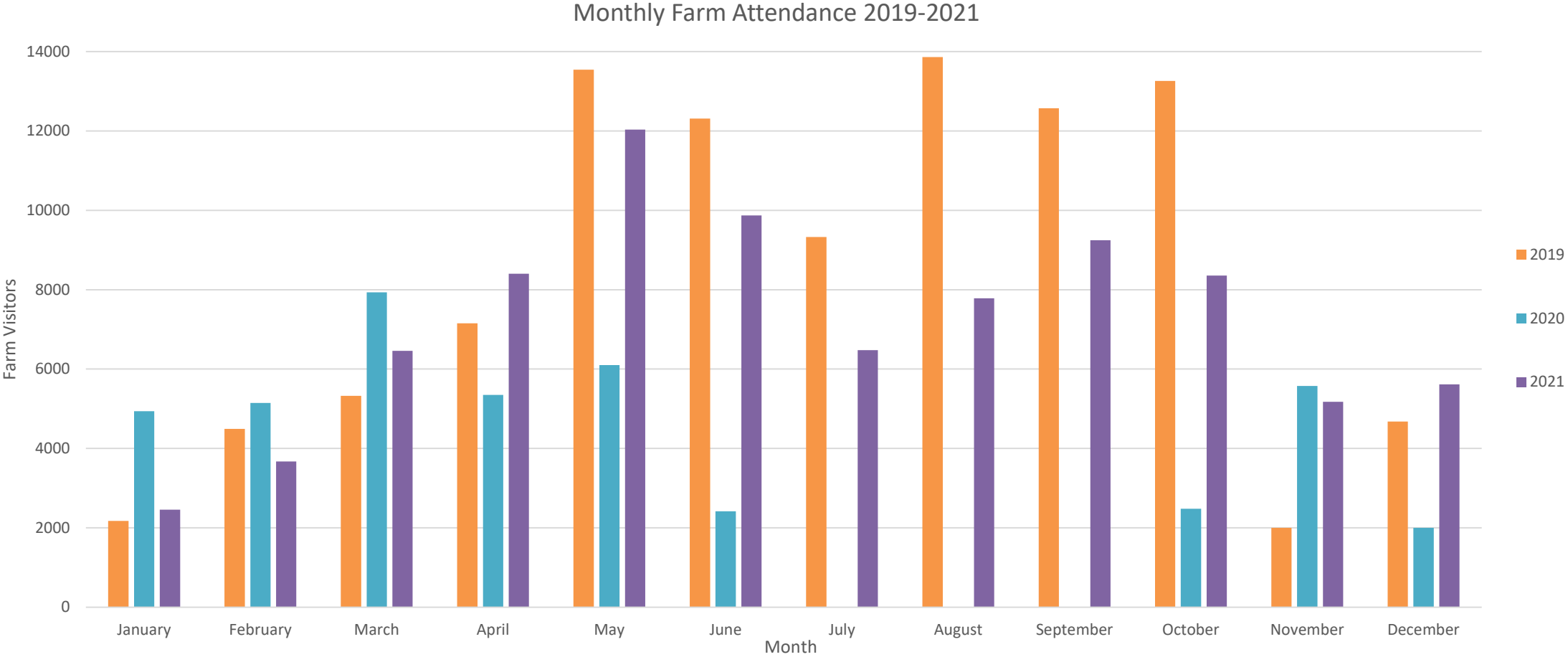
Maplewood Farm Volunteer Program

- Student work experience opportunities with various schools in North and West Vancouver
- Post Secondary Students Pre-vet
- Assisted Volunteer Program with Developmental Disabilities Administration (DDA)





Farm Patron Attendance



Global Animal Care Standards:

Animal Five Freedoms

- Freedom from thirst
- Freedom from hunger
- Freedom from discomfort, pain, injury or disease
- Freedom from fear or distress
- Freedom to express their normal behaviors



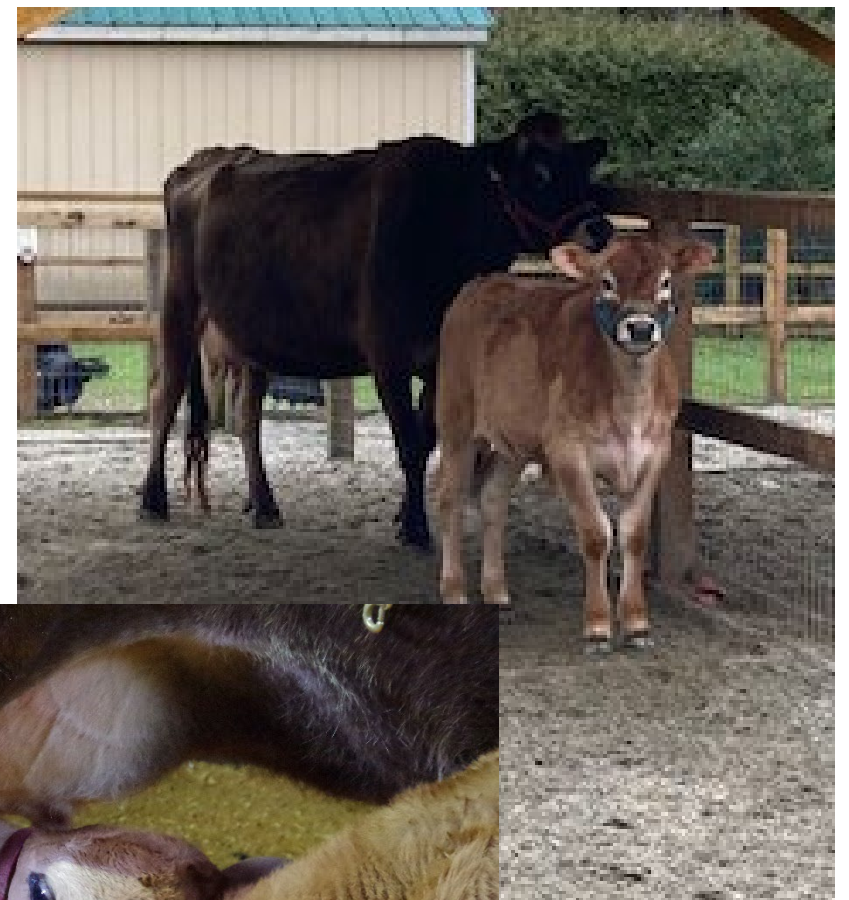
Animal Husbandry

- Proper food and shelter
- Animal management
- Public and animal safety
- Animal enrichment, grooming and training
- Disease and sickness prevention



Animal Welfare Practices

- Developing partnership with BC SPCA Farm
- Working towards gold standard of farm animal care
- Example: Animal rest areas
- Example: Dairy Cow Udder Net



Animal Enrichment

- New enrichment program
- Aimed to stimulate the senses
- Provide animals with a sense of choice and control over their environment
- Allow for play and engagement
- Educational opportunities and public outreach





Recent Farm Enhancements

- Addition of cameras to highly trafficked areas of the Farm
- Repairs to program/amenity room
- Enhancement of animal rest areas
- Installation of fire suppression system in livestock barn





Community Outreach

- Partnership with North Vancouver Salvation Army Food Services
- Partnership with Save On Foods North Vancouver
- Relationship with Kenneth Gordon School & Thrive Family Centre
- Community Garden

save
on
foods





Future of Maplewood Farm

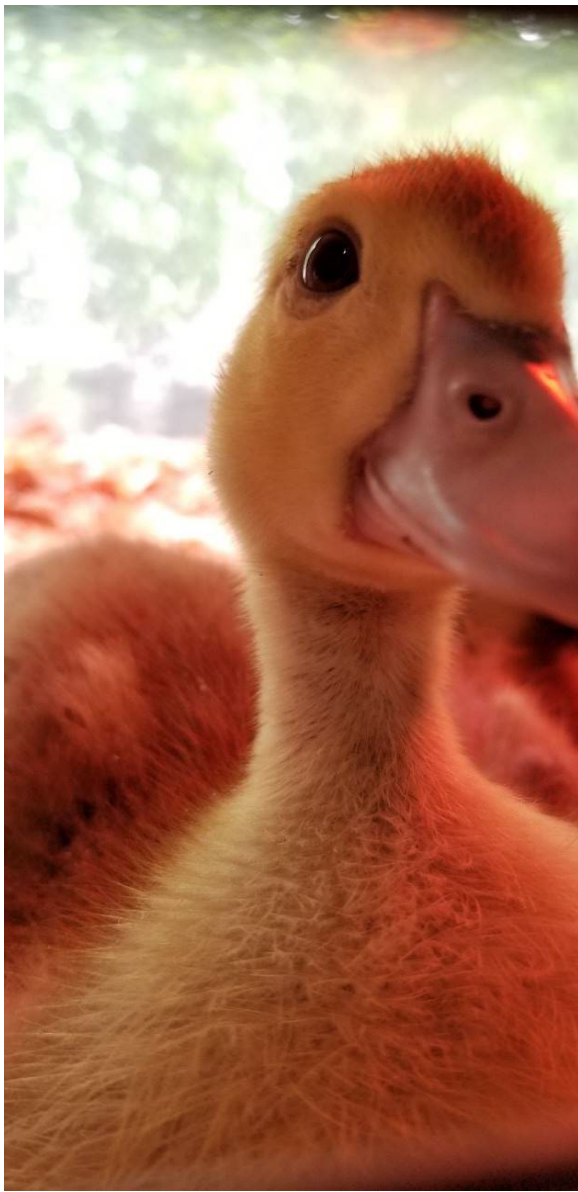
- Children's Educational Programs & Summer Camps
- Public Events
- School Programs & Outreach
- Community Engagement
- Sustainable Farming Practices



Visitor Feedback

- “I've noticed a lot of changes around the place lately, and I shared that with your staff today. The **place has been transformed**.”-Maplewood Farm Member, 2021
- “...a great place to take your family, **not many places like this left.**” –Maplewood Farm Visitor, 2021





Questions?

