

DNV Council Workshop:

Parking Management

June 22, 2020

Agenda

- On-Street Parking Management Policy (10 min)
- Discussion (30 min)
- Lynn Canyon Park Pay Parking Pilot (10 min)
- Discussion (30 min)

On-Street Parking Management



DNV On-Street Parking Regulations



Principals of Parking Policy

Parking Management Goals

- Improve liveability
- Maintain access to public spaces
- Promote economic activity
- Sustainable transportation
- Town centre development
- Demand management

Regulatory Tools

- Resident Parking Only
- Time Restriction with/without Resident Exemption
- Pay Parking

Indicators for Decision-making

- Peak parking demand
- Parking duration

Parking Management Goals

Improve Livability

Maintain Access to
Public Space

Promote Economic
Activity

Encourage Sustainable
Transportation

Support Town Centre
Development

Manage Demand of
Parks & Tourist Sites

Considerations for Parking Regulatory Tools

Residential Parking Only (RPO)

Zoning and current land uses

Parking Demand

Community input

Nearby schools, new developments, or public parks

Potential impacts to adjacent streets

Pay Parking and/or Time Restricted with/without Resident Exemption (RE)

Town and Village Centres

Access to public parks, recreational facilities, and open space

High-density residential buildings

Access to businesses

Key Indicators for Decision Making

Resident Parking Only (RPO) and Resident Exempt (RE)

- Collector and local roads eligible
- Petition demonstrates 2/3 support
- Parking shortfall confirmed
- Judgement reserved for exceptional cases

On-Street Parking Policy Recommendation

THAT Council endorse the
On-Street Parking Policy
Updated March 19, 2020



District of North Vancouver On-Street Parking Policy

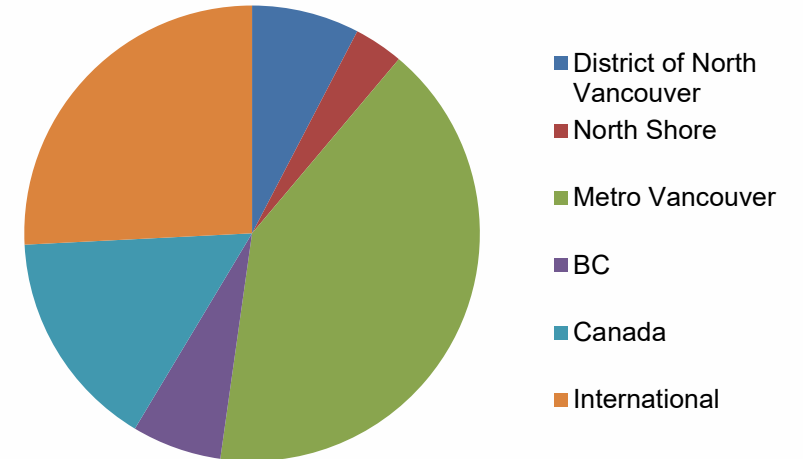
Updated March 19, 2020

Document: 4250142

Lynn Canyon Pay Parking Pilot Project



25% International
25% BC & Canada
30% Metro Vancouver
20% North Shore



Lynn Canyon Pay Parking Pilot

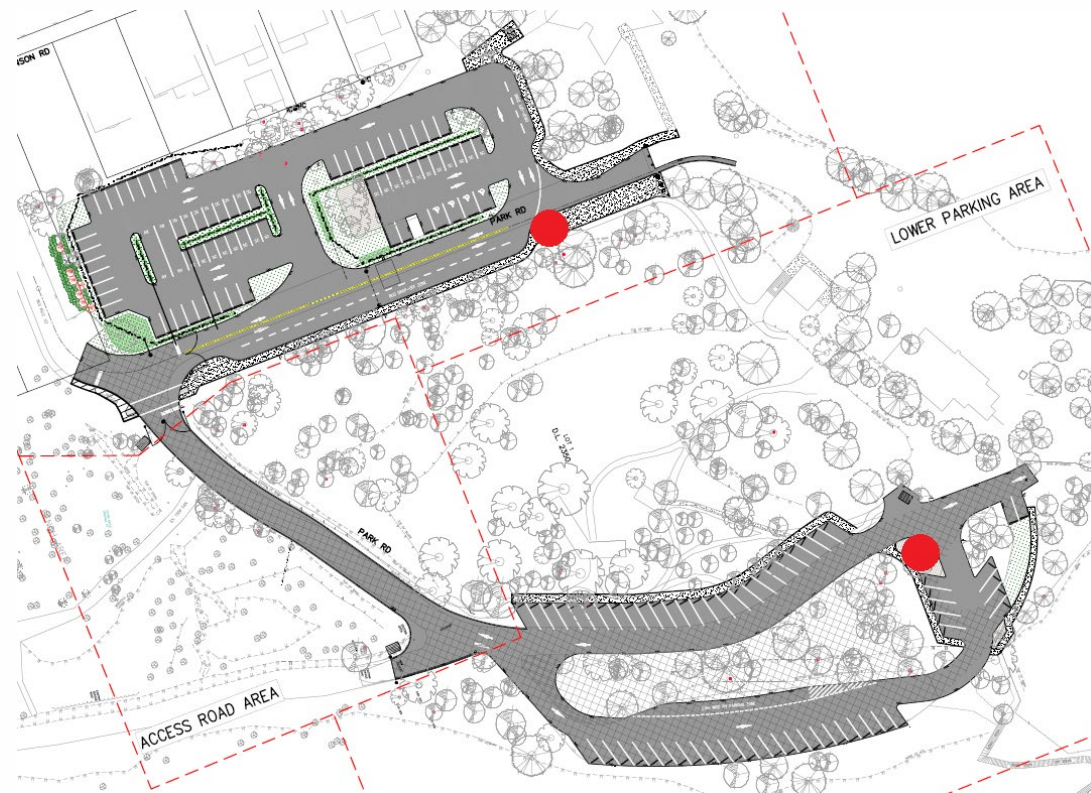


Pay Parking Pilot Financials

- Total cost to implement pay parking infrastructure: \$280K
- Parking revenue forecast \$500K to \$900K
- Recommendation is to install in 2020 in coordination with Park Upgrades,

Pay Parking Pilot Next Steps

- Communications and public engagement
- Installation of pay parking equipment Data collection and analysis
- Fee collection starting spring 2021



Lynn Canyon Park Pay Parking Pilot Discussion

