



Erosion & Sediment Control (ESC)

Single Family Construction

June 24, 2019

Erosion & Sediment Control (ESC)

1. Staff Introductions

- Erika Nassichuk, R.P.Bio
- Richard Boase, P.Geo.

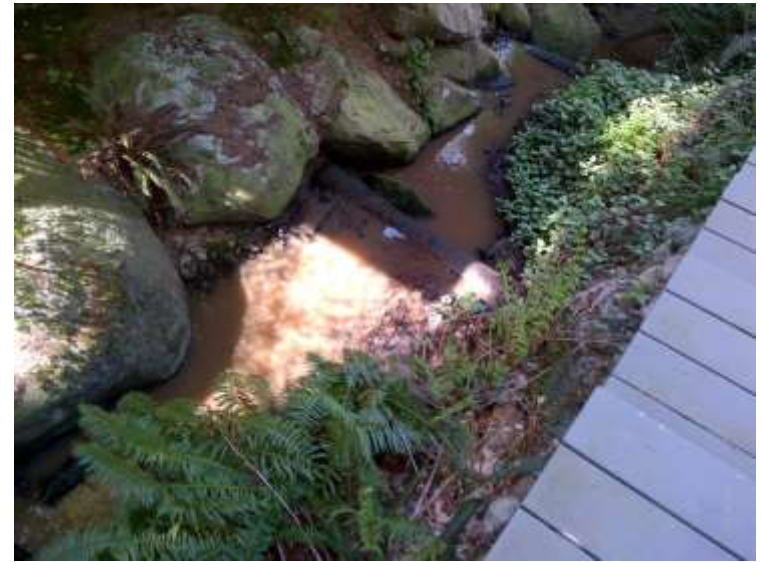
2. ESC Background in the DNV

3. Current ESC Practice – Single Family Lots

4. Recommendations Discussion

Erosion & Sediment Control (ESC)

ESC Background in the DNV



Erosion & Sediment Control (ESC)

ESC Background in the DNV

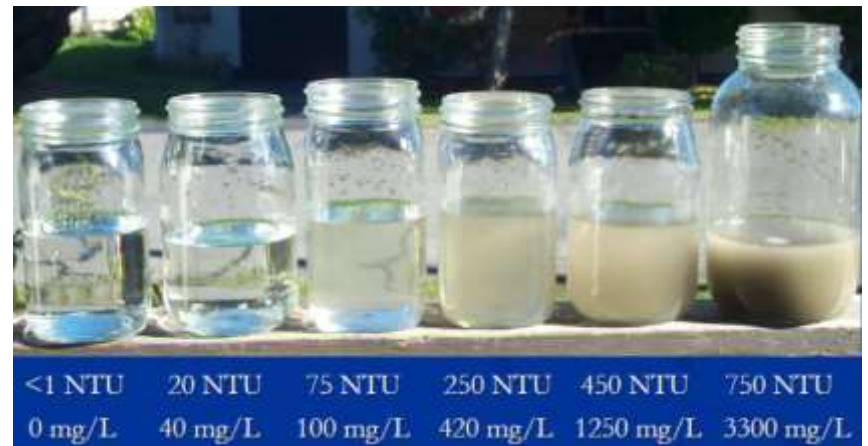
- Environmental Protection & Preservation Bylaw 6515
 - Soil Permits for soil movement in/out parcels
 - TSS threshold criteria for discharge
 - Protection of DNV storm sewer infrastructure

Erosion & Sediment Control (ESC)

ESC Background in the DNV

Environment Bylaw 6515:

- No person may do anything that would, directly or indirectly, foul, obstruct or impede a *stream, or waterfront*



Erosion & Sediment Control (ESC)

ESC Background in the DNV

- Streamside Protection Development Permit Area
- Additional Development Permit Areas
 - Natural Environment
 - Streamside Protection
 - Creek Hazard
 - Slope Hazard
 - Wildfire Protection

Erosion & Sediment Control (ESC)

ESC Background in the DNV

- Introduced and defined "*development*"
- Any construction or alteration of a building on land inside a DPA required a review to determine compliance with the guidelines
- Any alteration of land including site clearing, vegetation removal, landscaping work etc. required a review to determine compliance with the guidelines

Erosion & Sediment Control (ESC)

ESC Background in the DNV

Construction Bylaw 8271:

- 'Failure to manage sediment or erosion'
- 'Failure to ensure catch basin fitted with sediment trap'



Erosion & Sediment Control (ESC)

ESC Background in the DNV

- The DNV is the one of the only municipalities in the region to have ESC requirements for single family infill development
- Surrey and Coquitlam have substantial ESC programs that require monitoring, sampling and strict enforcement . The DNV has the same type of requirements for similar larger projects
- These programs are only required for greenfield development, not single family infill or redevelopment

Erosion & Sediment Control (ESC)

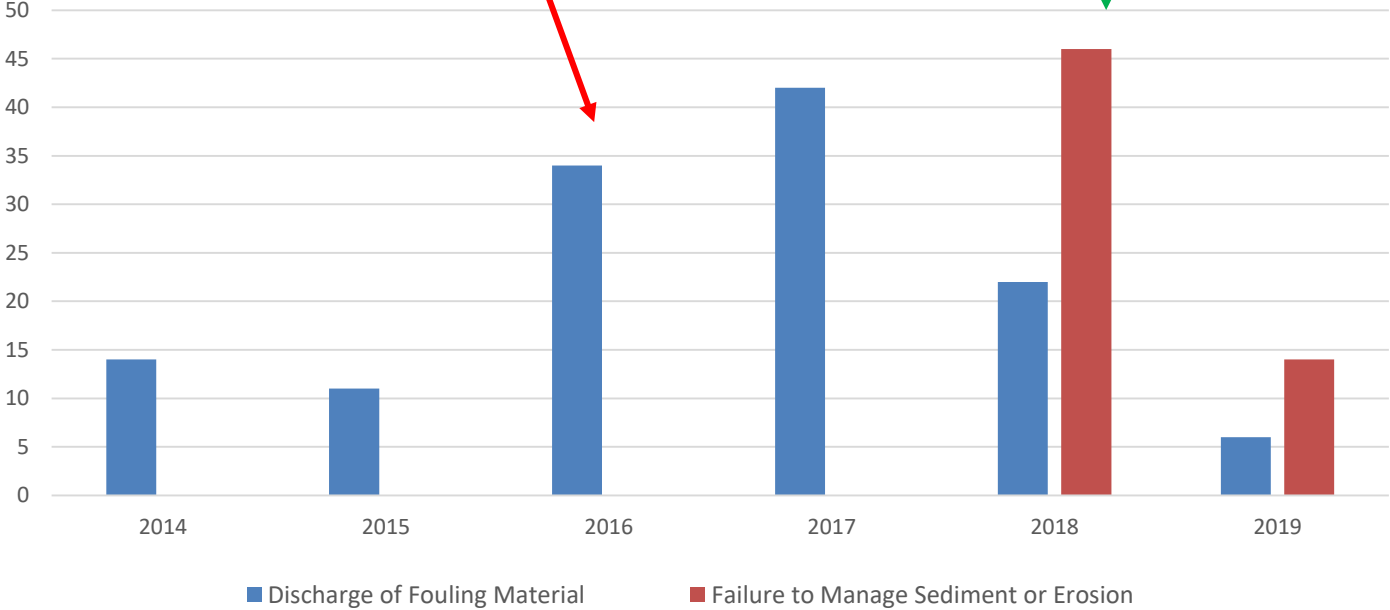
Current ESC Practice – Single Family Lots

- Environment, Construction & Sewer Bylaws
- ENERGOV
- Mandatory ESC Inspection within BLD cases
- Future performance management of contractors

Erosion & Sediment Control (ESC)

Environment staff member increase

New Construction Bylaw implemented
December 2017

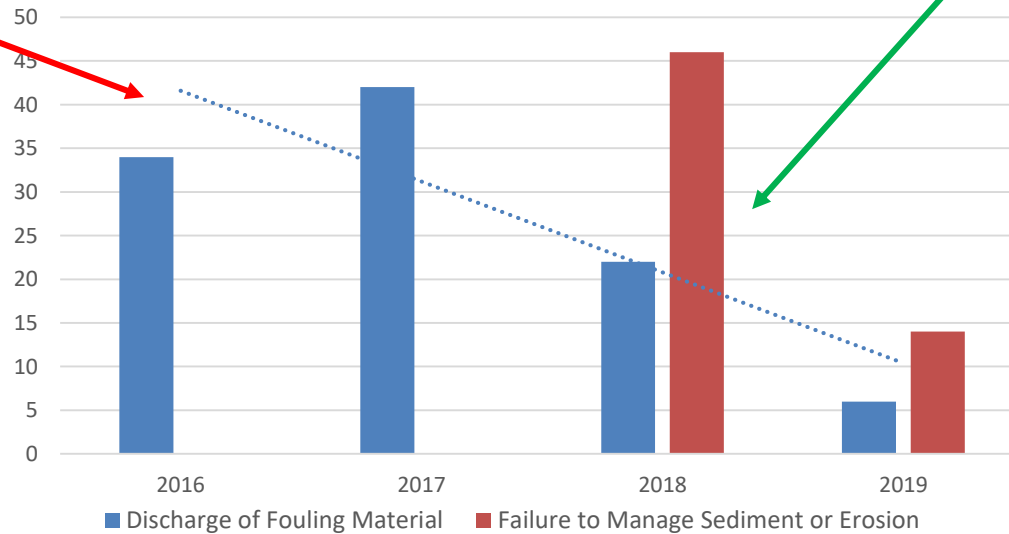


Erosion & Sediment Control (ESC)

Current ESC Practice

New Environment staff

New Construction Bylaw
December 2017



Erosion & Sediment Control (ESC)

Energov

- Mandatory ESC inspections for all building projects with associated soil permits
- An ESC inspection fail means all further inspections are stopped until the ESC inspection is a pass

- Security deposits are taken on building permits



Single Family Construction

Recommendations Discussion

- Energov Contractor ESC Performance Ratings
- Education/Outreach
- ESC Wet Weather forecast
- Bylaw Updates
 - NTU measure vs TSS
 - Increase fines for discharge of fouling material

Questions