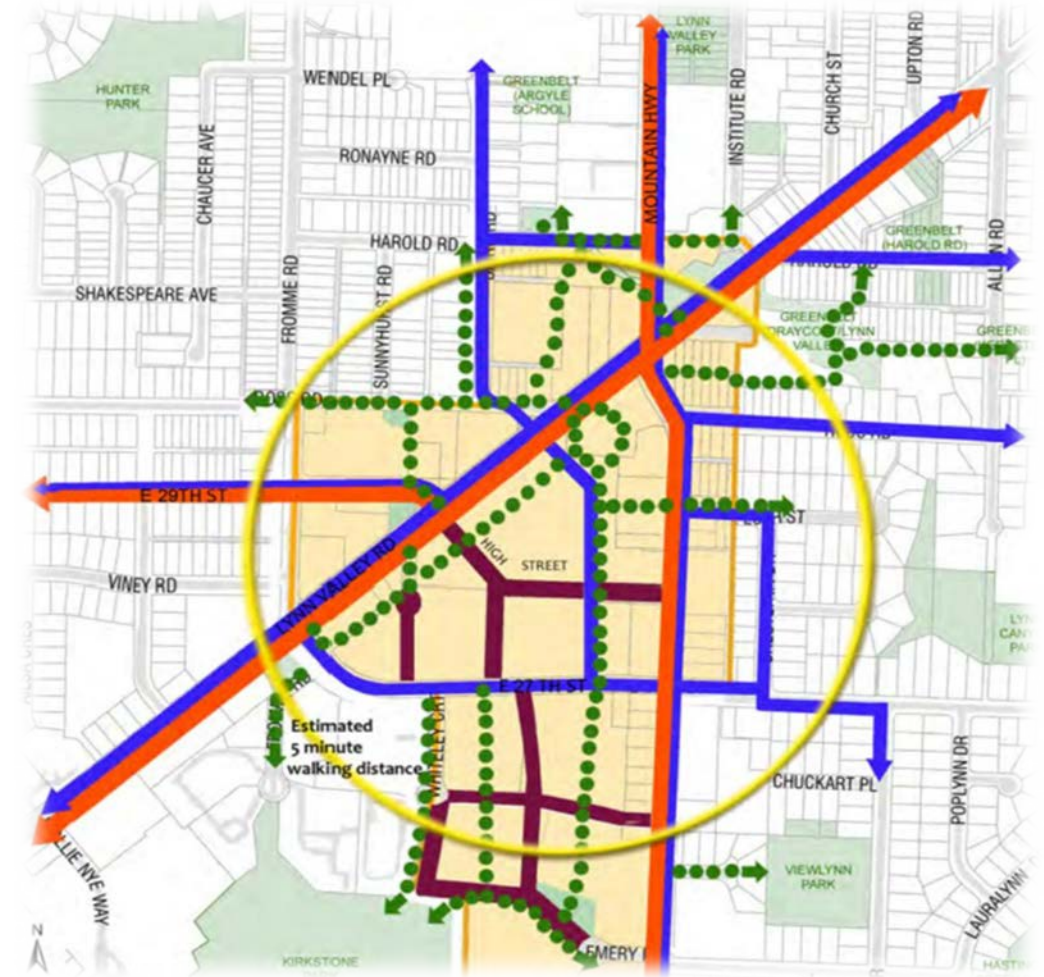
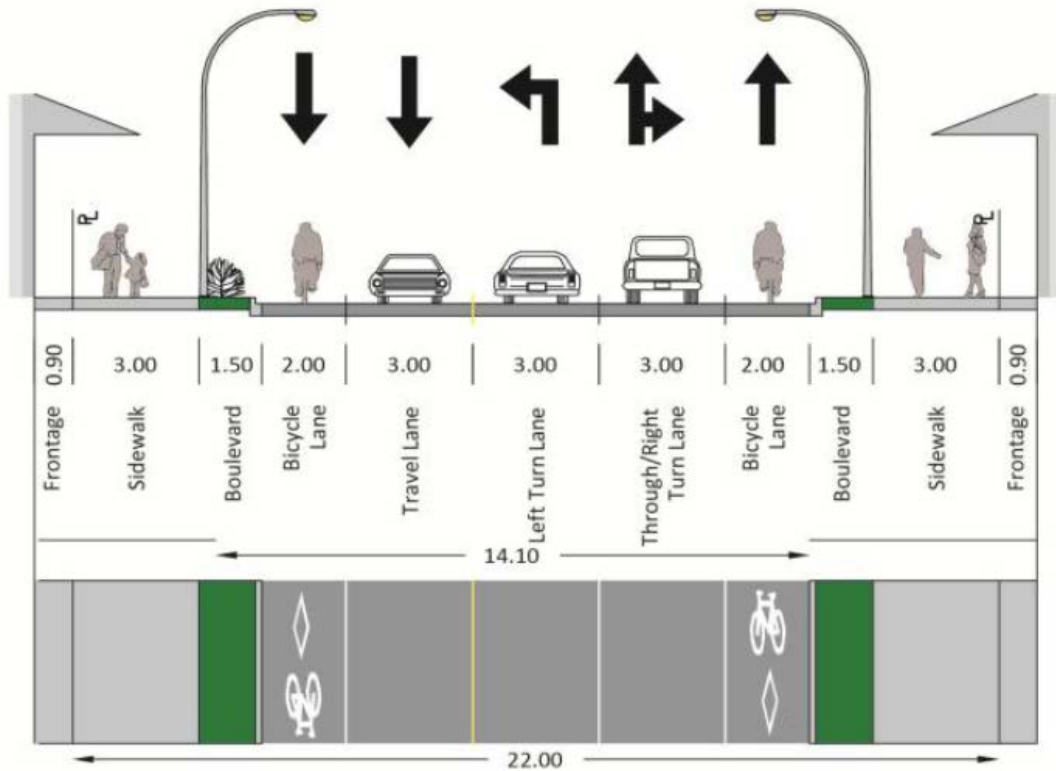




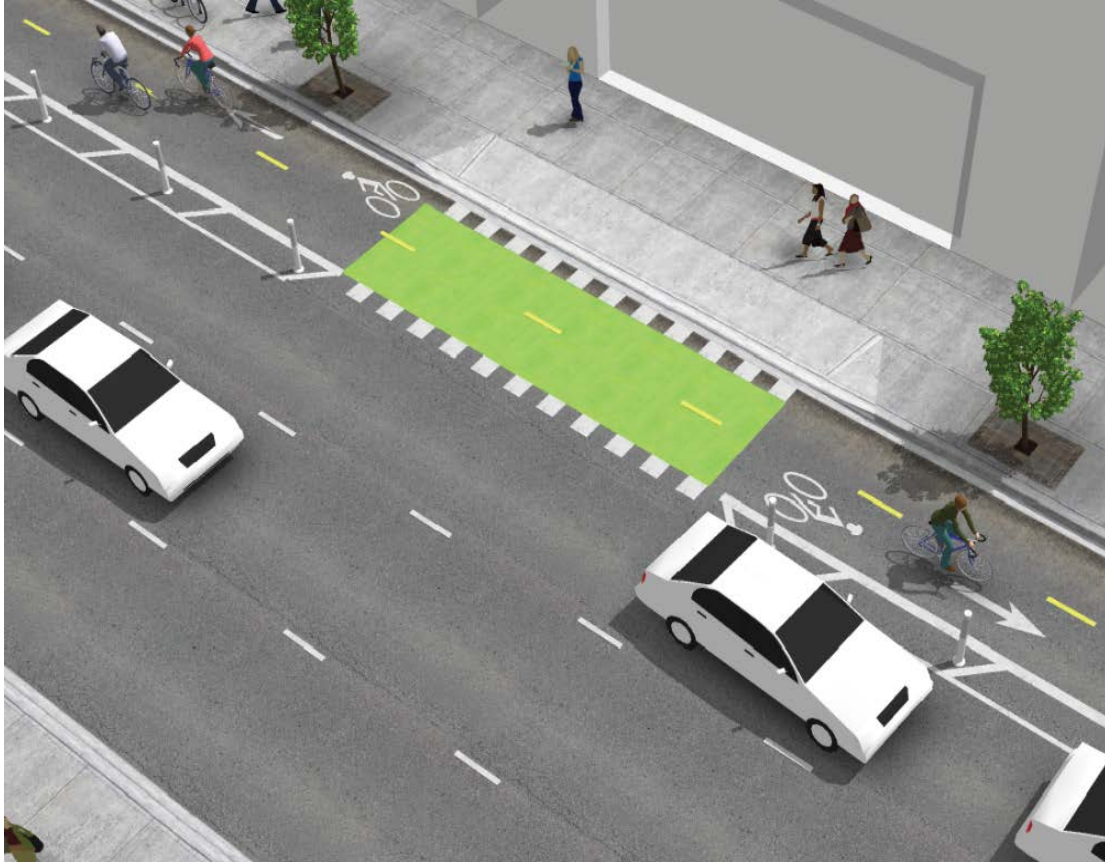
East 29th Street Safety and Mobility Improvements

May 27, 2019

Compatibility with Lynn Valley Town Centre



Urban Bikeway Design

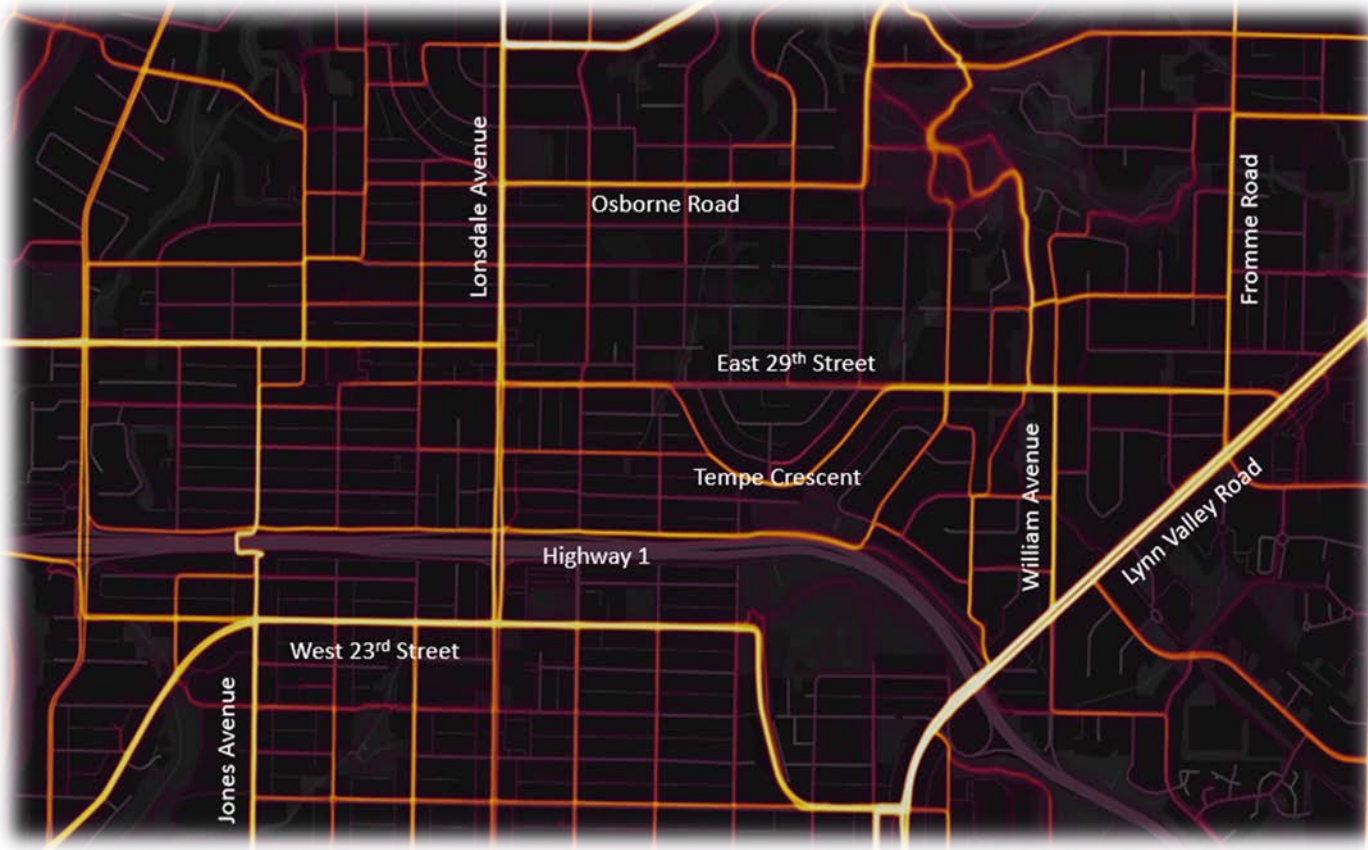


Two-Way Cycle Track



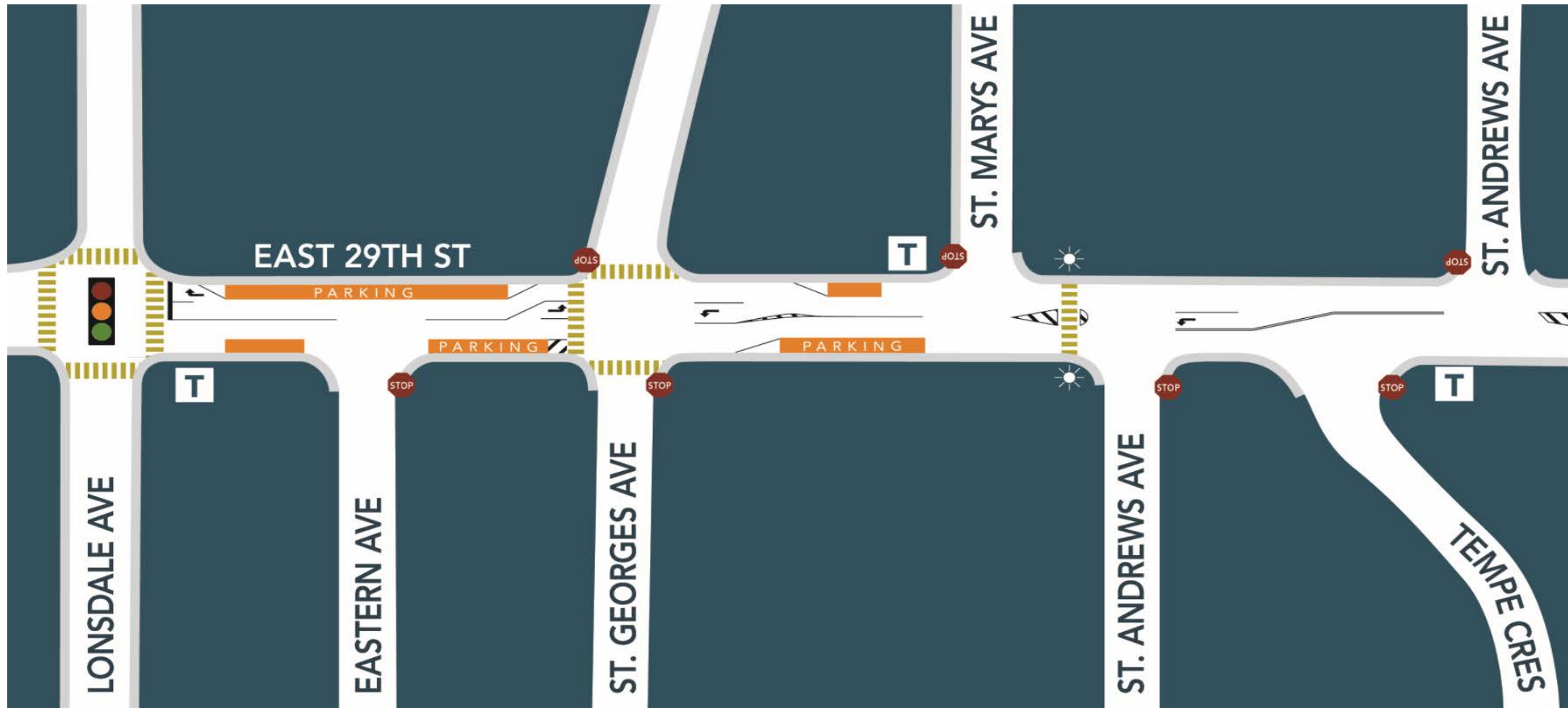
One-Way Buffered Bike Lane

East 29th Street Corridor Planning Study

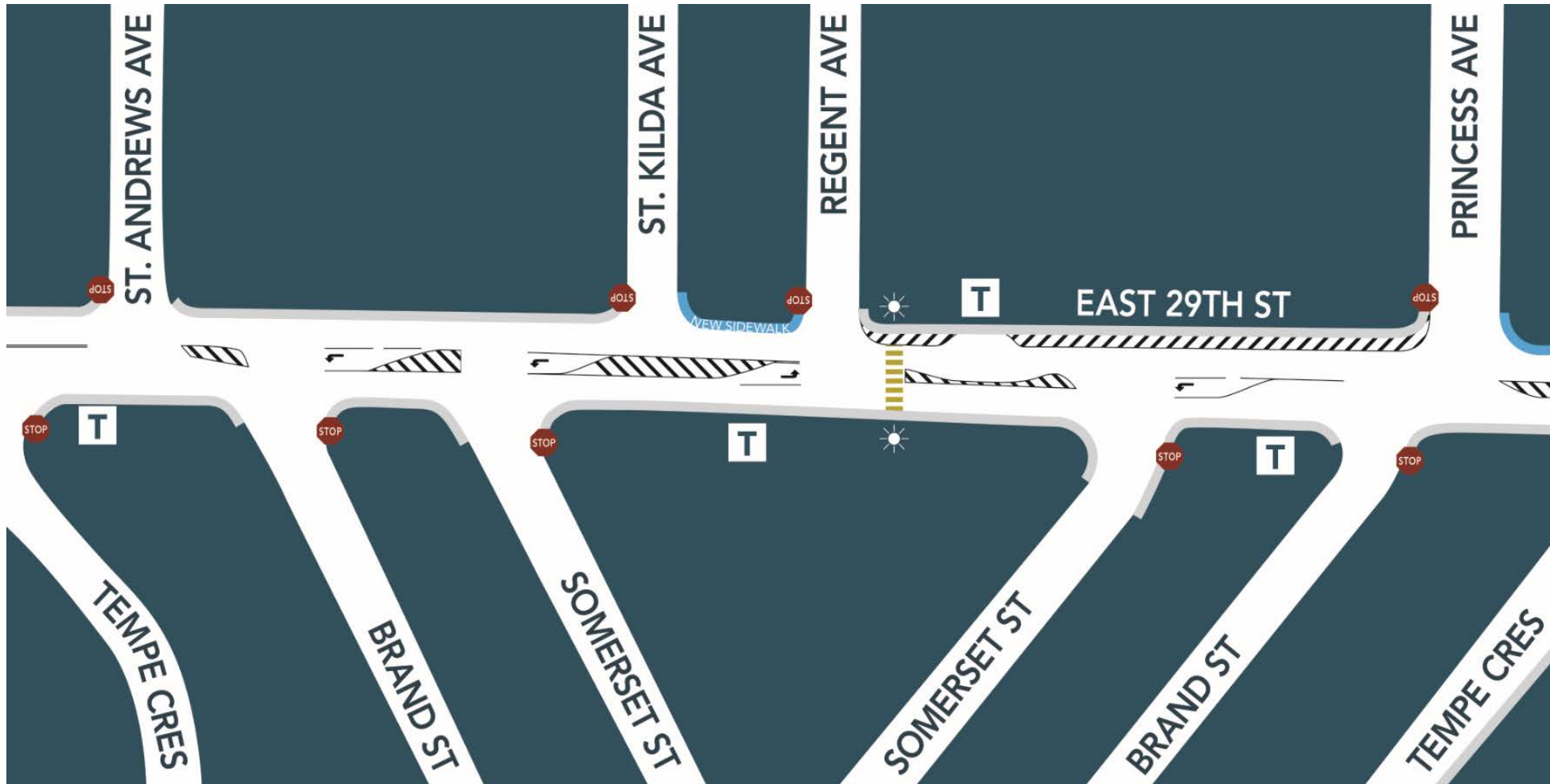


- Sustainable transportation
- Multi-modal
- Improve pedestrian connectivity
- Reduce east-west vehicle delays
- Prioritize road space for the movement of people
- Improve safety for all users
- Holistic approach to design and implementation
- Close collaboration with CNV
- Extensive public consultation, HUB, Coast Mountain Bus Company

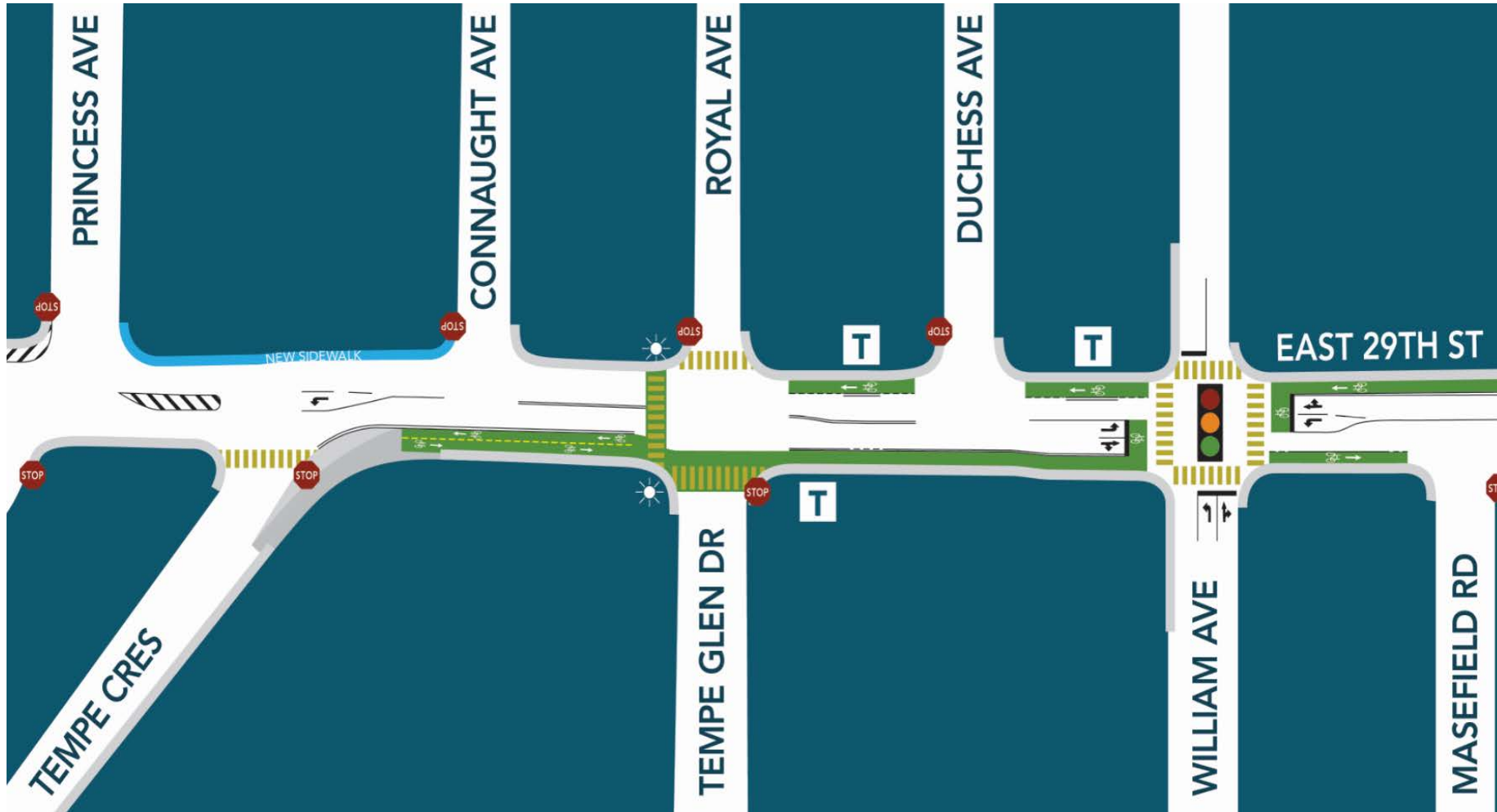
East 29th St Segment A: Lonsdale Ave to Tempe Cres



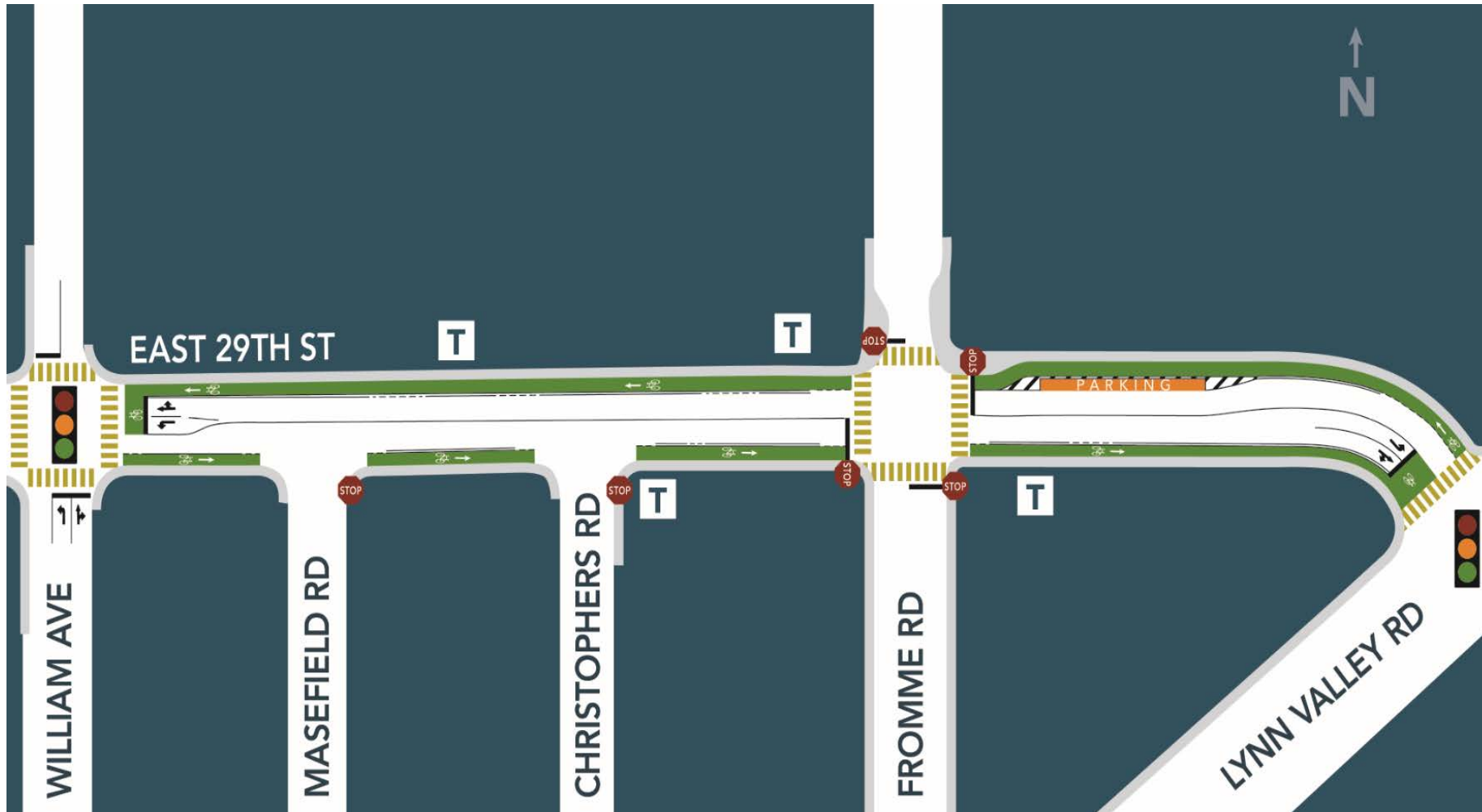
East 29th St Segment B: Tempe Cres (west) to Tempe Cres (east)



East 29th St Segment C: Tempe Cres to William Ave



East 29th St Segment D: William Ave to Lynn Valley Rd



Resolution

THAT \$972,000 additional funding for East 29th Safety & Mobility Improvements is approved

AND THAT the 2019 – 2023 Financial Plan be amended prior to year-end to reflect the project