

# Maplewood Fire Rescue Centre

April 15, 2019



# Maplewood Fire Rescue Centre





# Facilities at end of life



# Facilities at end of life

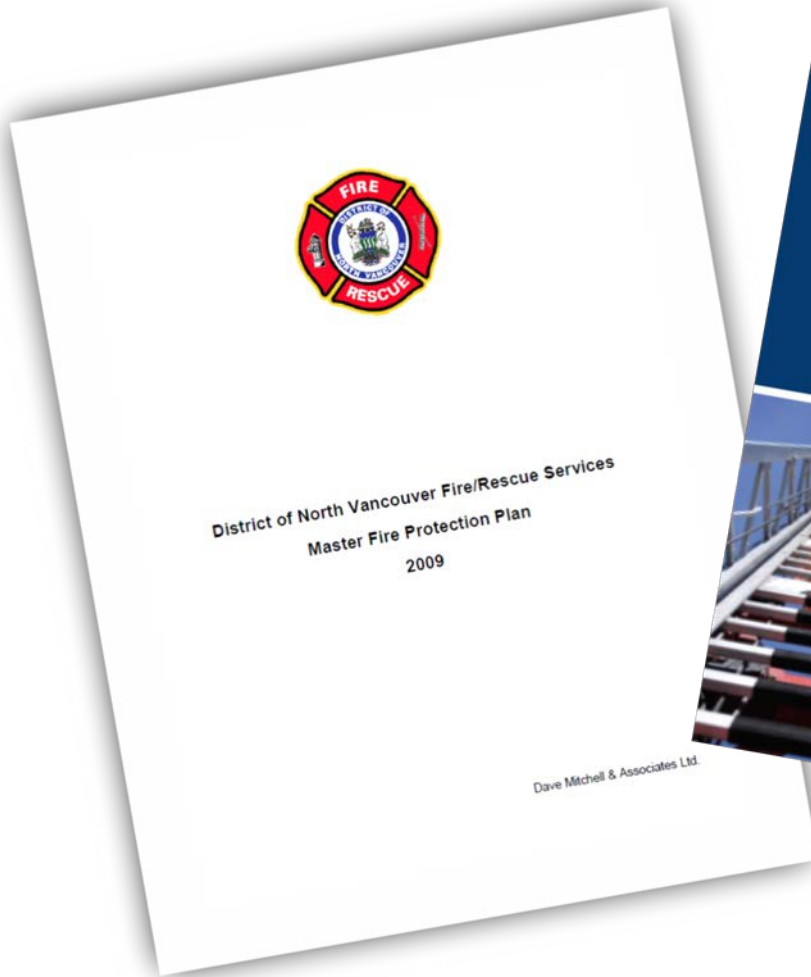




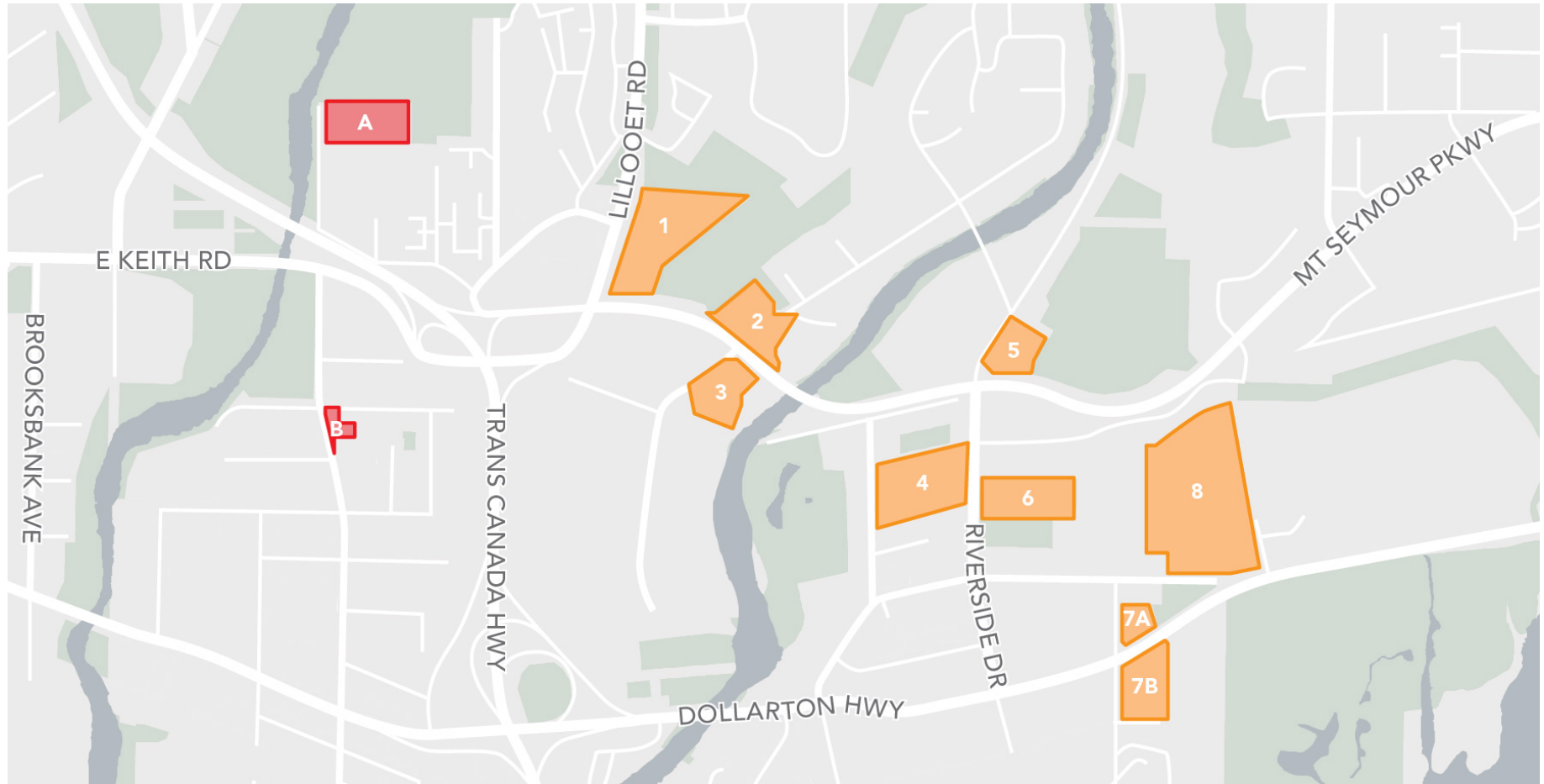
# Facilities at end of life



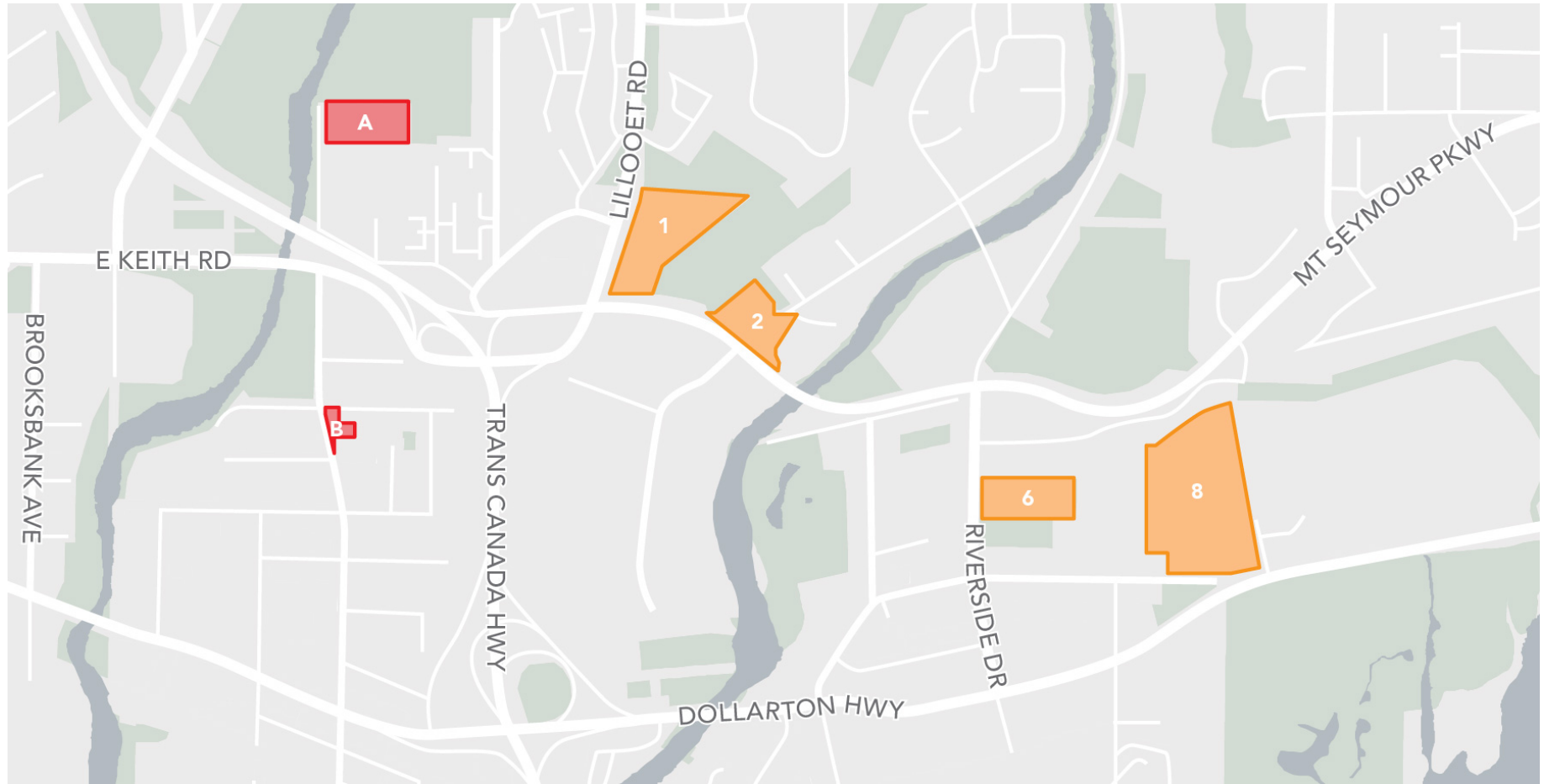
# Research & Investigation



# Multiple Sites Analyzed

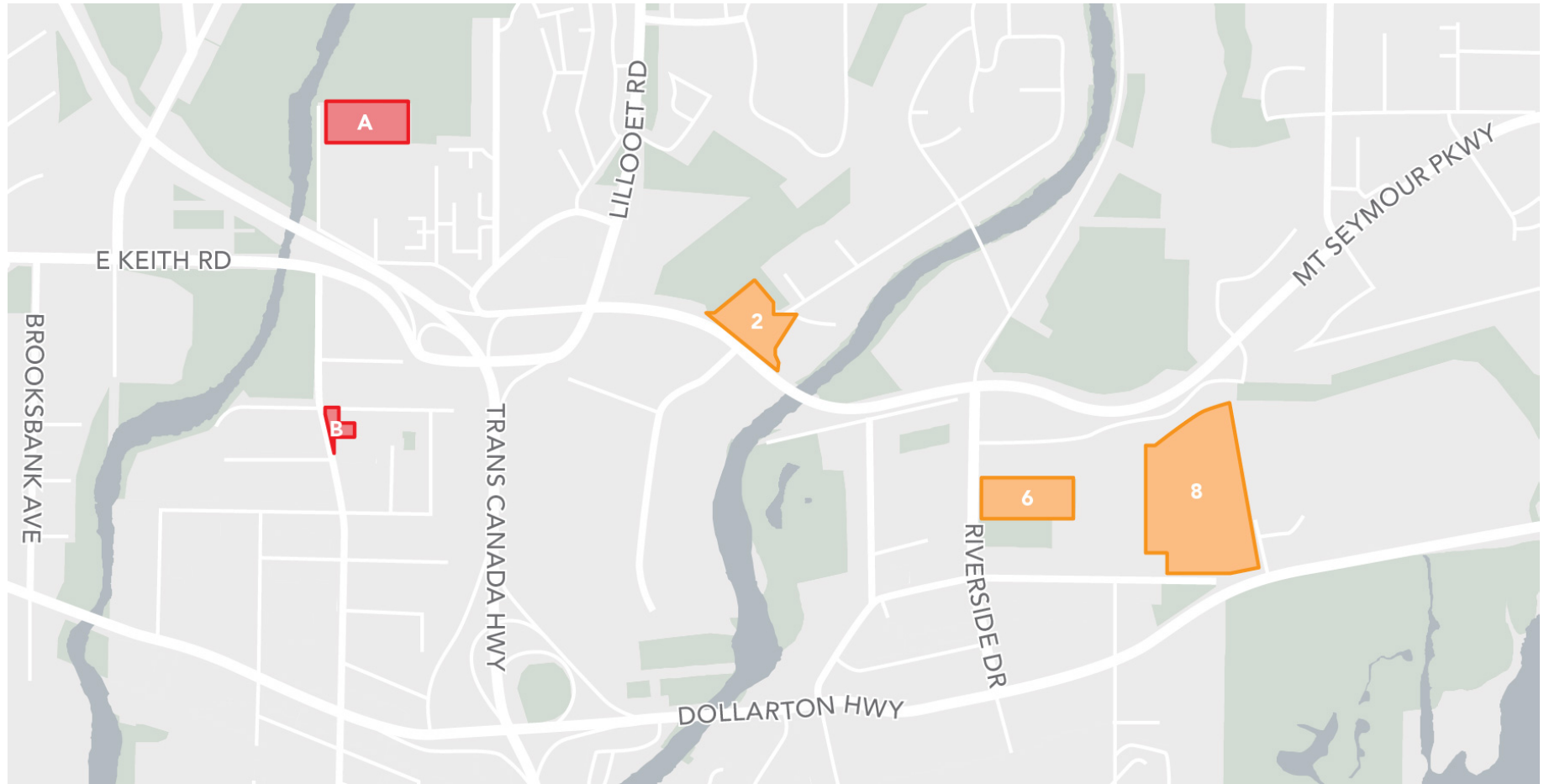


# 4 Sites Shortlisted

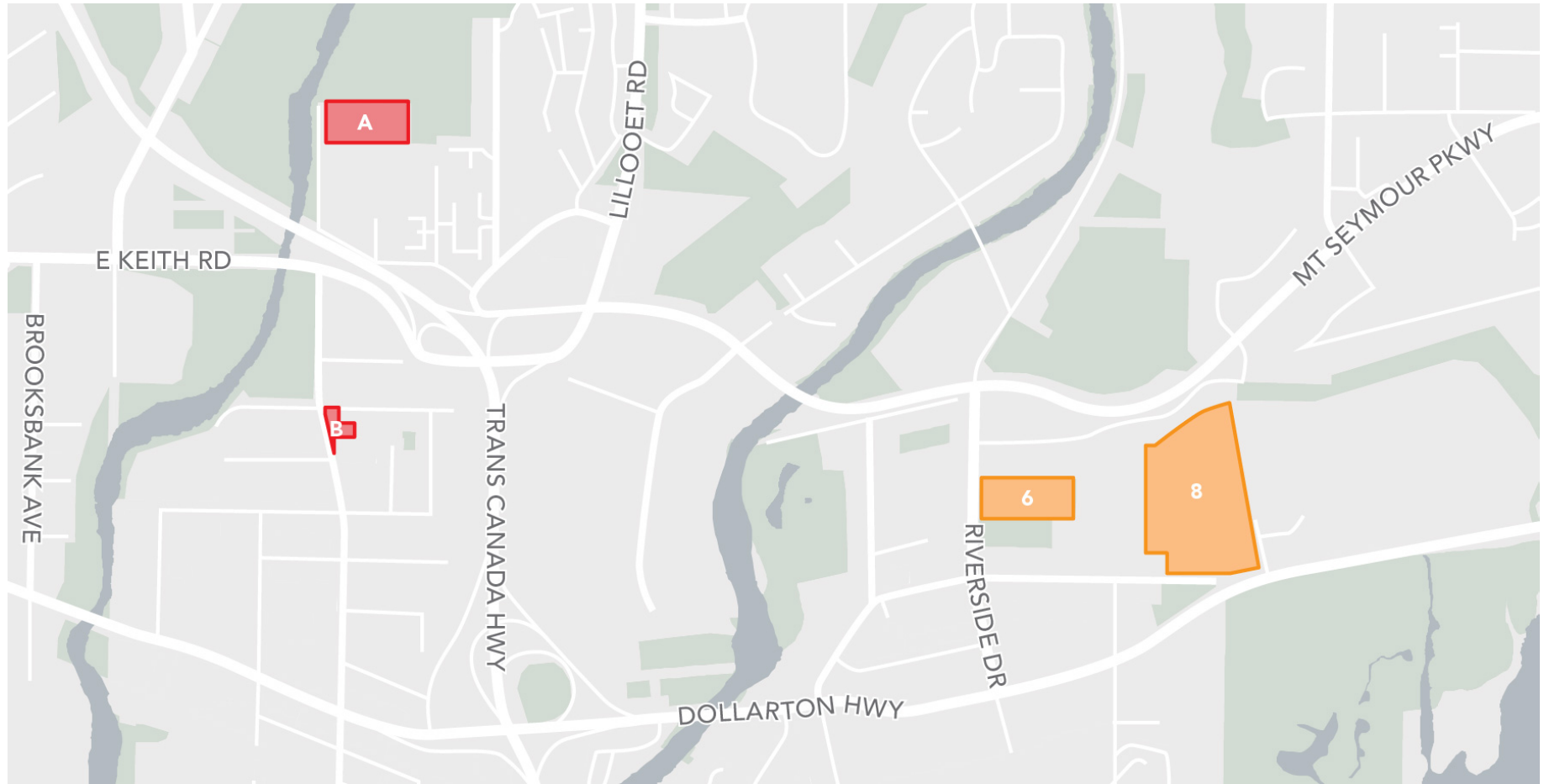




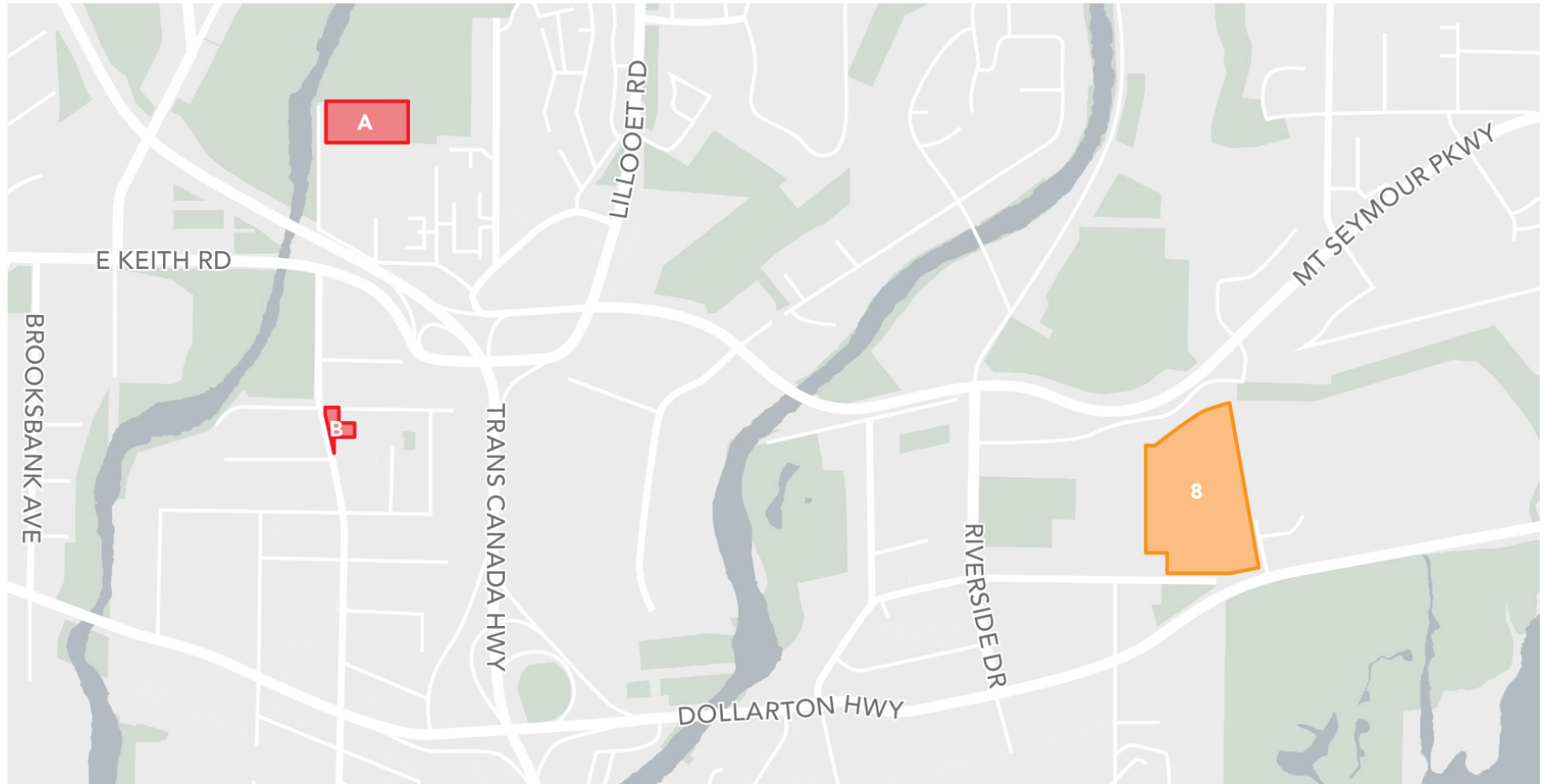
# Site Analysis



# Site Analysis



# Site #8 - MAPLEWOOD





# MAPLEWOOD - 1970



# MAPLEWOOD - 1992



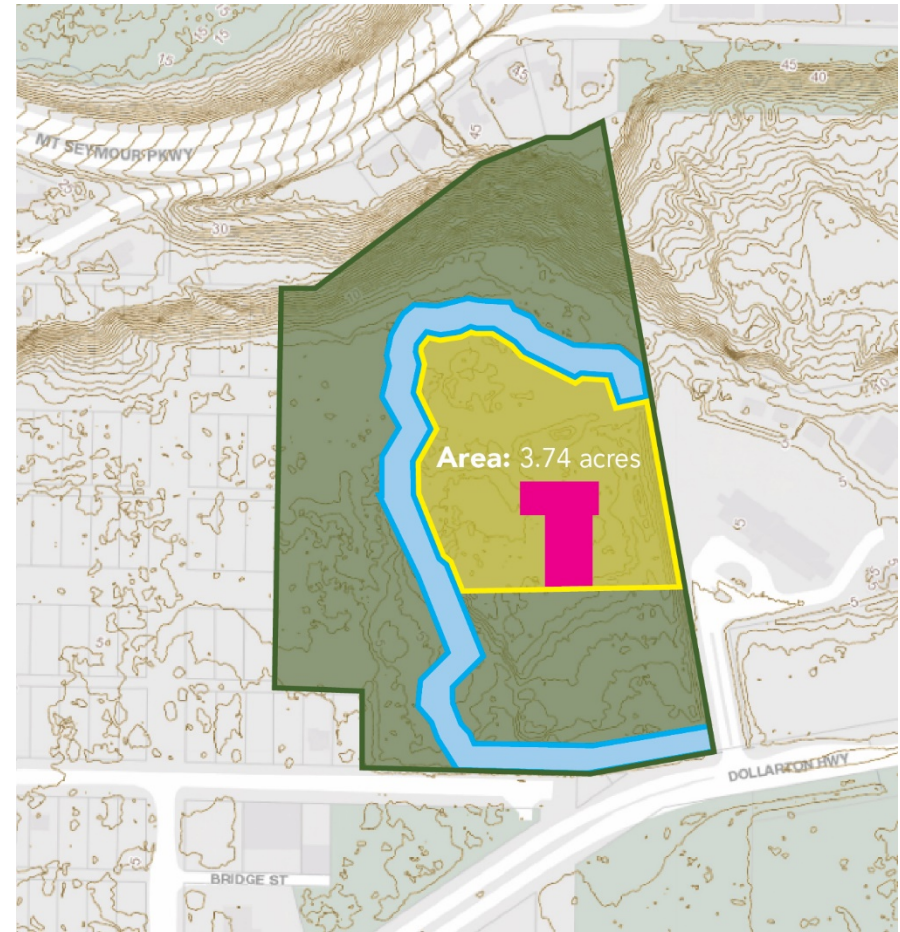
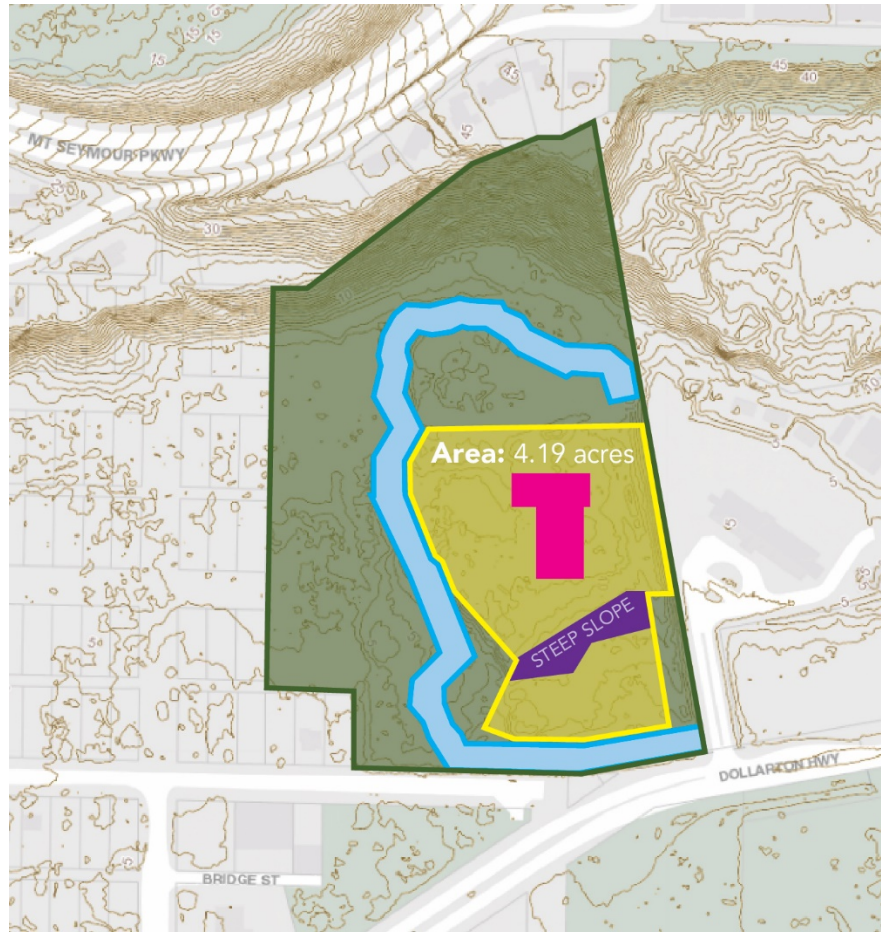


# MAPLEWOOD





# Location on Site



# WHERE WE ARE

- \$34 million in 5 Year Capital Plan
- \$1.6 spent to date
- 75% completion of detailed design
- We know that this site offers
  - best service model
  - organizational efficiencies
  - health & safety
  - reduced environmental impact



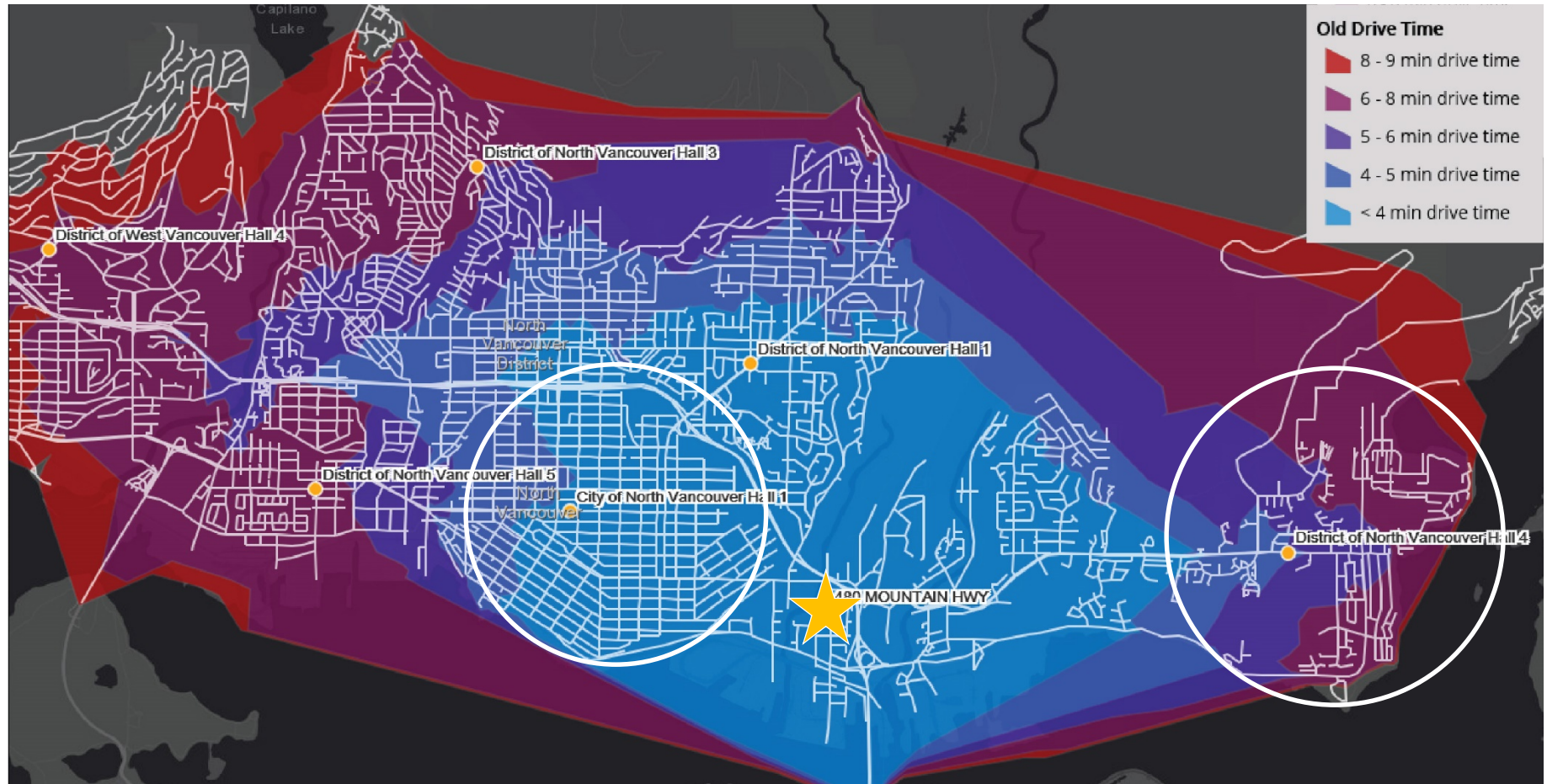
# IMPROVED SERVICE



DISTRICT OF  
**NORTH  
VANCOUVER**



# Response Time – Current Station #2

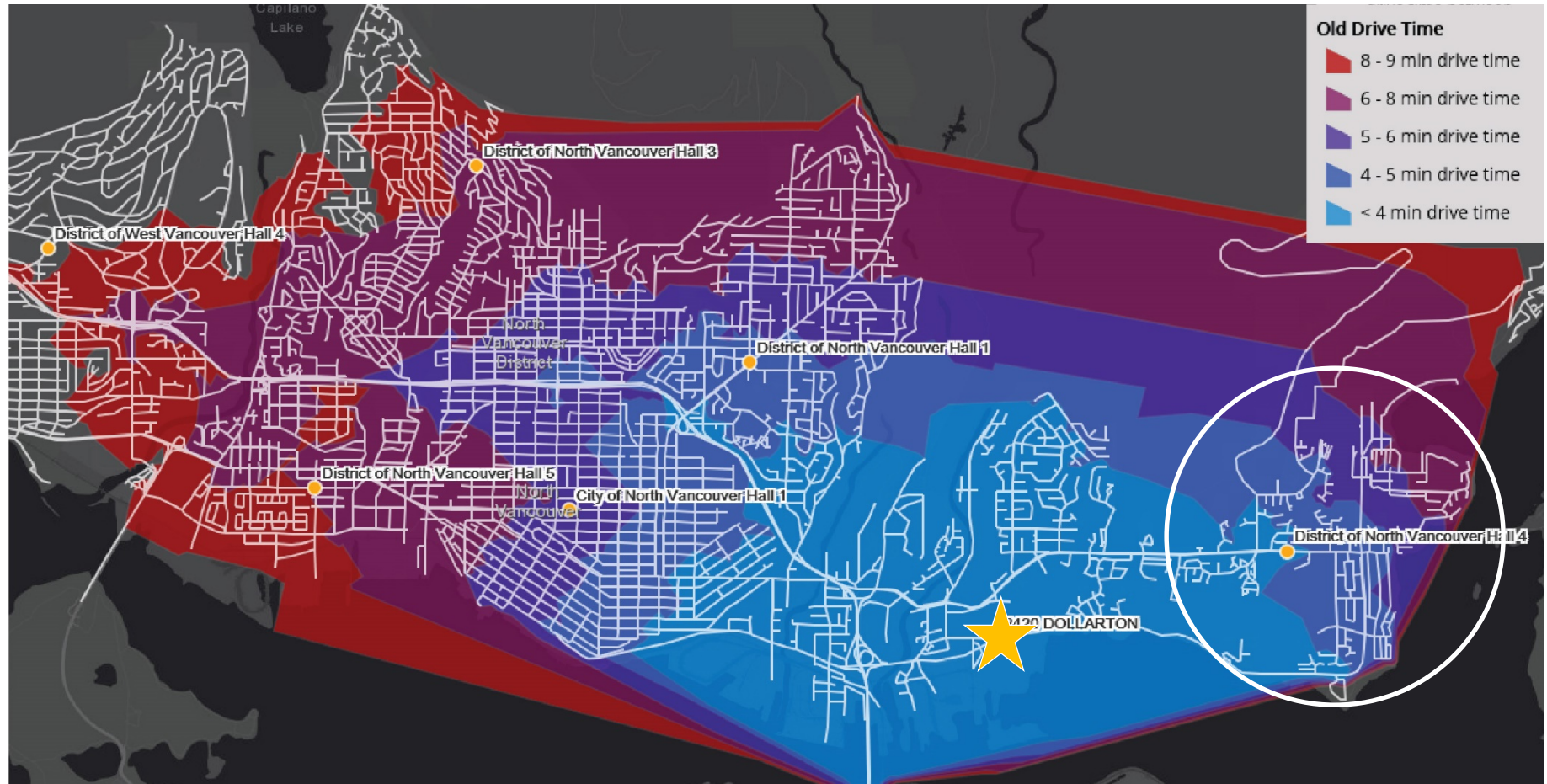


# Current Model





# Response Time – Maplewood

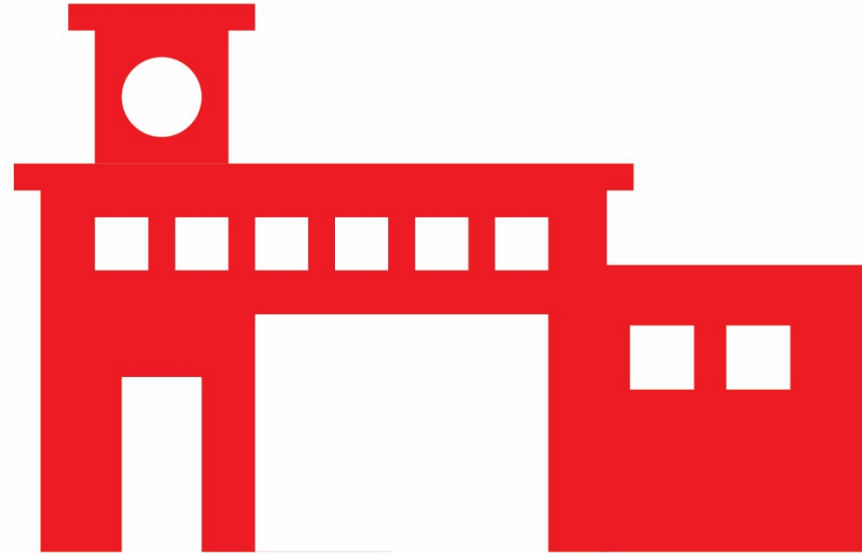




# Training/HQ/Admin Co-located



# Better use of on-shift staff



## COMBINED FIREHALL/TRAINING CENTRE





# Workplace Health & Safety





# Gender Neutral Facilities





# REDUCED ENVIRONMENTAL IMPACT





# LONG TERM BENEFITS

