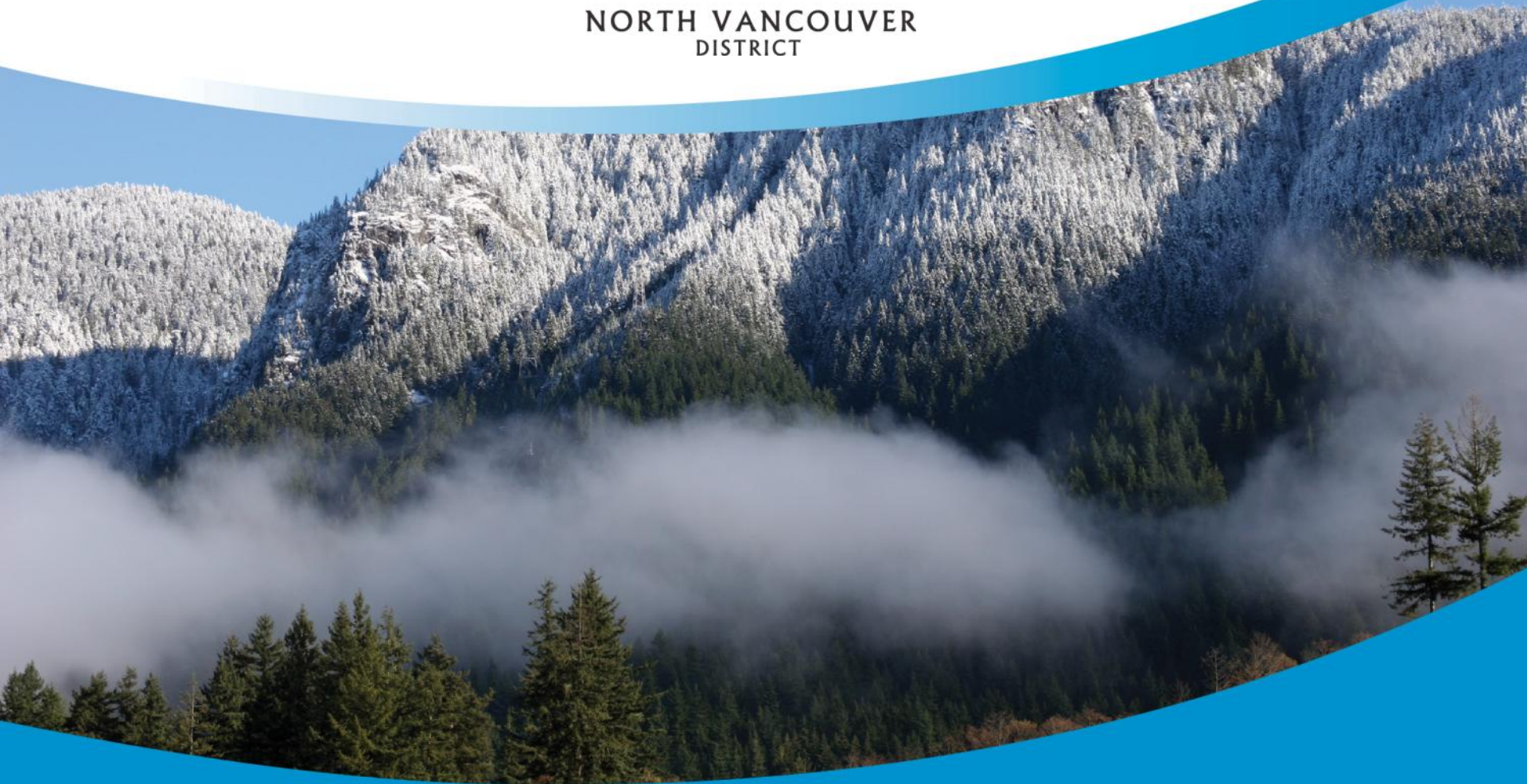




NORTH VANCOUVER
DISTRICT



Agenda – “Trees In the District”

Tree Policy Amendments

October 3, 2017

- ☐ **DNV Tree Policy and Background**
 - ☐ **Council Request**
 - ☐ **Staff Response**
- ☐ **Emerging Trends / Challenges**
- ☐ **Proposed Amendments to Tree Policy**
- ☐ **Trees and Power Lines**
- ☐ **Proactive Forest Management**

Request from Council

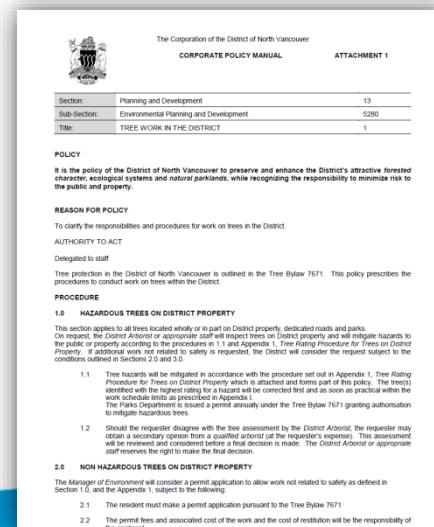
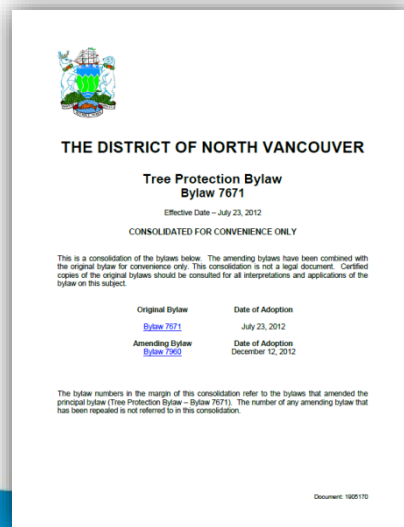
- ☐ **Review Tree Policy and prepare draft recommendations related to:**
 - ☐ Added flexibility / adaptability
 - ☐ Unopened roadways, greenbelt and interface areas
 - ☐ Proactive forest management
 - ☐ Trees in close proximity to Hydro lines

Recommendations

- ☐ **Revised Tree Risk Assessment Process**
- ☐ **Tree Hazard Priority Ratings Updated**
- ☐ **Nuisance Trees / Permits For**
- ☐ **Tree Species / Location Provisions**
- ☐ **Dispute Resolution / Arbitration Process**
- ☐ **Proactive Forest Management**

District Tree Policy and OCP

- ❑ Background / History / OCP / DPA Policy
- ❑ Tree Protection Bylaw # 7671
- ❑ Tree Work in the District Policy
 - ❑ Protect the forested character
 - ❑ Management of District trees
 - ❑ Reduce risk to public and property



Trees on District Property

- ☐ DNV is responsible for approximately 3 million trees within its urban forest
- ☐ Which trees are protected?
- ☐ Where are District trees located?
 - ☐ Parks, greenbelts, alpine areas, lane & street ROW's
- ☐ Which trees generate the most requests for service?
- ☐ How does the District manage trees on public property?



Emerging Trends & Challenges

- ❑ RFS volumes steadily increasing over last 5 years
 - ❑ Requests for views, litter & light on rise
- ❑ Aging and mature forest = potential for blowdown
- ❑ Development pressures impact tree health
 - ❑ Single family homes, densification, town centers
- ❑ Climate change
 - ❑ Increased frequency, intensity and unpredictability of storms
 - ❑ August 2015 storm



Proposed Tree Policy Amendments

- ☐ **Tree risk assessment**
 - ☐ Based on industry standards (TRAQ)
- ☐ **Tree Hazard priority ratings**
 - ☐ Remove borderline rated trees
- ☐ **Nuisance trees / permits**
 - ☐ Reviewed “case by case”
 - ☐ Actionable nuisance
 - ☐ Restitution planting
- ☐ **Tree species / location**
- ☐ **Dispute resolution / arbitration**

Added Flexibility and Adaptability

Tree Risk Assessment and Hazard Priority Ratings

- ❑ Now in line with TRAQ industry standards
- ❑ Streamlined removal of “borderline” rated trees
- ❑ Considers **species and location**
 - ❑ Alders, Hemlocks and Cottonwoods
 - ❑ Unopened roads, laneways, greenbelts and interface



Nuisance Trees

- ❑ In keeping with CNV policy
 - ❑ *“Requests for removal of otherwise healthy trees which pose an actionable nuisance due to species, size, location or condition, and where all other mitigation efforts have been exhausted, will be considered on a case-by-case basis. If removal is allowed, replacement with trees and/or appropriate vegetation will be required as compensation.”*
- ❑ Provides clear definition of “*actionable nuisance*”
- ❑ Permits will not be unreasonably withheld
- ❑ Reviewed on a “case by case” basis

Dispute Resolution and Arbitration

☐ Current process

- ☐ Resident contests findings of District Arborist
- ☐ Resident retains independent arborist
- ☐ Reports submitted to Community Forester for review, assessment and decision

☐ Amended process

- ☐ Resident first follows steps above, **then...**
- ☐ Resident makes application to Arbitration Panel
 - ☐ All parties present, and after deliberation Panel delivers ***final decision***

Trees and Power Lines

- ☐ Staff meet with BC Hydro on regular basis
 - ☐ Trees near, beneath or in close proximity to wires are sole responsibility of BC Hydro, and
 - ☐ **Exclusively maintained/managed by Hydro** and their qualified contractors
- ☐ DNV staff not “Hydro Line Clearance certified”
- ☐ Requires specialized equipment



Tree Related Insurance Claims

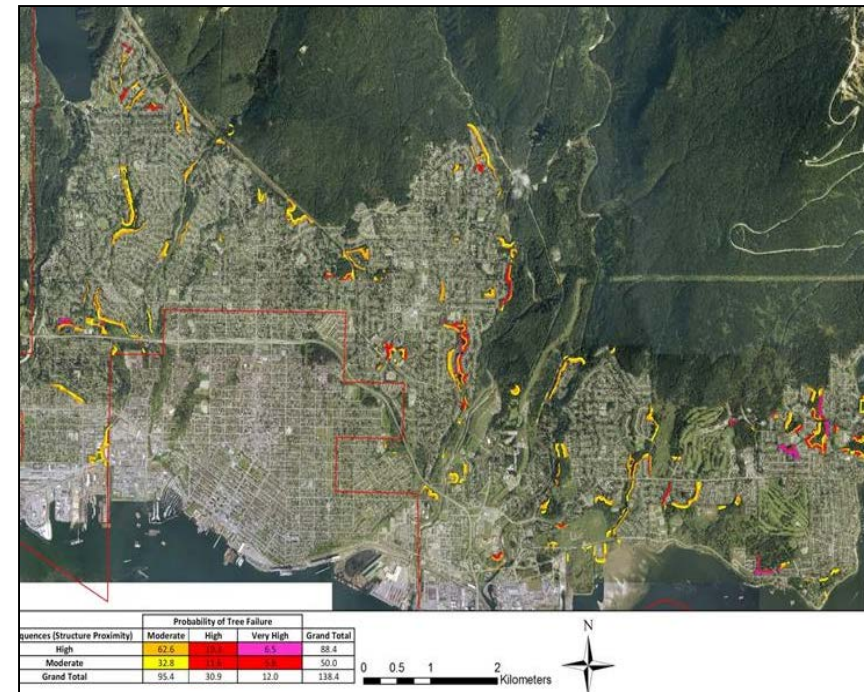
- ❑ In the past 22 years, 282 tree related claims
- ❑ 39 claims paid out
- ❑ Approx. 13% of total

- ❑ Statistics indicate that the District has been diligent in meeting its' "duty of care"

- ❑ We cannot entirely eliminate risk, however we are proactively working to REDUCE risk associated with trees on District Property

Proactive Tree Risk Management

- ❑ Assessment of tree health is our most effective means of pro-actively assessing how trees will perform under any conditions, including storms
 - healthy trees perform better than unhealthy trees, in most cases...
- ❑ Climate change and development
- ❑ Incorporating these lessons into the Climate Change Adaptation Plan
- ❑ City of Coquitlam case study
- ❑ Build on previous Blackwell report
 - ❑ Currently unfunded



Conclusion



“to preserve and enhance the Districts attractive forested character.....while recognizing the responsibility to minimize risk to public and property”