

# Highway 1 Interchange Improvements

Council Workshop

April 18, 2016

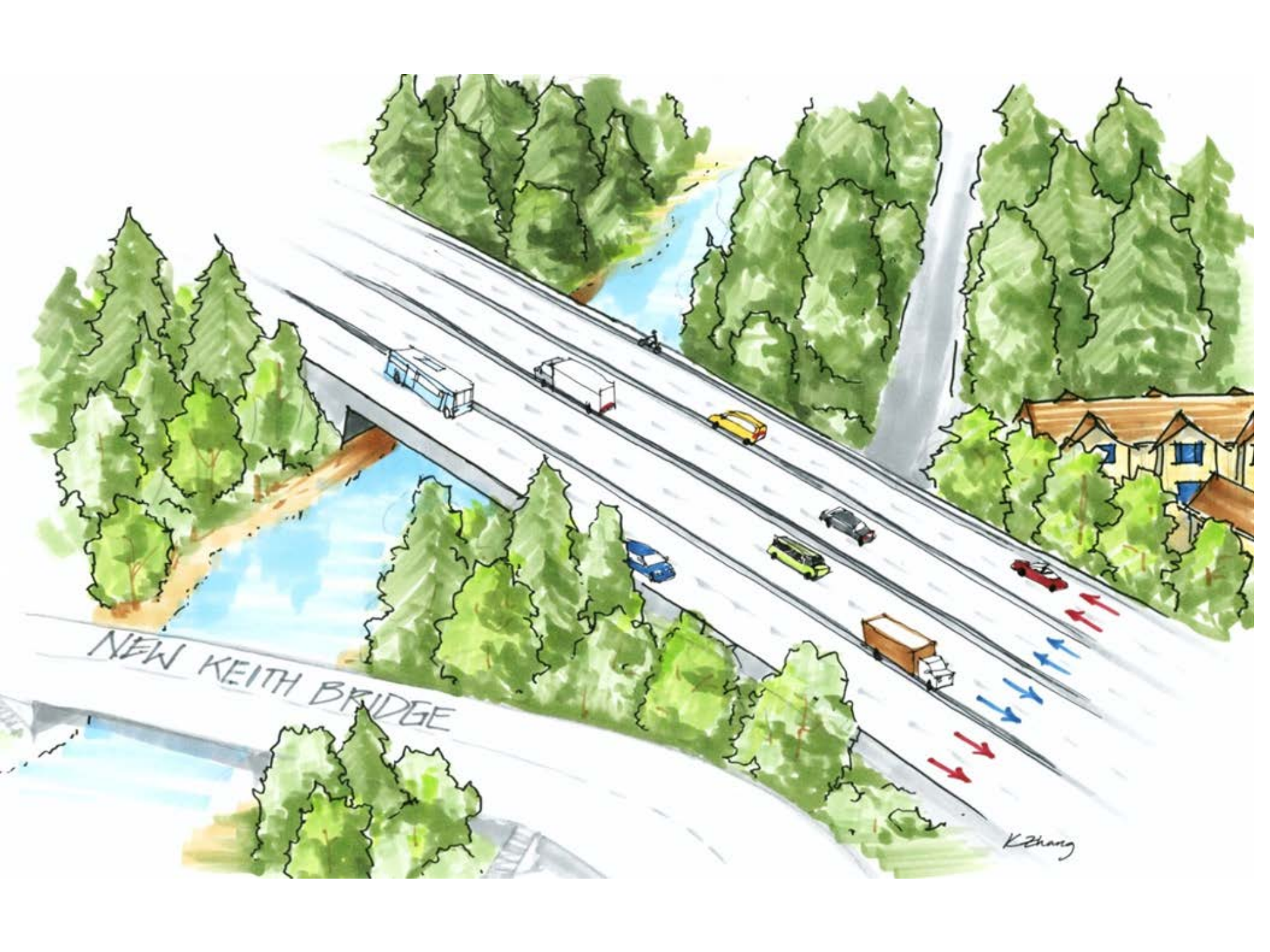
Tegan Smith

Doc #2851997



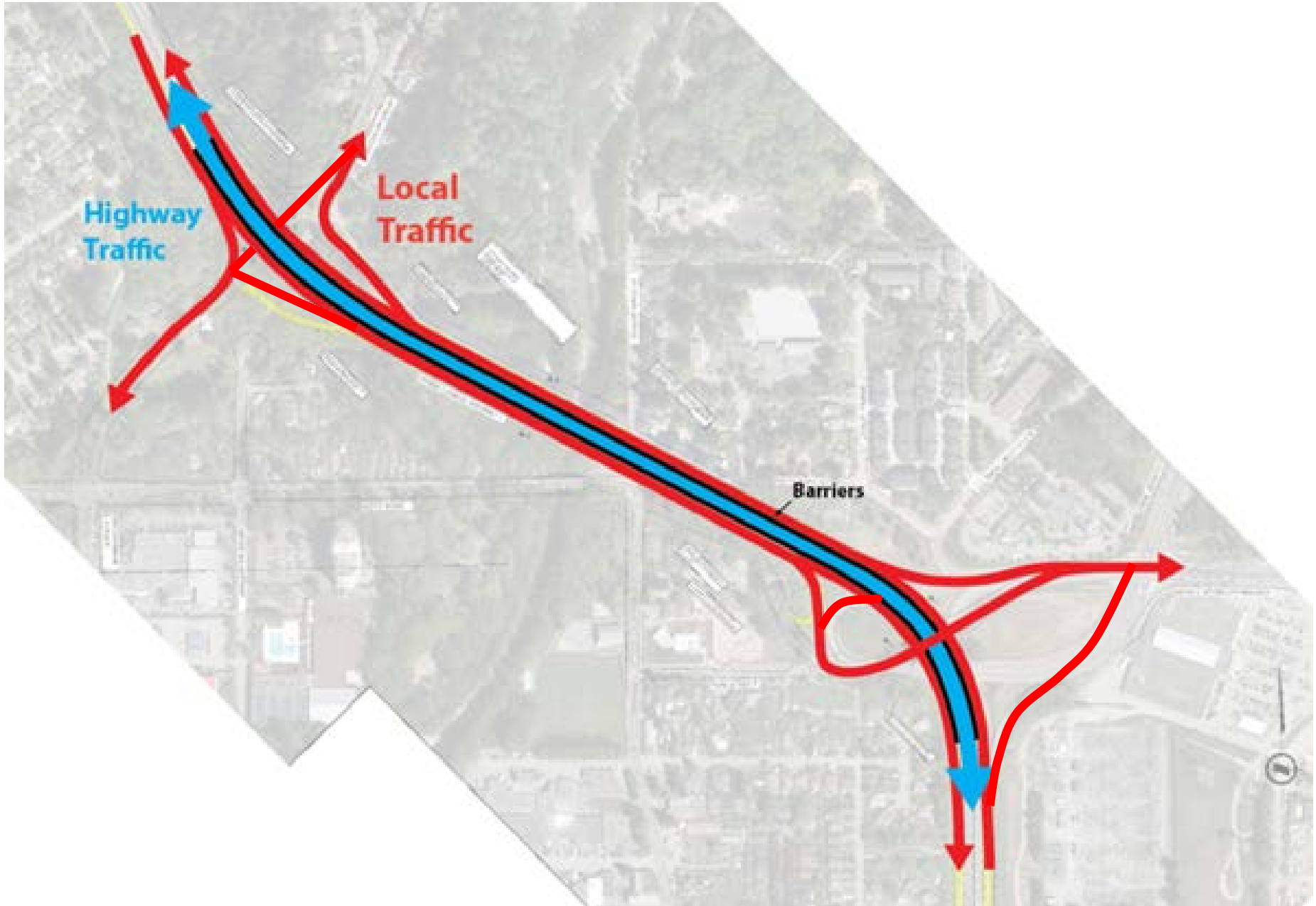
# Ministry's Package B (2014)





NEW KEITH BRIDGE

K Zhang



Highway  
Traffic

Local  
Traffic

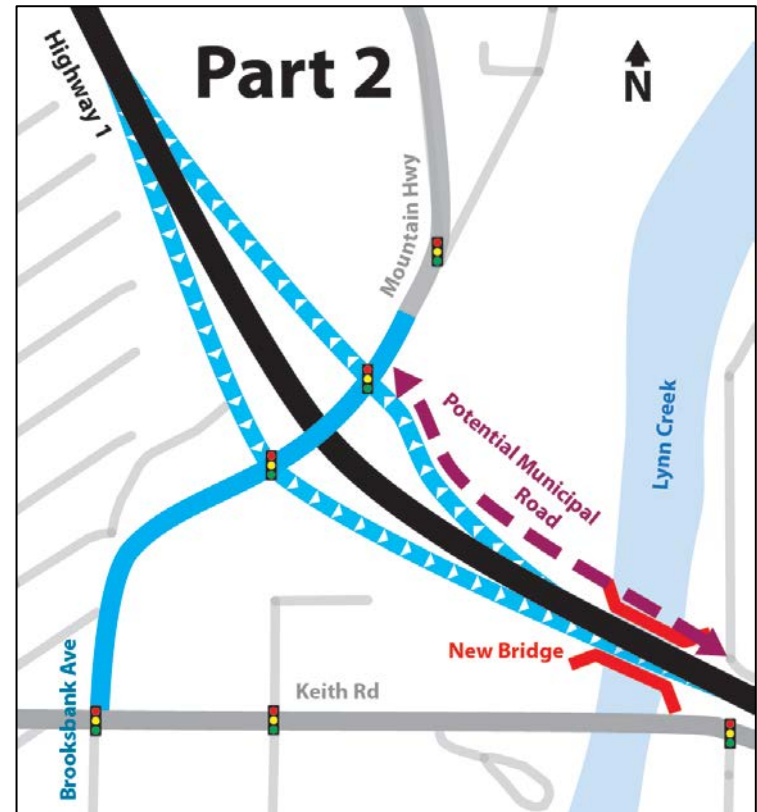
Barriers

# Mountain interchange

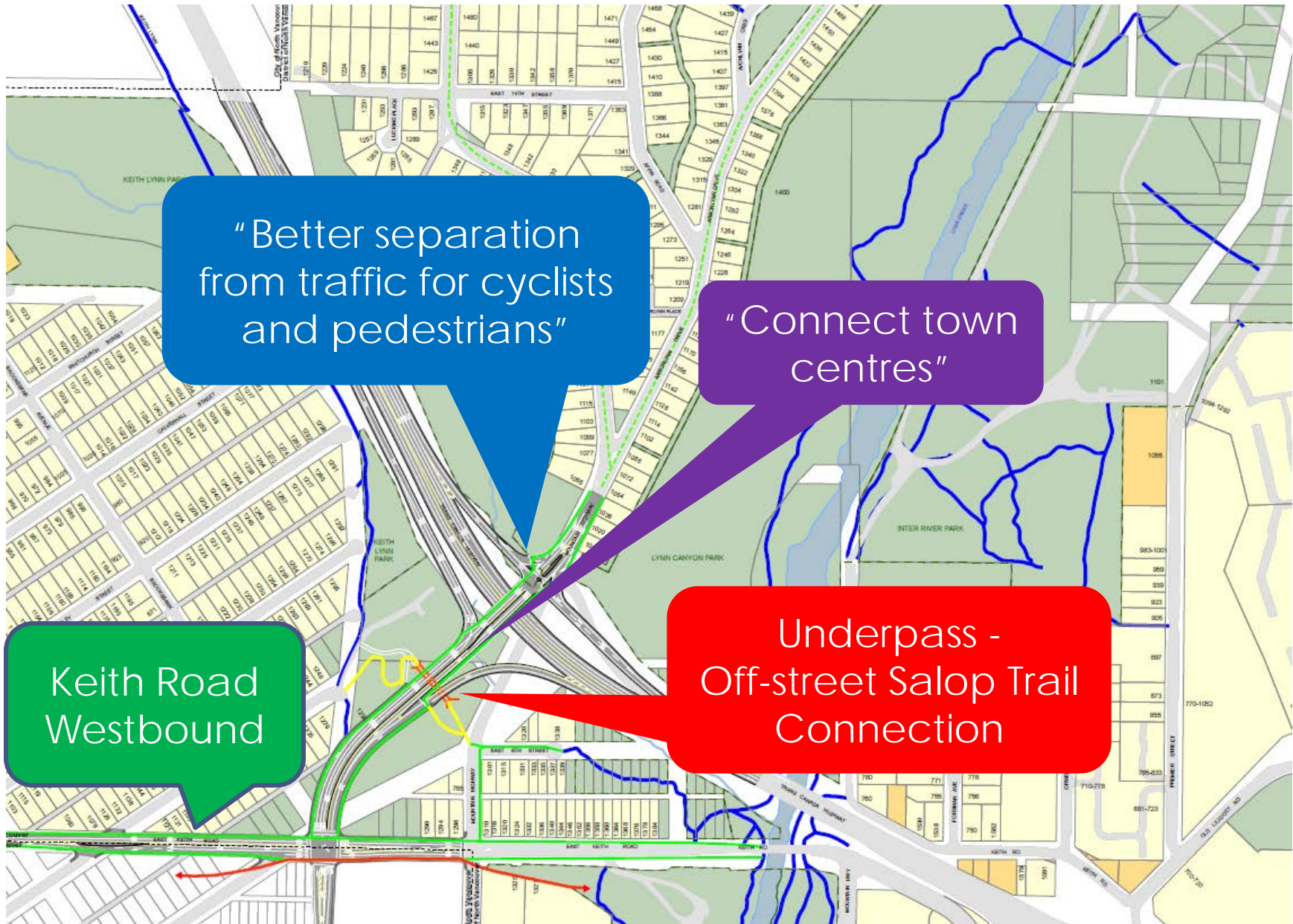
Part 1  
Earlier work for 2018



Part 2  
Upgrade with Lynn Creek Bridge



# Active Transportation



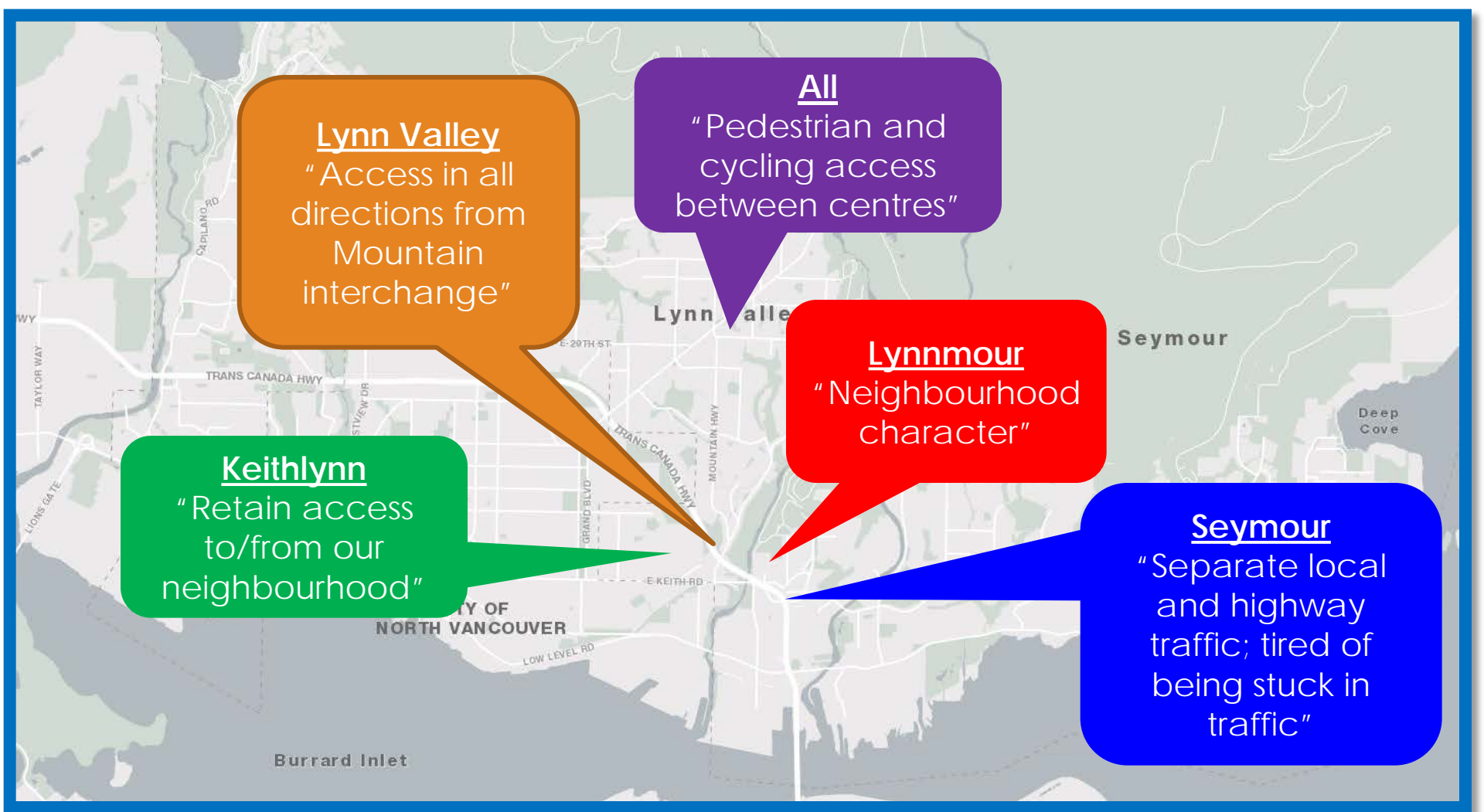
“Better separation from traffic for cyclists and pedestrians”

“Connect town centres”

Underpass -  
Off-street Salop Trail  
Connection

Keith Road  
Westbound

# Community Consultation



Lynn Valley  
"Access in all directions from Mountain interchange"

The map shows the Lynn Valley area in North Vancouver, British Columbia. It features several callout boxes with specific community feedback. The orange box points to the Mountain interchange area. The purple box points to the central Lynn Valley area. The red box points to the Lynnmour area. The blue box points to the Seymour area. The green box points to the Keithlynn area. The map includes labels for various roads such as Trans Canada Hwy, Mountain Hwy, and E-20th St, as well as geographical features like Burrard Inlet and Deep Cove.

All  
"Pedestrian and cycling access between centres"

Lynnmour  
"Neighbourhood character"

Keithlynn  
"Retain access to/from our neighbourhood"

Seymour  
"Separate local and highway traffic; tired of being stuck in traffic"

Thank you

