



Capilano Water Main Project

DISTRICT OF NORTH VANCOUVER COUNCIL UPDATE

Steve Billington

COMMUNITY LIAISON OFFICER

Goran Oljaca

DIRECTOR, ENGINEERING & CONSTRUCTION
WATER SERVICES

April 4, 2016

Project Update

- Current Status
- Schedule Impacts
- Remaining Work
- Schedule of Work
- Public Involvement Activities

Schedule Impacts

- Unforeseen Ground Conditions
- Inclement Weather
- Utility Conflicts

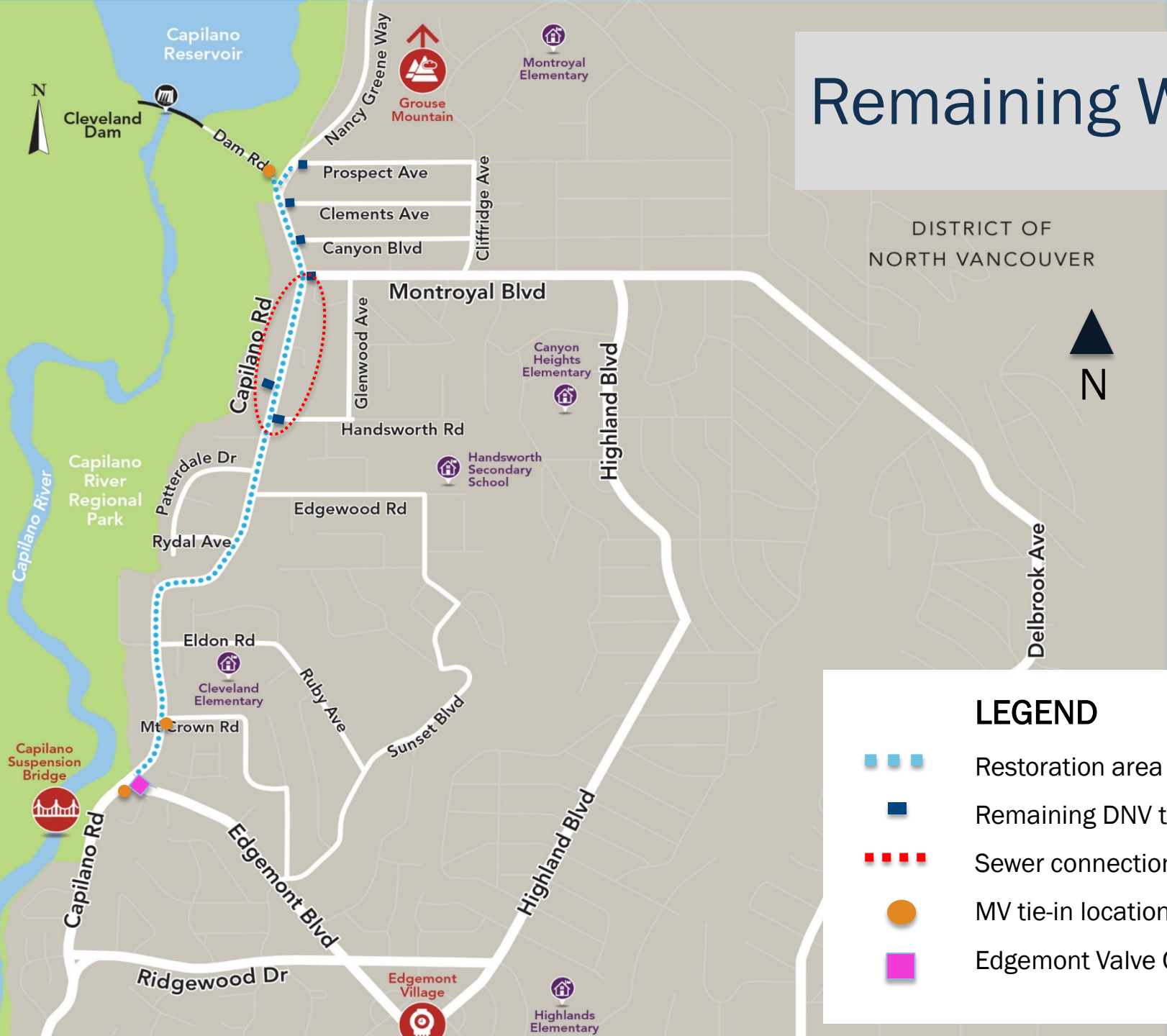
Current Status



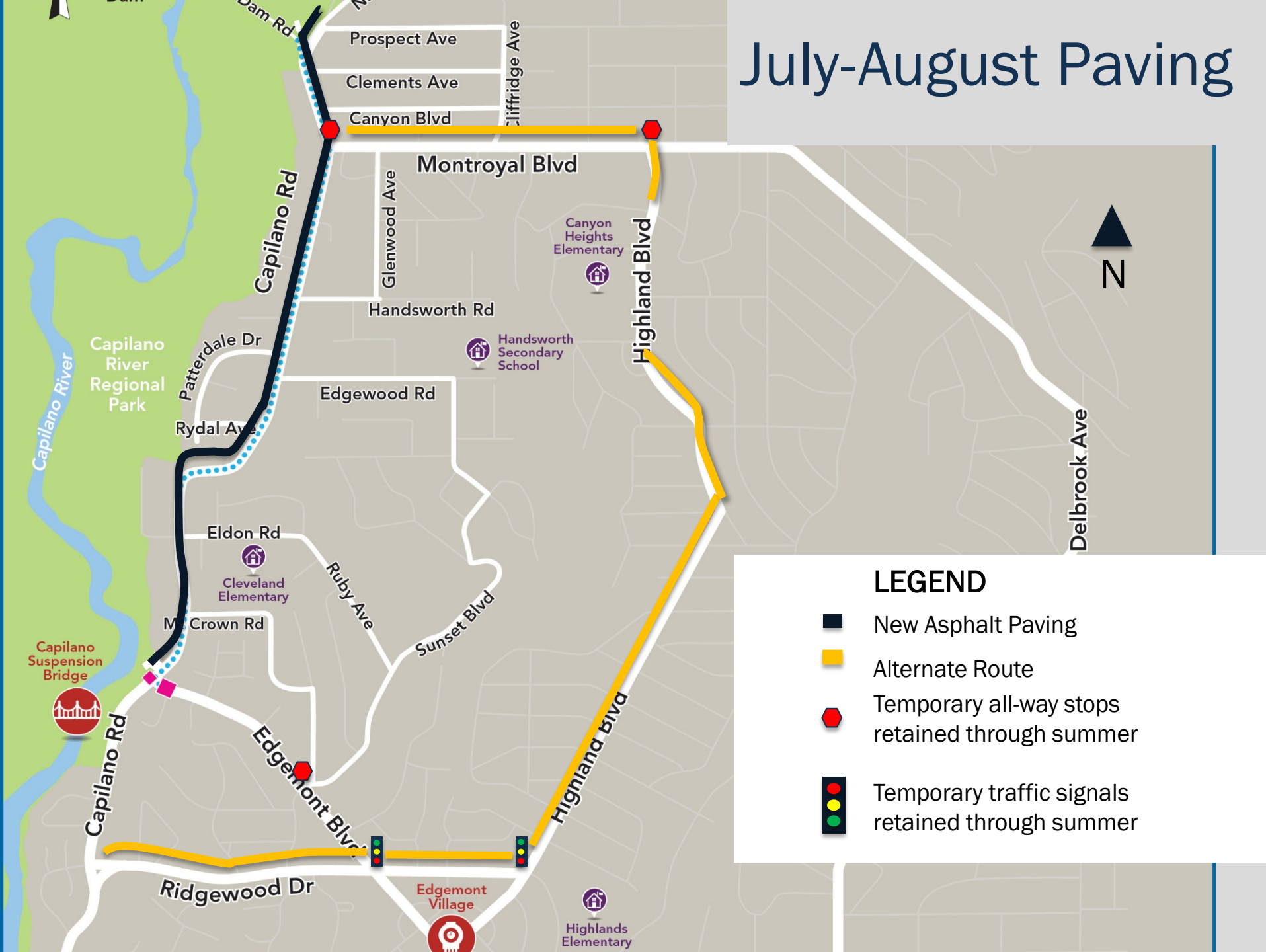
LEGEND

- Completed MV water main
- Completed DNV water main tie-ins
- Underground Line Valve Chamber
- MV tie-in location
- Contractor site office location

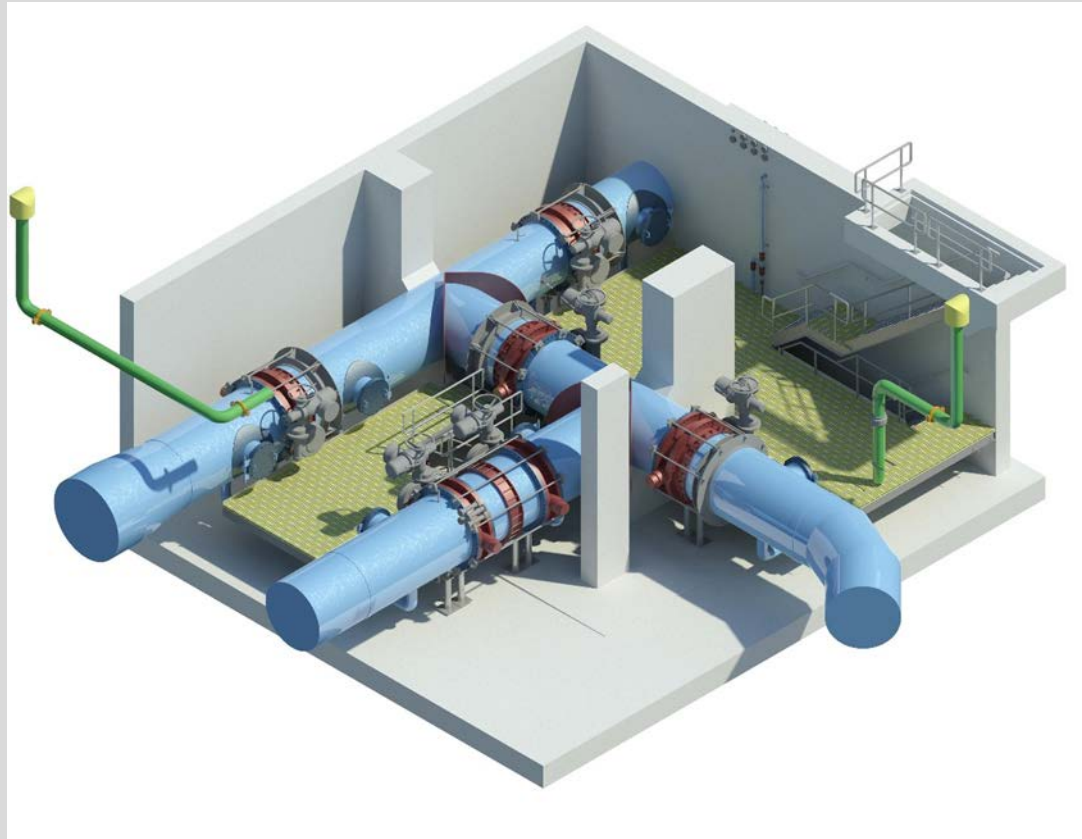
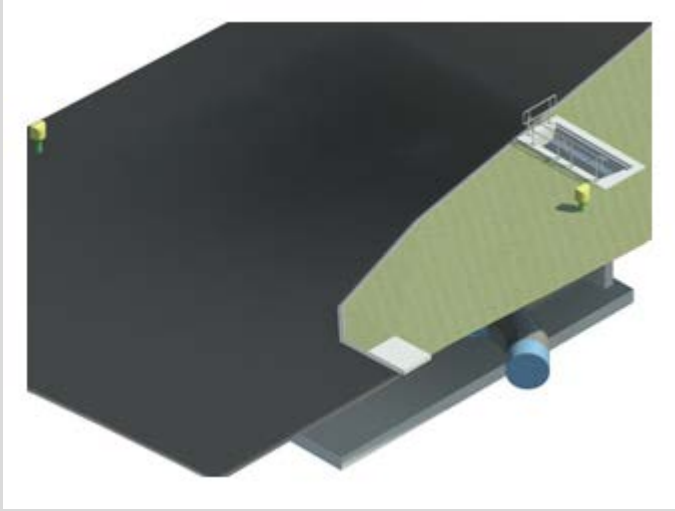
Remaining Work



July-August Paving



Edgemont Valve Chamber



Schedule of Work

Task Name	2016												2017				
	1st Quarter		2nd Quarter			3rd Quarter			4th Quarter			1st Quarter					
	Feb	Mar	Apr	May	Jun	Jul	Aug	Sep	Oct	Nov	Dec	Jan	Feb	Mar	Apr	May	
MV 450-600 mm Connections at Mt. Crown																	
DNV Service Connections																	
Boulevard Restoration																	
Sidewalk Restoration																	
Temporary Montroyal Bridge Replacement (DNV)																	
Road Base and Permanent Paving																	
Detour Decommissioning																	
Crossover Chamber at Edgemont Blvd																	

Public Involvement Activities

Product	Topic	Quantity
Advertisements	Notice of construction and detours	5
Newsletters	Change in local detours and general updates	22
Door hangers	Local access passes, driveway restrictions, service interruptions and temporary parking removal	6
Fact sheets	Project overview, traffic management and construction mitigation	3
Web updates	Construction progress and schedule	20+
Tweets	Project Updates	8
Signage	Information, “Businesses Are Open”, way-finding, directional	14+
Community and public meetings	General updates	11
Stakeholder meetings	Project introduction and progress updates	50+
CMAC	Project updates	9

Note: Next community meeting scheduled for April 27, 2016



Thank You



metrovancouver
SERVICES AND SOLUTIONS FOR A LIVABLE REGION