

Boffo Edgemont Village



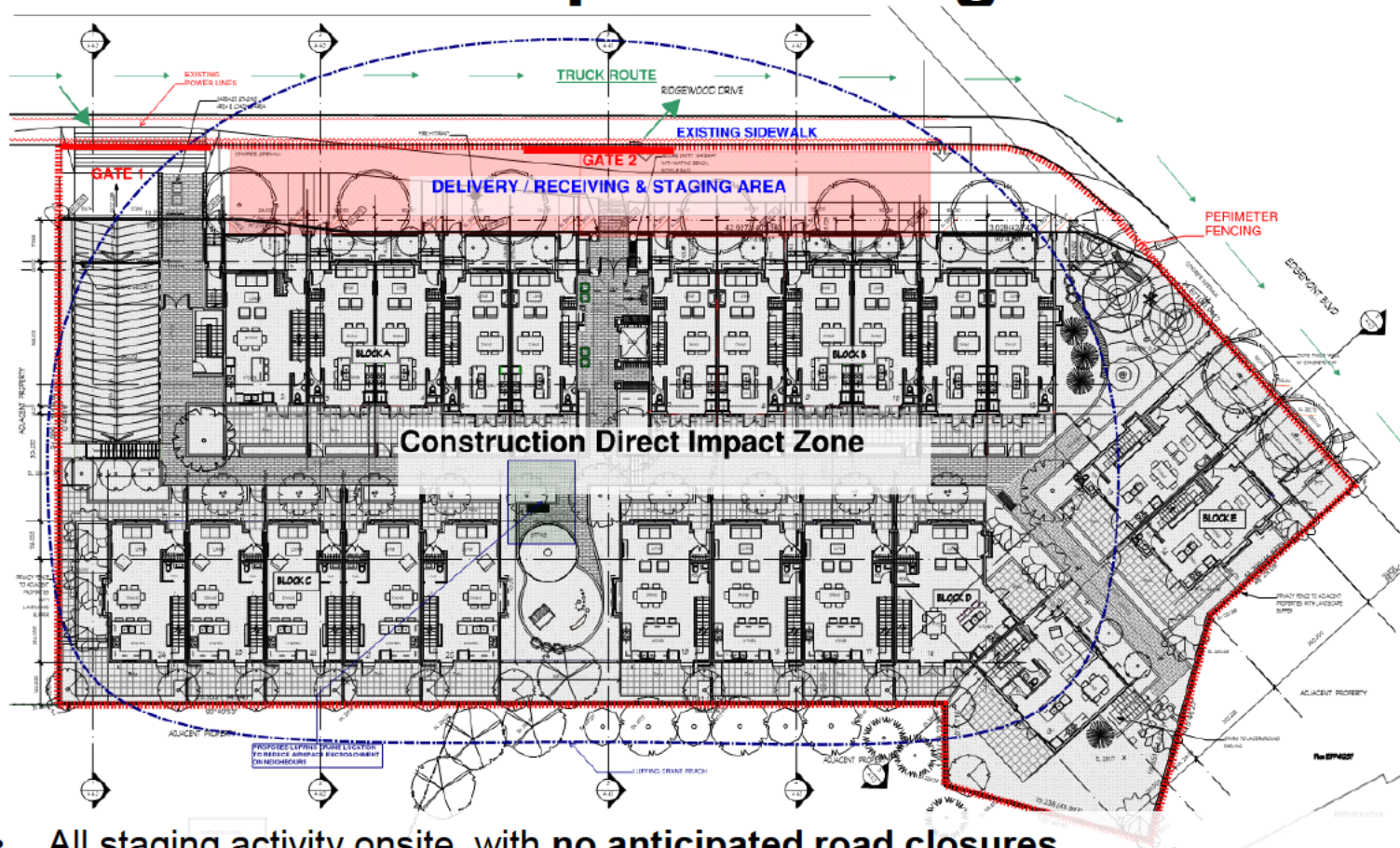
Public Hearing

February 9th 2016

Site Context



Construction Impact Management

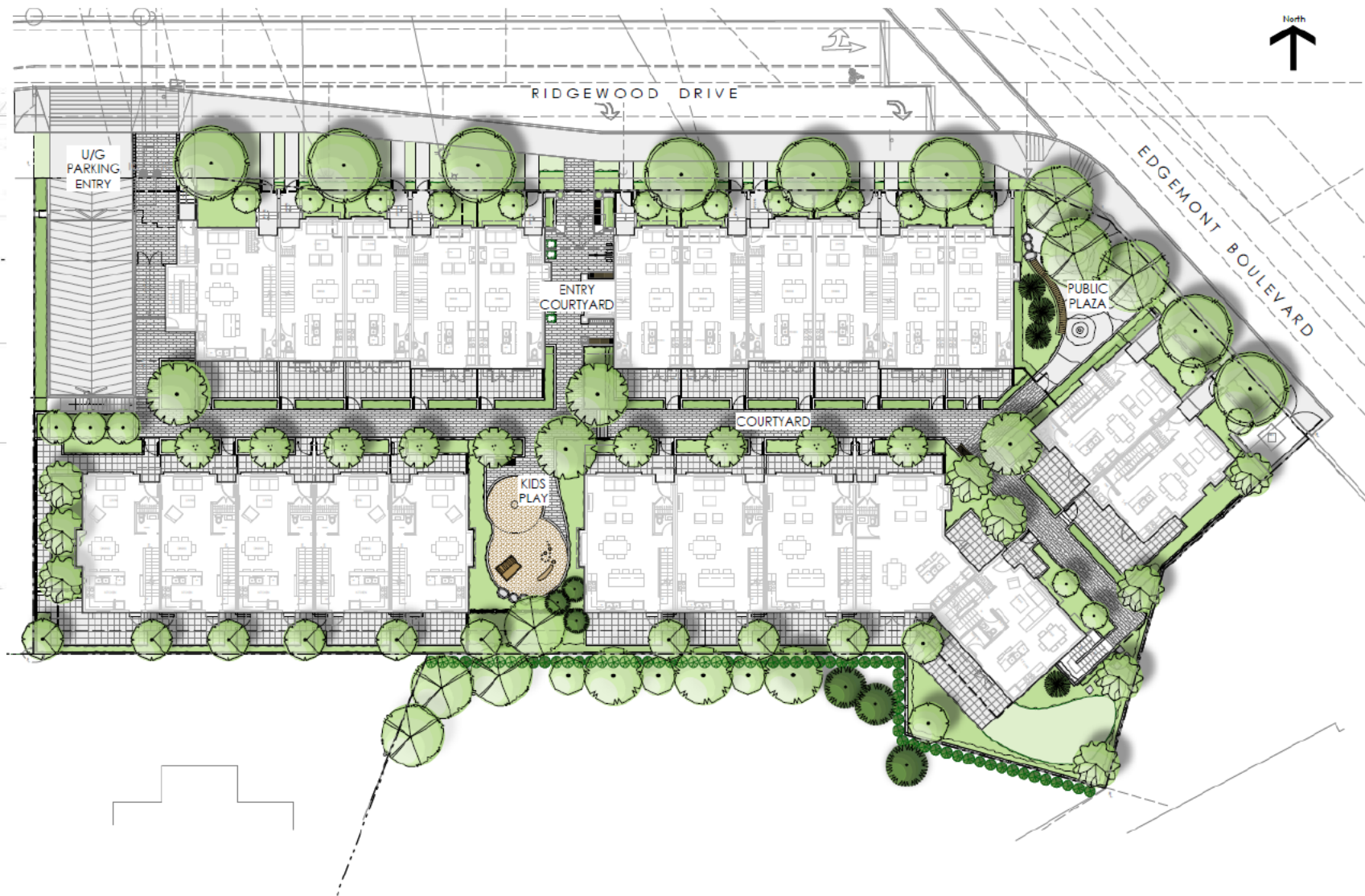


- All staging activity onsite, with **no anticipated road closures**.
- All **trade parking will be accommodated onsite**. At no time will trades occupy Edgemont Village parking or street parking.
- Other than during excavation, there will be **less than 2 large trucks per day**.

Architectural Design Overview

GATEWAY ARCHITECTURE INC

Project Site Plan



Entry Elevation



Gateway Plaza



View of Public Plaza with Seating



Granite Cobble in a Radial Pattern



Curved Benches



Specimen Trees

Gateway Plaza



Courtyard

COURTYARD

Private Patios with Entry Gates

Planting Provides Privacy and Seasonal Interest

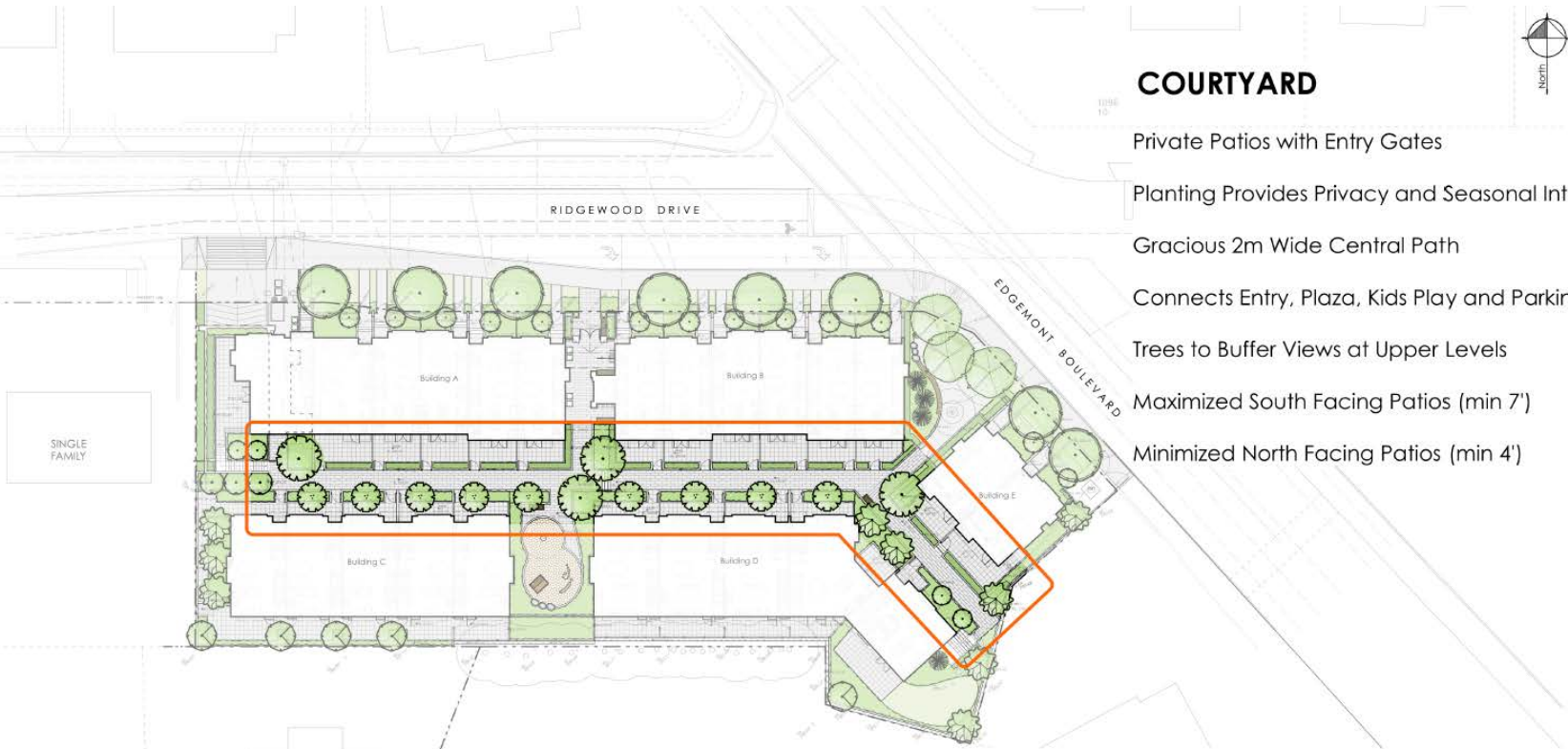
Gracious 2m Wide Central Path

Connects Entry, Plaza, Kids Play and Parking

Trees to Buffer Views at Upper Levels

Maximized South Facing Patios (min 7')

Minimized North Facing Patios (min 4')

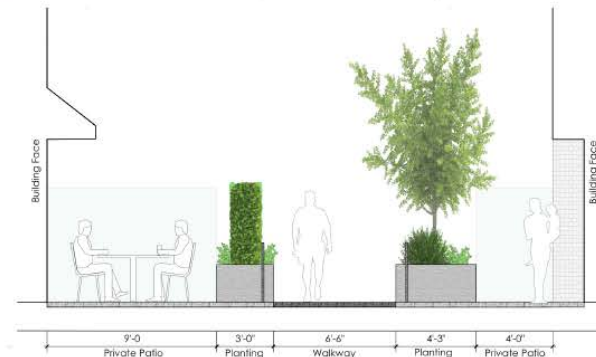


Planting for Privacy and Seasonality

SINGLE FAMILY



Courtyard Benches



Looking East Through Private Patios and Central Path

Private Amenity



KIDS PLAY

Natural Play with Child Friendly Planting

Balance Logs

Play Hut + Spinner Bowl

Bench Seating for Parents

Safety / Resilient Surfacing



View of Play Area with Seating



Child Friendly Non Toxic Planting



Kompan Play House



Spinner Bowl

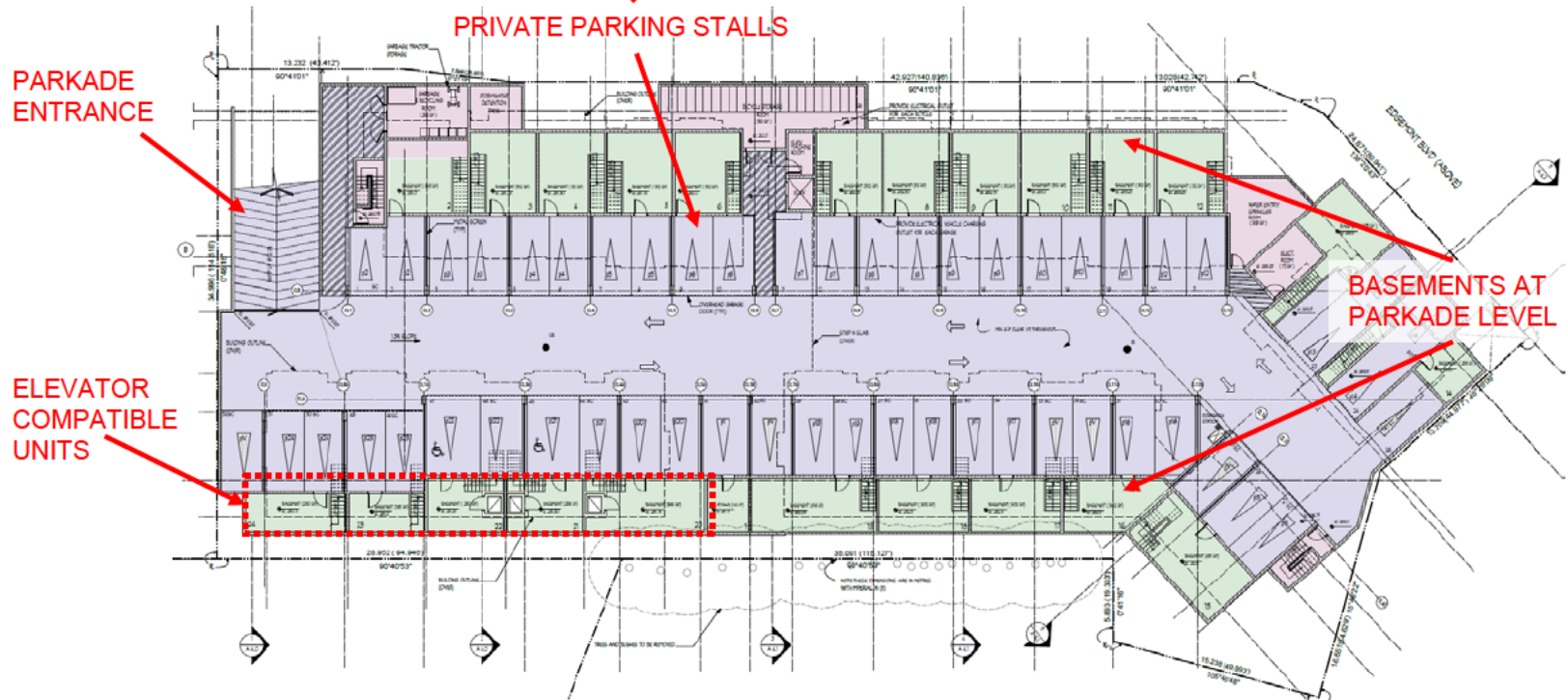
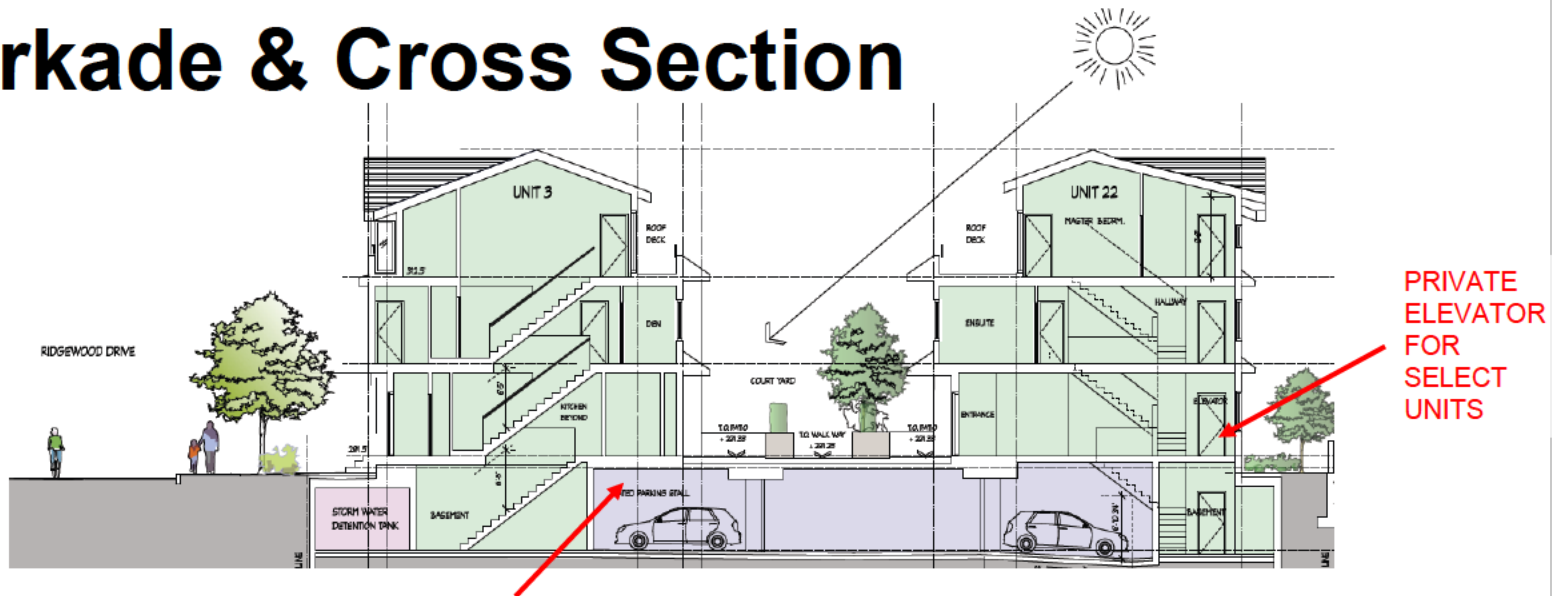


Balance Logs

Courtyard



Parkade & Cross Section



Thank You

