

NORTH VANCOUVER REUNIFICATION

> KEY INSIGHTS AND NEXT STEPS



COMBINE

purpose

**blue ribbon
committee report,**
review of literature,
and other *research*

DEVELOP
**comprehensive
research plan &**
> *workable steps* <
for action to 2018

1 BIG PICTURE: understanding municipal amalgamations

2 LOCAL CONTEXT: key conclusions for north vancouver

3 RECOMMENDED RESEARCH PLAN: 2016-2018

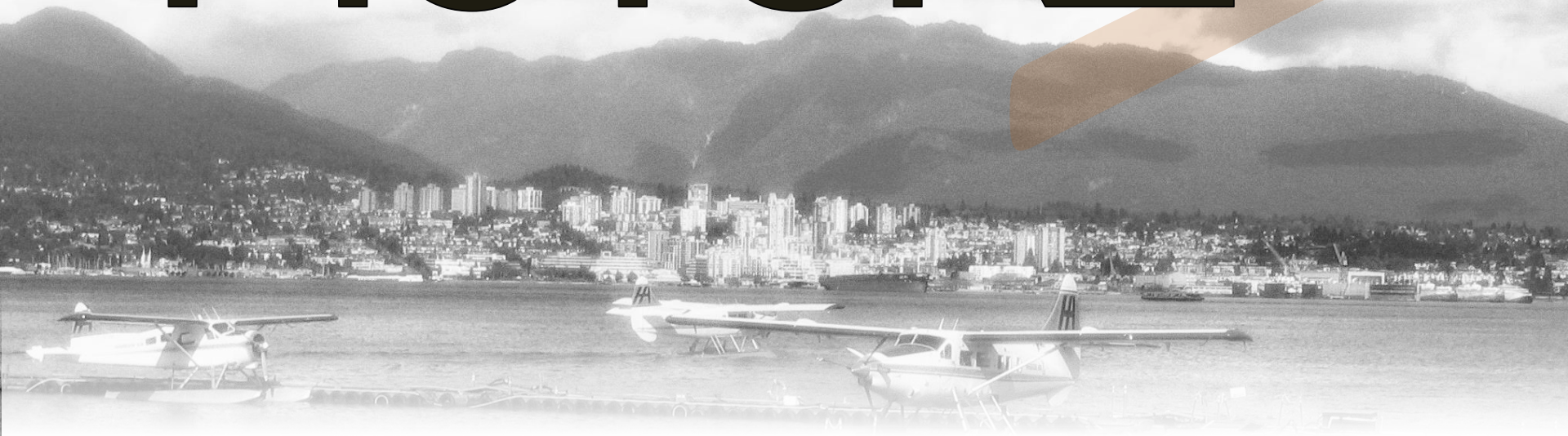
0
1
2
3
4
5
6
7
8
9



BIG

**UNDERSTANDING
MUNICIPAL
AMALGAMATIONS**

PICTURE



BIG QUESTIONS:

HOW DO WE DECIDE
*where to draw
municipal
boundaries?*

WHICH SERVICES
*should local
governments
provide? To whom?*



cities provide...



**LOCAL,
REGIONAL &
GLOBAL services**



multi-tier government forms
help meet these responsibilities

LOCAL

**KEY CONCLUSIONS
FOR NORTH
VANCOUVER**

CONTEXT



KEY CONCLUSION <

#1



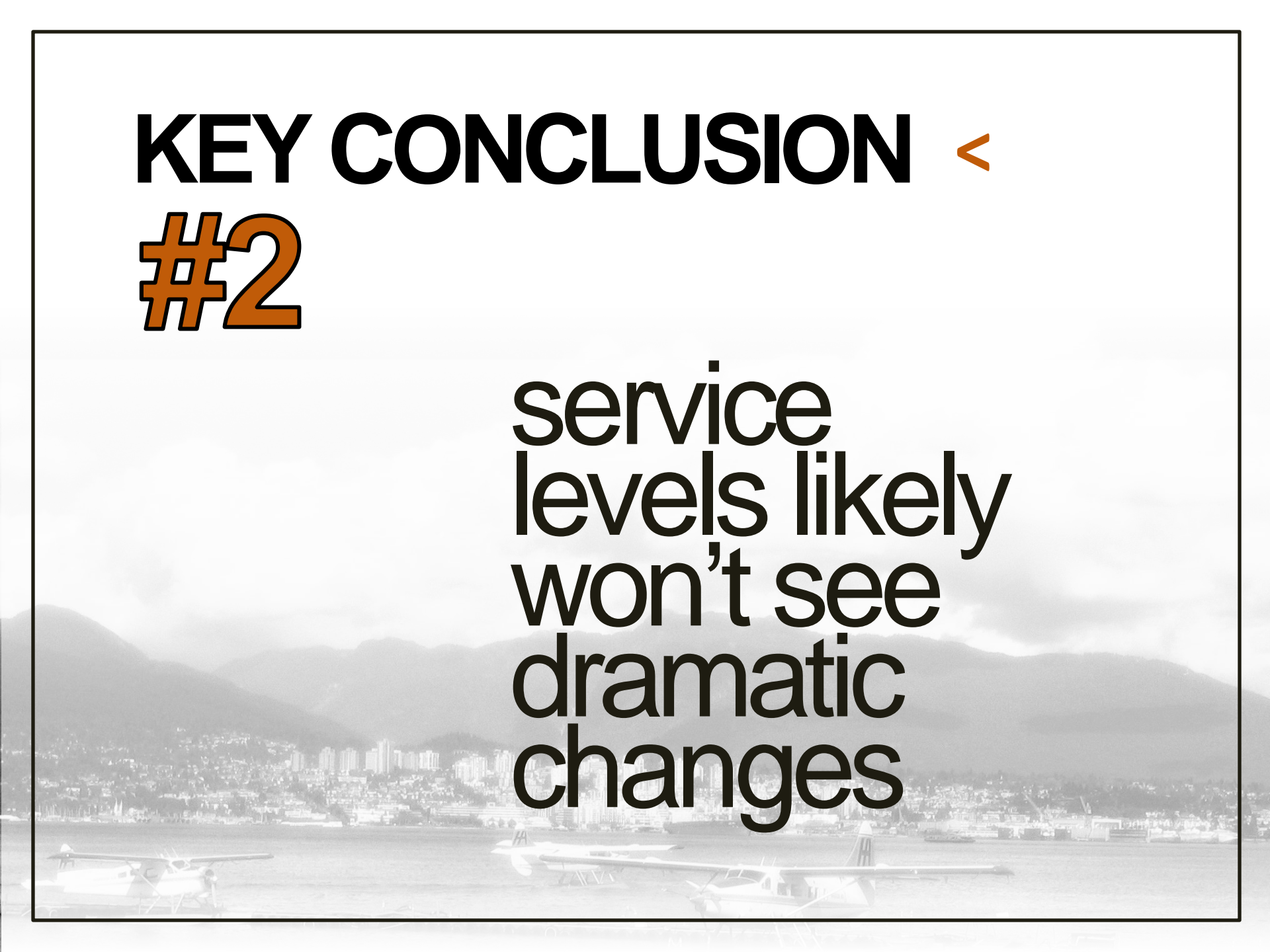
significant
efficiency
gains
unlikely



KEY CONCLUSION <

#2

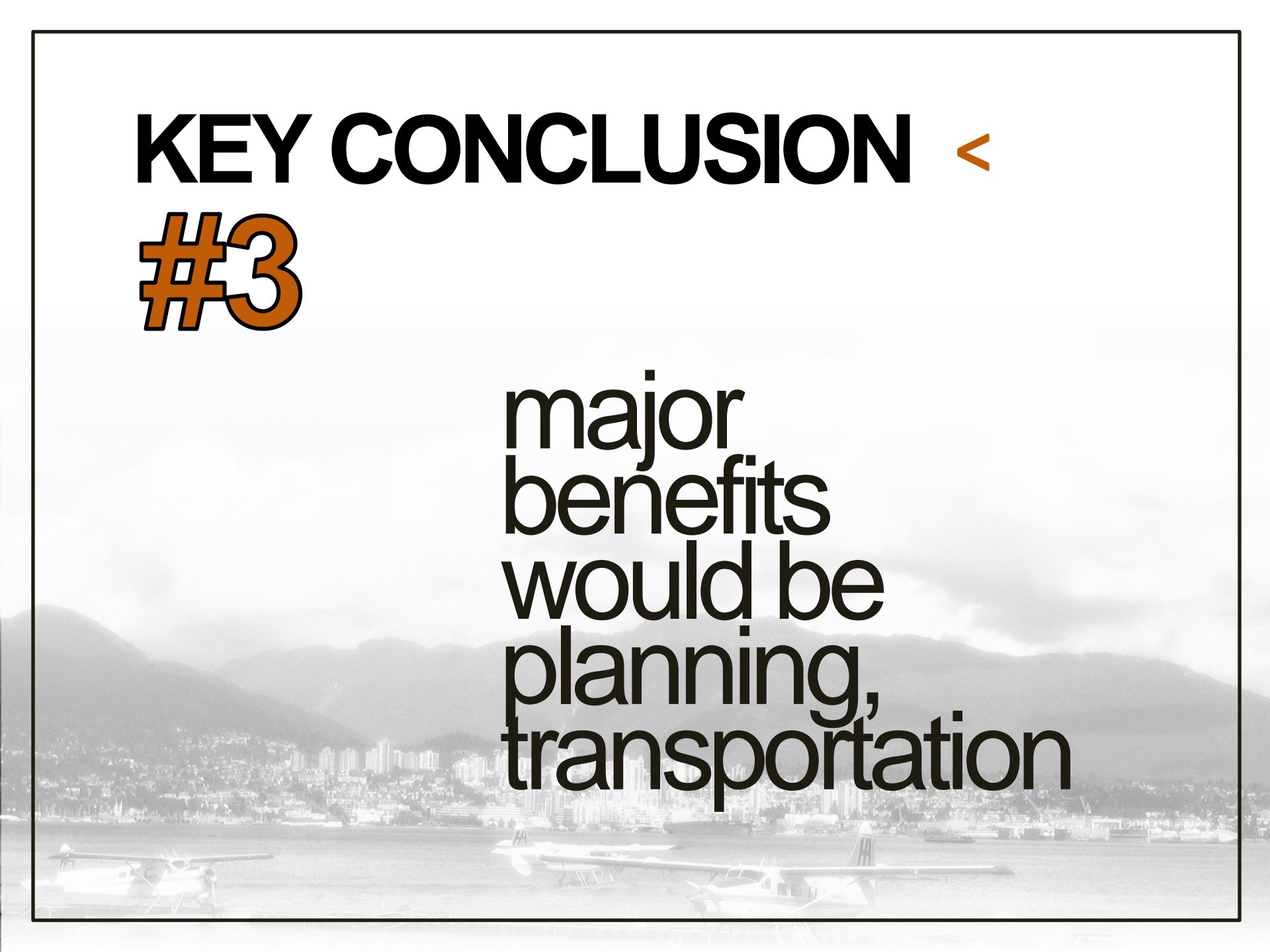
service
levels likely
won't see
dramatic
changes



KEY CONCLUSION <

#3

major
benefits
would be
planning,
transportation



DRAWBACKS

TRANSITION COSTS

often
underestimated
by governments

DRAWBACKS



EQUITY & FAIRNESS

taxation,
fiscal positions,
service levels

DRAWBACKS

GOVERNMENT

democratic functioning,
accountability and
responsiveness

RECOMMENDED RESEARCH PLAN

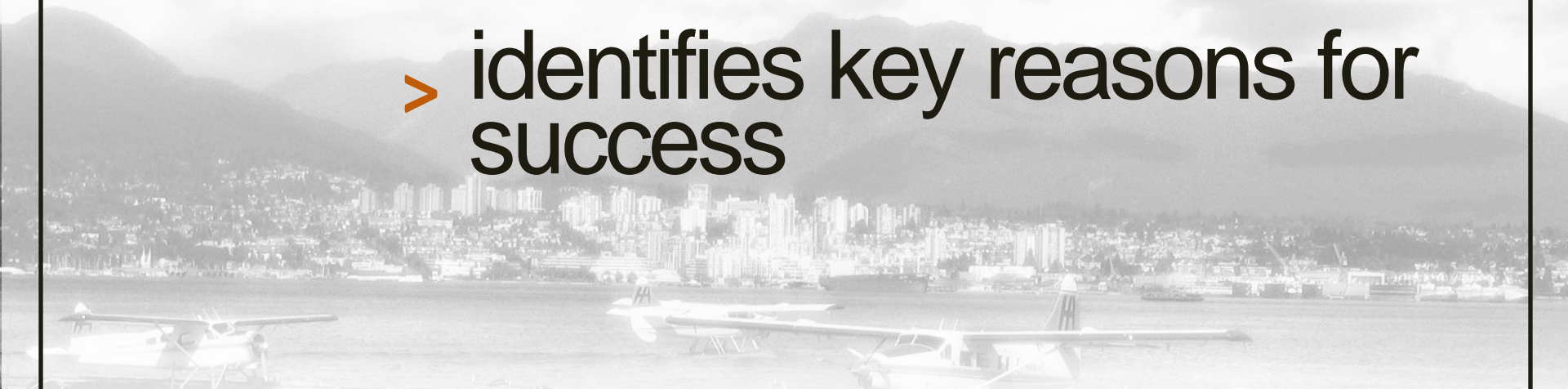
2016-2018



RESEARCH PLAN

1 abbotsford-matsqui case study

- > establishes context for north vancouver merger
- > identifies key reasons for success



RESEARCH PLAN

2 services evaluation

- > identifies missing organizational linkages
- > examines overlaps and services levels



RESEARCH PLAN

3 financial metrics investigation

- > helps to clarify contentious issues
- > may have accuracy concerns without city participation

RESEARCH PLAN

4 citizen engagement

- > helps clarify citizens' attitudes towards local government
- > builds consensus



RESEARCH PLAN

timelines

abbotsford-matsqui study | **2016 (Q1)**

services evaluation | **2016 (Q2-3)**

financial metrics | **2017**

citizen engagement | **2018**