

Group Child Care in Single-Family Residential Zones

Cristina Rucci, District of North Vancouver

Suzy Lunn, District of North Vancouver

Glenda Burrows, Vancouver Coastal Health

Committee of the Whole

December 10, 2013





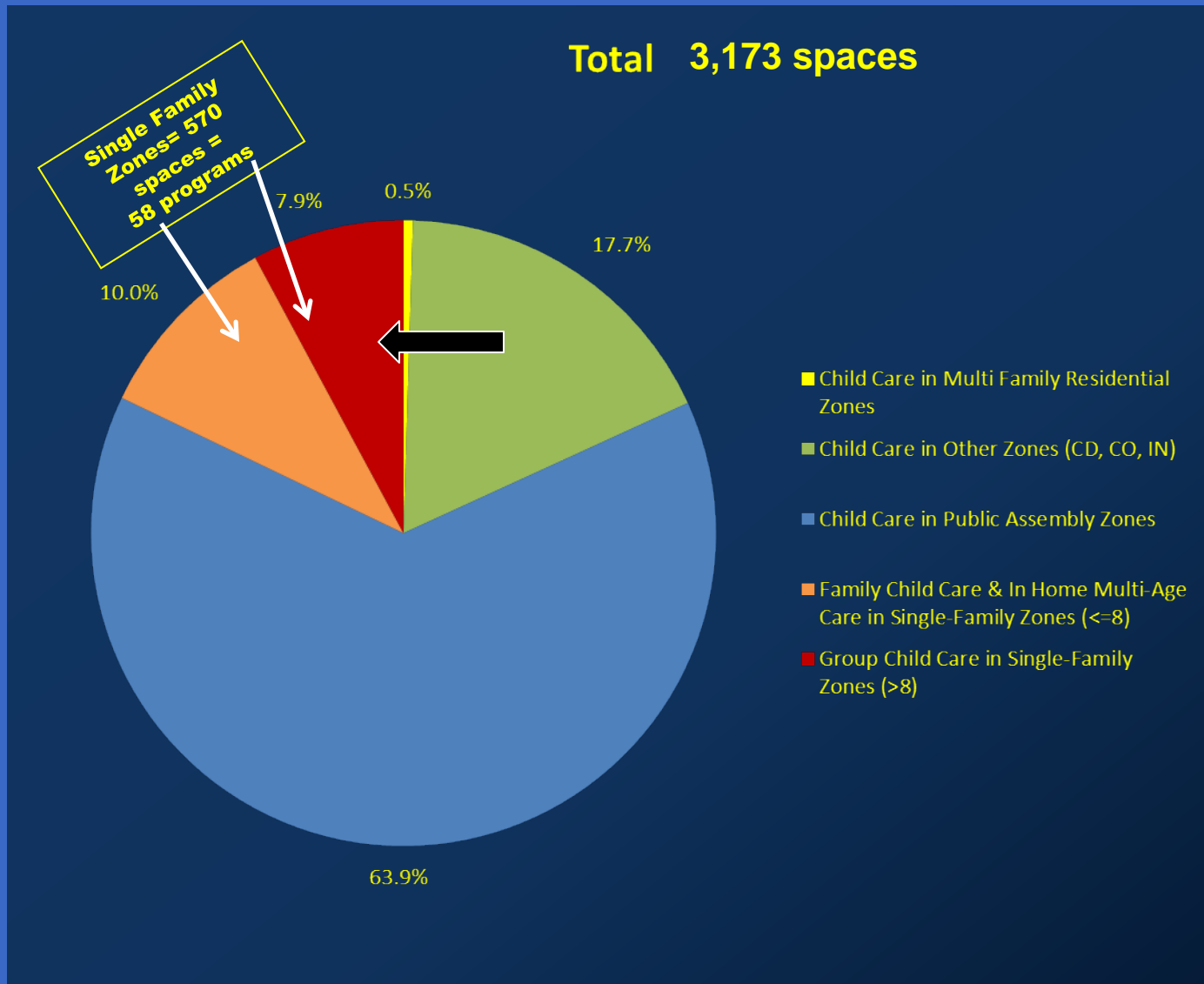
Overview of Presentation

- Context for Supporting Child Care
- Child Care in the District of North Vancouver
- Role of Vancouver Coastal Health
- Child Care Application Process
- Best Practice Enhancements to DNV's Process and Guidelines
- Questions and Discussion

Pay Off For Quality Child Care



Licensed Spaces in the DNV

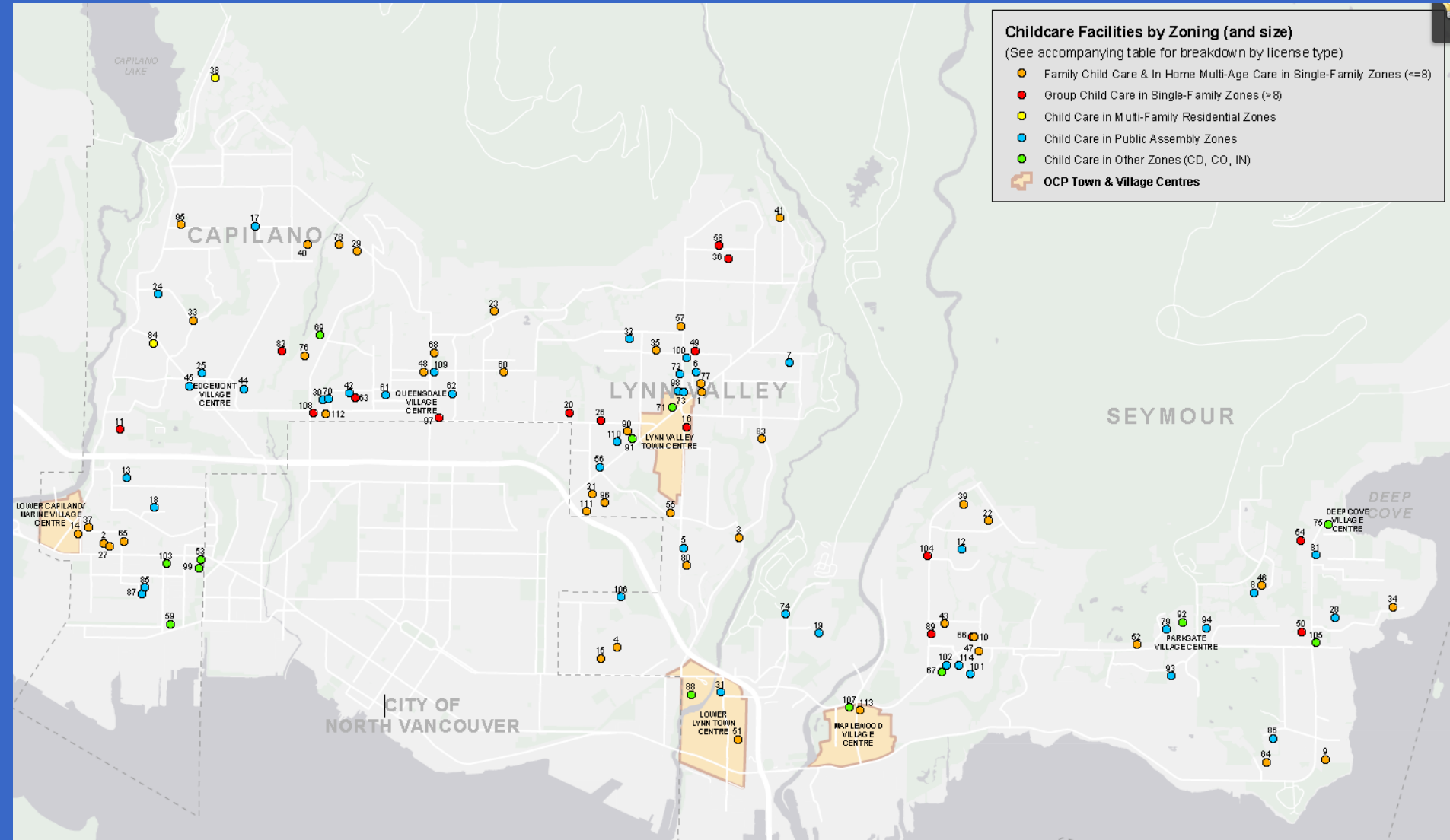


Child Care Facilities by Zoning

Childcare Facilities by Zoning (and size)

(See accompanying table for breakdown by license type)

- Family Child Care & In Home Multi-Age Care in Single-Family Zones (<=8)
- Group Child Care in Single-Family Zones (>8)
- Child Care in Multi-Family Residential Zones
- Child Care in Public Assembly Zones
- Child Care in Other Zones (CD, CO, IN)
- OCP Town & Village Centres





Role of Vancouver Coastal Health: Mandate

- Legislation: *Community Care and Assisted Living Act* and the Child Care Licencing Regulations
- To ensure that children in care are safe from harm and that they have opportunities for social, emotional, physical and intellectual growth



Licensing Officers:

Ensure: The health, safety and dignity of children in care through empowering Licencees to comply with the provincial legislation





Licensing Provides:

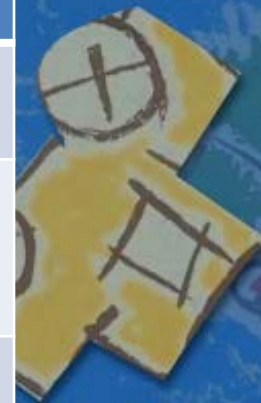
- Outcome based legislated requirements
- Monitoring
- Somewhere to register concerns
- Fair and unbiased investigations
- Independent appeal process





Licensing Regulations

Care Program	Maximum Group Size	Ratios of staff to children in each group
Group Child Care (Under 36 months)	12	1 infant/ toddler educator to 4 children
Group Child Care (30 months to school age)	25	1 educator to 8 children
Preschool (30 months to school age)	20	1 educator to 10 children
Group Child Care (school age)	24-30 (depending on age of children)	1 responsible adult to 12-15 children
Multi-Age Child Care	8	1 educator

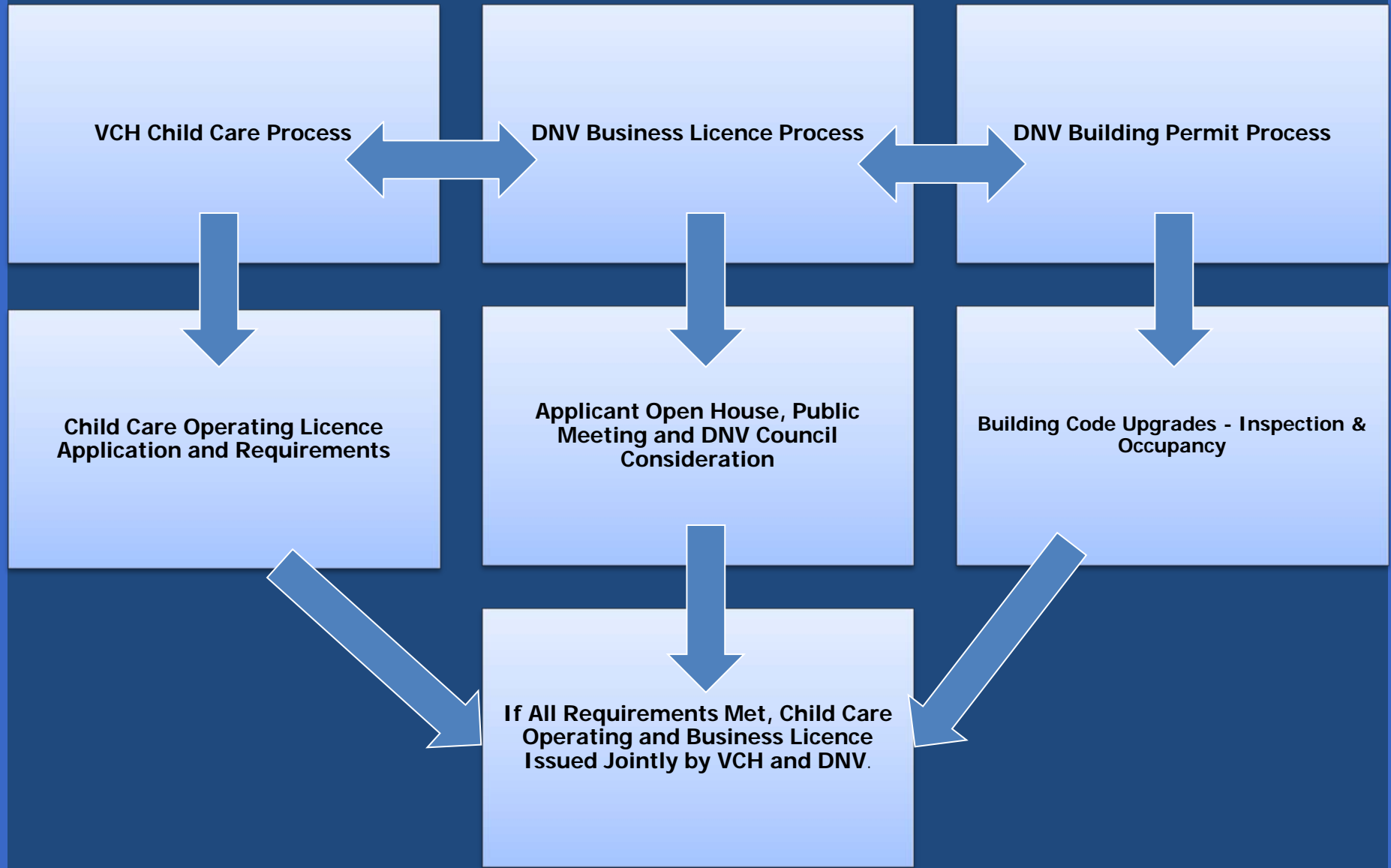




Inspections conducted by Licencing Officers include a review of:

- Care and supervision
- Hygiene and communicable disease control
- Licencing
- Medication
- Nutrition and food services
- Physical facility, equipment and furnishings
- Policies and procedures
- Program with an emphasis on Schedule G – the quality of care
- Record and reporting
- Staffing

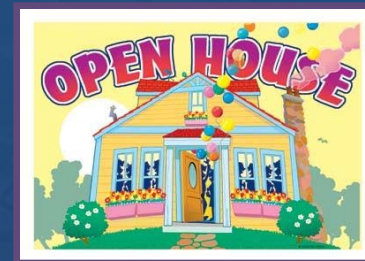
Group Childcare in SFZ: District Process >10





Enhancements to the District's Process

- Enhanced Public Consultation Process



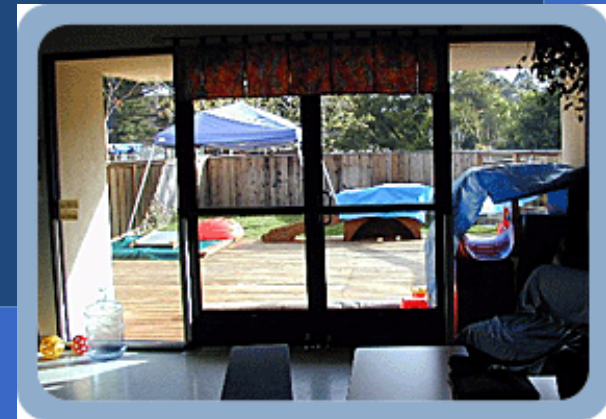
- Building Code Bulletin on Child Care

- Child Care Application Submission Checklist



Enhancements to the District's Child Care Planning Guidelines

- Strong indoor/ outdoor connection,
- Adequate outdoor play space,
- Access to natural light, and



- Neighbourhood support
- Parking standards



Thank You!!!



THAT the Committee of the Whole recommend to Council:

THAT Council approve the enhanced planning guidelines and process for considering applications for group child care in single-family residential zones as outlined in this report.