

# Sports Field Program

## Inter River Park, Argyle School ATF & Kirkstone ATF Conversion

Council Workshop | November 14, 2017

Presented by:

Susan Rogers, Manager, DNV Parks

Carolyn Girard, Park Planner, DNV Parks



# Agenda

1. Background of Sports Field Program
2. Financial Strategies
3. Inter River Park ATF Feasibility
4. Kirkstone & Argyle Status Updates
5. Questions



# Background: Sports Field Program

## *Existing DNV Sports Field Capacity Challenges:*

- Kirkstone and Fen Burdett will add 6,000 hours of capacity in 2017
- Need for additional hours to be confirmed, next 3 priorities add 8,800 hours of ATF use

Field Sites	Anticipated Hours of Play
Kirkstone Park	3,000
Fen Burdett ( CNV )	3,000
<b>New capacity in 2017</b>	<b>6,000</b>
<b>DNV Priority fields</b>	
Inter River Field #1	3,000
Inter River Field #2	3,000
Argyle School	2,800
<b>Additional capacity</b>	<b>8,800</b>





# Financial Strategies

## Context

- Limited funding for over \$50m in improvements outside centers over next 10 years
- Flat registration last 5 years, increased hours allocated to change in service levels and future growth
- Cost recovery rate is low
- Sport groups open to changes in user fee rate structure
- Teams may already be paying market rates for some hours outside of NV
- Change in fees likely not material on a per player per season basis
- Adults have a high subsidy rate

## Five Year Capital Plan

		Capital Cost M\$	Field Hours	DNV	Sports User Share
Option 1	Inter River – Field 1	\$6.2	3,000	60% of costs \$5.8m	40% of costs \$3.9m
	Argyle Field	\$3.5	2,800		
		\$9.7	5,800		
Option 2	Inter River – Field 1	\$6.2	3,000	60% of costs \$8.1m	40% of costs \$5.4m
	Inter River – Field 2	\$3.8	3,000		
	Argyle Field	\$3.5	2,800		
		\$13.5	8,800		

### Cost shares:

- DNV: 100% site preparation and environmental and 50% fields
- Sport user: 50% fields

### Funding:

- DNV: Grants, DCC's, local area CAC's, utilities, tax growth
- Sport User: user fee (e.g. 75% subsidy youth, 25% subsidy adult), capital contribution, other

# Background: Inter River Park ATF Feasibility and Conceptual Design



## Key Dates:

- Public Information Session 1: August 2016
  - Options A, B and C presented
- Council Workshop 2: October 2016: Staff directed to:
  - Implement Option A
  - Pursue other options for 2<sup>nd</sup> adjacent ATF field
- Public Information Session 2: June 2017
  - Option D presented

Option A



Option B



Option C





# Option D: 2 separated ATFs + practice area

## Pros:

- Additional lit ATF inventory (6,000 hours of annual play)
- Larger tournament capability
- Potential new fieldhouse to accommodate variety of users
- Advantage over Option B (2 side-by-side ATFs)
  - minimize differential settlement
  - reduced construction cost and impact (utilities, access road)
  - Allows for staging of field construction

## Cons:

- Environmental, visual and health impacts
  - Habitat loss
  - Removal of approx. 130 trees (rare floodplain forest)
- Loss of well used informal and natural parkland
- Increased traffic, noise and field lights

## Cost Comparison

- Option A: 1 ATF plus practice area: \$6.2m
- Option D: 2 separated ATFs plus practice area: \$8.7m
- Environmental Compensation (Option D): \$1.3m

## Park Access and Transportation Impacts

- 162 parking spaces (including bus parking)
- Improved access, circulation and drop-off (Premier Street closed with cul-de-sac)





# Public Information Session 2

June 2017

1288

## Survey Responses

(considered valid and complete)

- not statistically relevant
- not representative sample

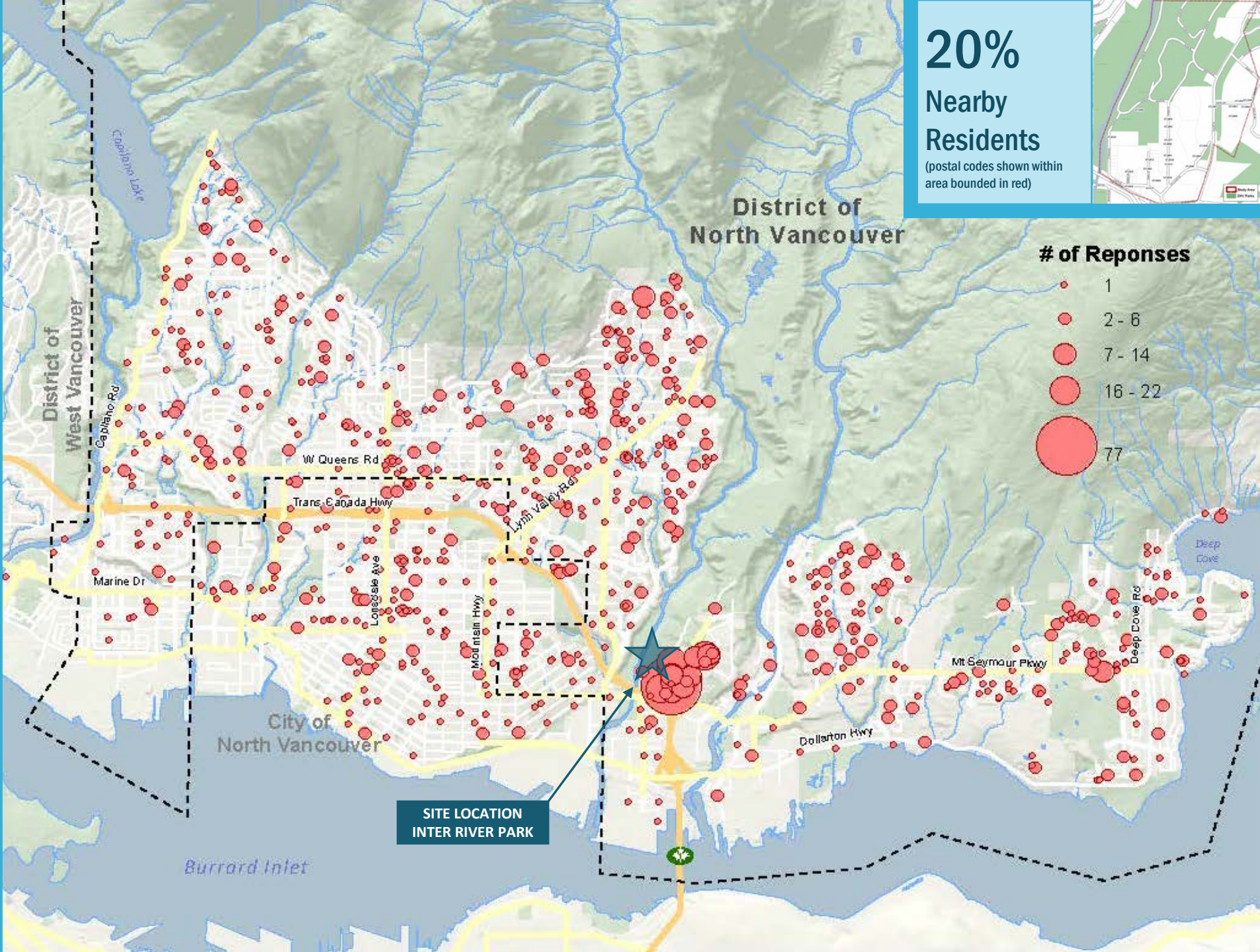
79% DNV

16% CNV

10% DWV

2% CoV

2% other



# Key Themes from Comments

## *Concerns about loss of park space and forest removal:*

- Well used by the community, local school and families (all ages, abilities and incomes) throughout the seasons for informal, natural, imaginative and physical, play; walking, running, biking; environmental education, nature appreciation, relaxation
- Rare floodplain forest (trees, shrubs and wildflowers) provides shade, improves air quality, reduces carbon footprint; provides habitat for animals, amphibians, birds
- Provides visual and sound buffer between Digger Park / adjacent residents and sporting events in Inter River Park, highway and new towers. So much forest has already been lost for fire training centre, highway and road expansion, new developments, etc.

## *Concerns about ATF field:*

- Environmental and health impacts; additional vehicular traffic; increased noise and light pollution; loss of 'natural' grass field for informal use; build ATF field in a location that's already disturbed (e.g. school sites for maximum use); spread ATF fields out throughout District



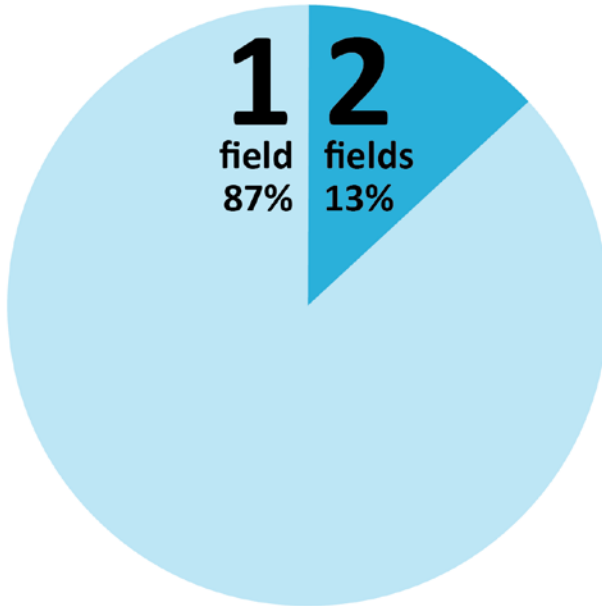
# Key Themes from Comments

## *ATF fields and fieldhouse:*

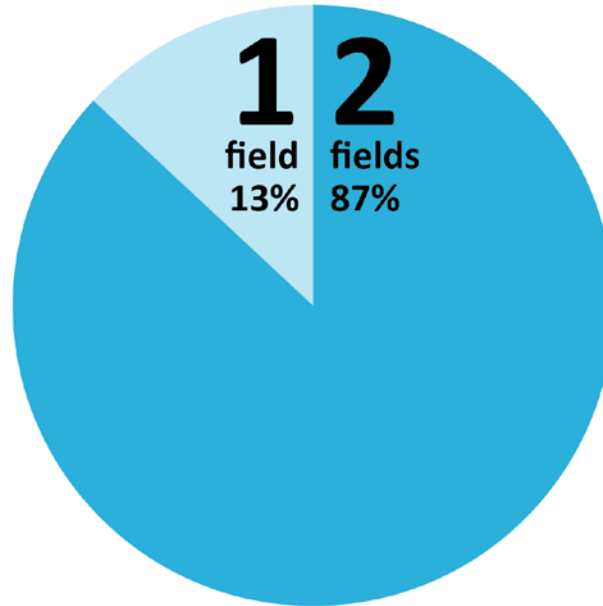
- Need for additional ATF fields to meet current and future demand for practices and games in rainy and snowy weather, and at convenient times; to keep kids interested, attract more players, and stay competitive
- Health and social benefits of active living, team sports and life skill development for all ages at a reasonable price
- Ability to host tournaments and events with economic benefit to District. Good location with an existing tournament facility, centrally located in North Vancouver, and easy access Highway 1
- Clubhouse provides a home for NVFC; possibility to purchase and consume food and drinks; and stay dry watching games and practices
- Accommodate other sports (e.g. baseball , field hockey, football); health concerns of crumb rubber;

# Survey Responses

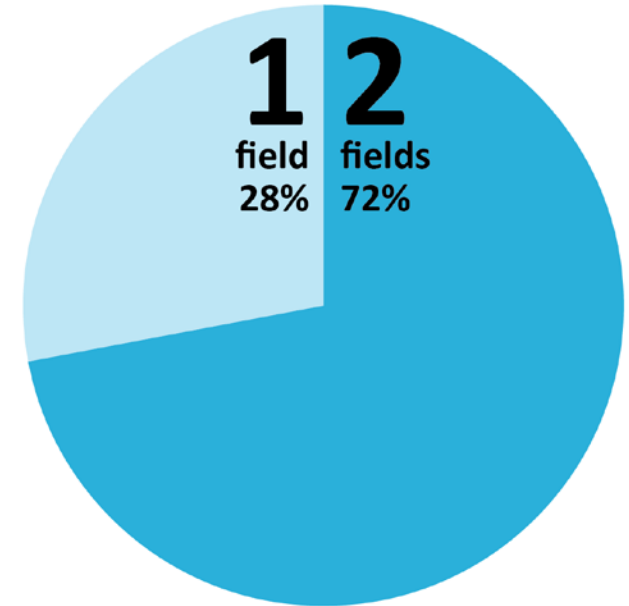
## Nearby Residents



## Broader Community



## All Respondents\*



**\*73% of 1288 survey respondents self-identified as sportsfield users**



# Kirkstone Park: ATF Conversion



# Argyle Secondary School: Potential Lit Artificial Turf Field (2020)





# Recommendation

THAT staff is directed to proceed with one artificial turf field plus warm-up area in Inter River Park;

AND THAT staff is directed to continue to formalize a partnership with the School District 44 to develop an artificial turf field at Argyle School;

AND THAT the program to convert gravel all-weather fields to artificial turf field surfaces, where feasible, is supported.

# Comments and Questions

DISTRICT OF  
**NORTH  
VANCOUVER**



Thank you!

