



NORTH VANCOUVER  
DISTRICT

# Single Family Garbage and Organics Collection Plan

June 17, 2013

Council Committee of the Whole

# Workshop Agenda

- Review
- Council Feedback
- Recommendation
- Benefits
- Financial Impacts
- Rate Comparison

# Review

- Current single family curbside waste diversion rate  $\approx$  54%. 2015 Single family Target = 65%
- About half current curbside garbage is organics or recyclables
- Most residents felt it was very important that DNV manage its' waste responsibly but meeting Metro waste diversion targets was less important
- Residents are generally very happy with solid waste collection services
- More residents prefer wheeled carts

# Council Feedback

- Council workshops October 2012 & April 2013
- Continue to support efforts to improve reduce, reuse and recycle
- Concerned about levels of service
- Concerned about costs
- Questions about the impact of the Extended Producer Responsibility (EPR) program for Packaging and Printed Paper (PPP) on the waste streams

# Recommendation

- District of North Vancouver provides each single family home with a dedicated locking 240 litre or 140 litre wheeled cart for curb side organics collection. The cost of the carts is to be included in the Solid Waste rate over 10 years.
- In the fall of 2013, once the details of the proposed PPP EPR are better known, staff will bring back to Council recommendations regarding bi-weekly garbage collection and the provision of locking carts for garbage

# Benefits

- Reduces the lifting of heavy organics.
- Provides a bear resistant means of storing food waste.
- Meets the resident's preference for a wheeled cart.
- Improves diversion of material from the garbage stream to the organics stream.
- Allows for more complete information on the PPP EPR before making a final decision on bi-weekly garbage collection and the provision of garbage carts
- Rates remain in-line within the region

# Financial Impact

## 2014 Projections Phase 1

	Status Quo	Green Cart	Revised
Solid waste rate	\$ 212.20	\$ 15.90	\$ 228.10
Projected garbage reduction	-3.0%	-12.0%	-15.0%
Impact on diversion rate	-1.3%	-5.2%	-6.5%
Diversion rate	57.8%	63.0%	63.0%

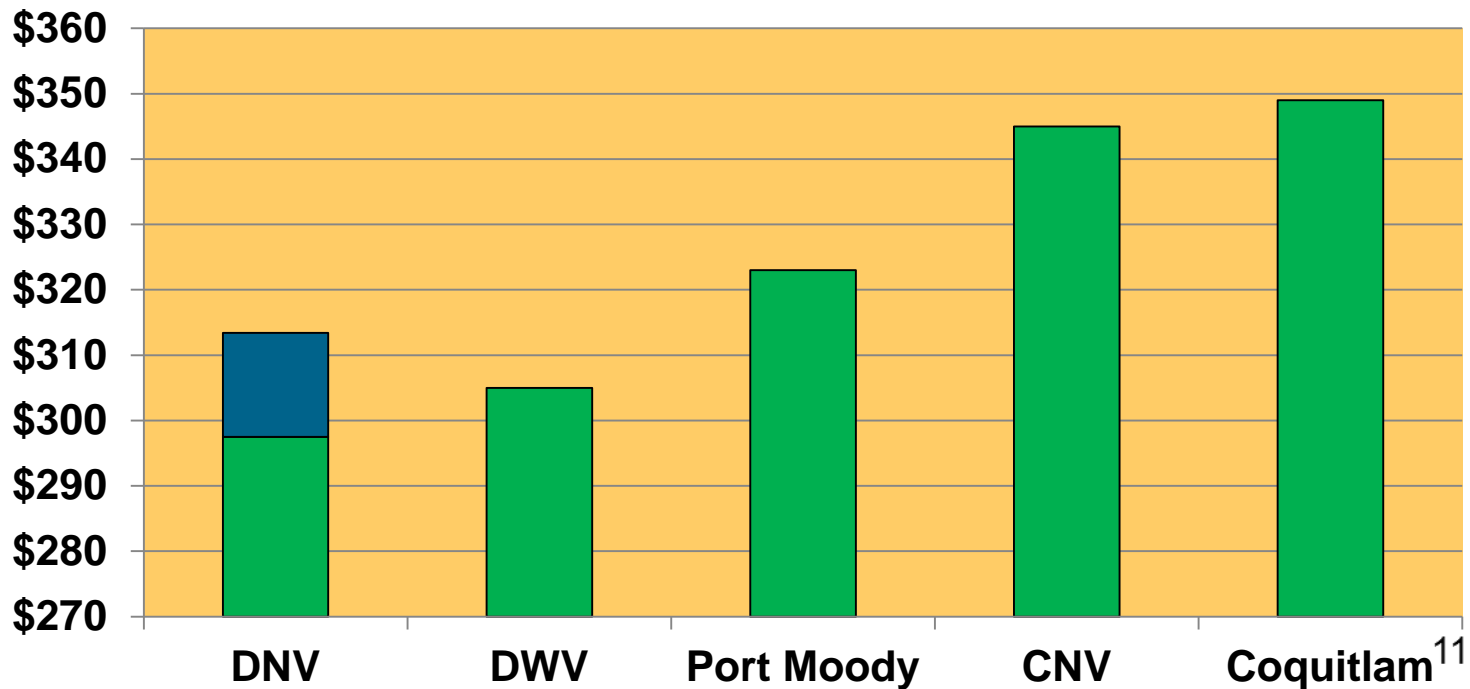
### Notes:

1. PPP EPR initiative is expected to divert 3% of garbage to recycling.
2. Impact to each single family home is \$15.90 per year or 31 cents per organic collection (based on 52 pickups).

# Municipal Solid Waste Rates

## 2013 Residential Disposal Rates

■ Approx. impact of proposed change ■ Garbage, Organics & Recycling







NORTH VANCOUVER  
DISTRICT

# **Metro Vancouver Waste Flow Management**

**District of North Vancouver  
June 17, 2013**

**Paul Henderson, P.Eng**  
General Manager, Solid Waste Services  
[Paul.Henderson@metrovancover.org](mailto:Paul.Henderson@metrovancover.org)





# Waste Management Roles

- **Regional Government** – Zero Waste planning and residential and commercial garbage disposal
- **Municipal Government** – residential garbage and recycling collection
- **Private Sector** – service delivery to all sectors



# Regional Facilities

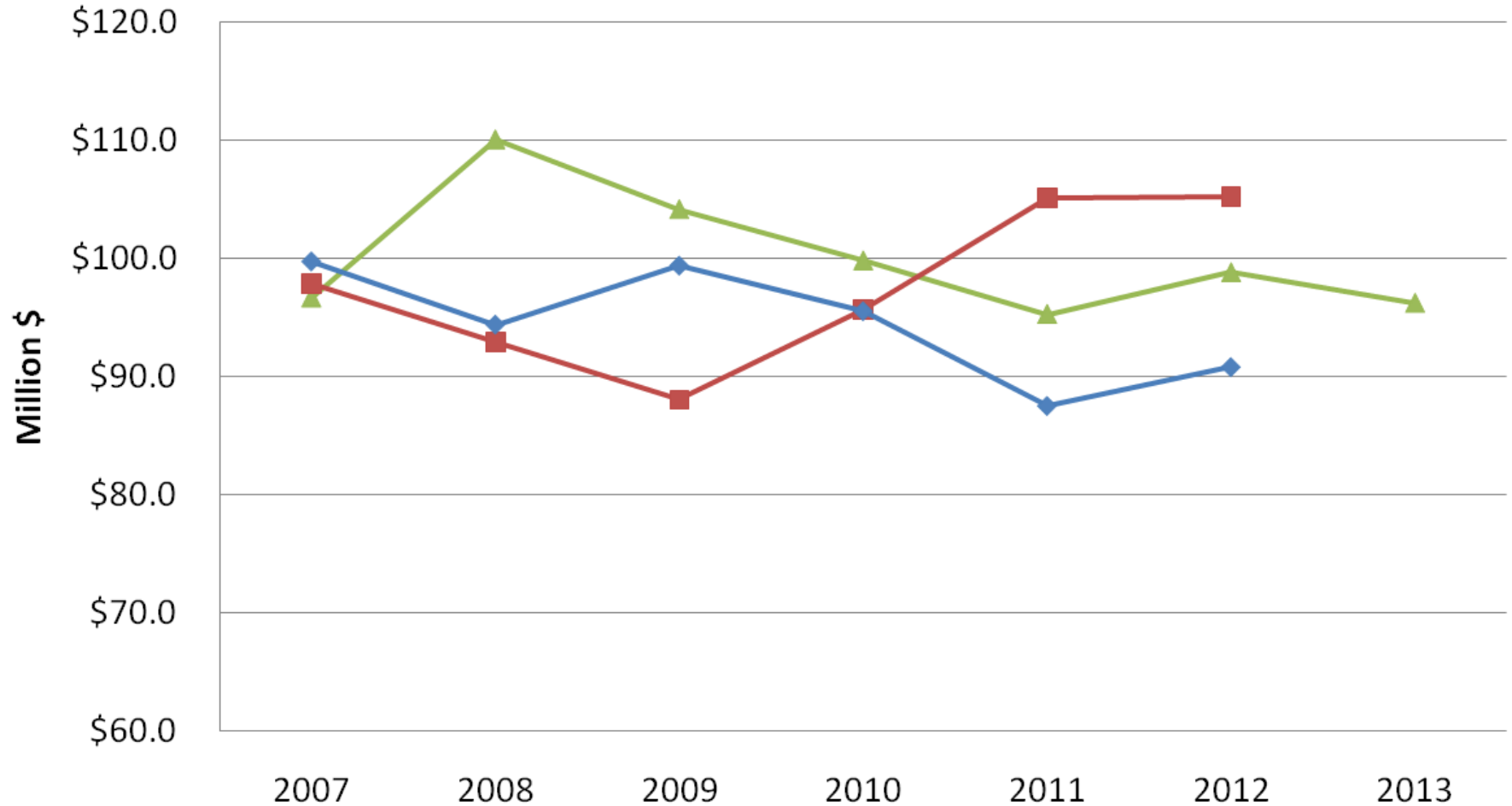


**Regional Facilities: Six Metro Vancouver Transfer Stations, the City of Vancouver Transfer Station and Landfill, and the Waste-to-Energy Facility**

# Metro Vancouver Solid Waste Function 2007 - 2013

## Budget, Revenue and Actual Expenditures

—▲— Budget    —■— Revenue    —◆— Actual Exp



Tipping Fee  
(\$/t)

\$65

\$68

\$71

\$82

\$97

\$107

\$107

2012 Contribution to capital of \$3,857,685 has been removed from Actual Expenditure.



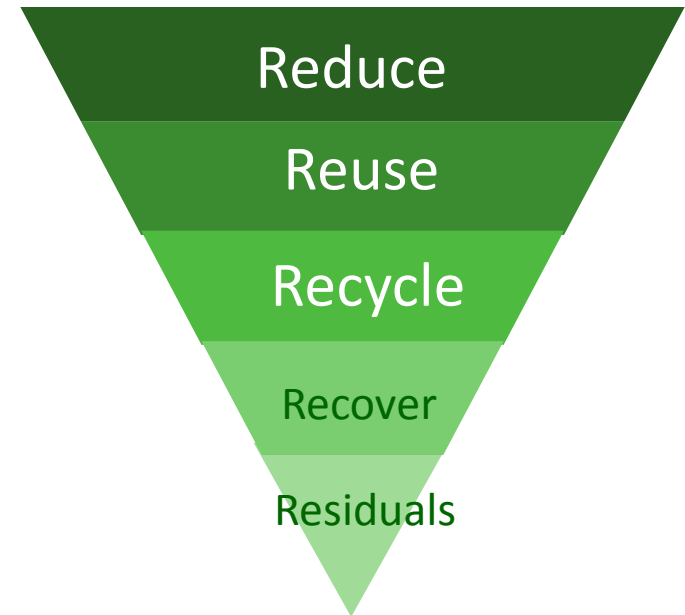
# Integrated Solid Waste and Resource Management Plan

*GOAL 1 Minimize waste generation*

*GOAL 2 Maximize reuse, recycling, and material recovery*

*GOAL 3 Recover energy from waste stream after recycling*

*GOAL 4 Dispose of all remaining waste in landfill after material and energy recovery*



# Public Expectations

- 10% reduction in per capita waste generation by 2020
- Increase diversion rate
  - 70% by 2015
  - 80% by 2020
- Cost effectiveness
- Convenient recycling






# Key Waste Diversion Tools


- Existing and new disposal bans
  - Organics and Wood (2015)
- Managed garbage disposal fees
- Private sector investment and innovation



# Current Situation

- One major hauler by-passing Regional Facilities with multi-family residential and commercial garbage since fall 2011
    - Avoids bans and prohibitions
    - Does not contribute to cost of waste management system including Zero Waste initiatives
    - Creates uneven playing field
- 

# Potential Consequences

- Inability to implement disposal bans
  - Inability to achieve ISWRMP diversion targets
  - Lost economies of scale
    - Increased tipping fees without encouraging additional diversion
    - Reduced service levels
    - Inability to develop new and replacement infrastructure
  - Compromises local recycling industry
- 

# Waste Flow Management

- Control of disposal system allows maximum diversion
- Consulting on options for Waste Flow Management
- Proposing requirement to deliver residential and commercial garbage to Regional Facilities
- Exemptions for source-separated recyclables, C&D, etc.
- Support for local recycling industry



**ICI and Residential Waste**

**Proposed Flow Management Measures**

**Renovation & Construction  
Material**

**Revisions to Bylaw 181 & Expanding  
Regional TS Capacity**

**Recyclables**

**Revisions to Bylaw 181 & Expanding  
Regional TS Capacity**

**Single Family Waste**


**Municipally Contracted Collection**

**Demolition Material**

**Demolition Recycling  
Sample Municipal Bylaw**



# Zero Waste Committee Feedback

- Zero Waste Committee June 6 asked for more information on:
    - Viability of mixed waste material recovery facilities (MWMRF)
    - Potential lost opportunities if exclude MWMRFs
    - Opportunities to incorporate MWMRFs while ensuring source separation
    - Ability to license MWMRFs
- 



# Next Steps

- Consider feedback from consultation and engagement
  - Phase 2: March 18 – May 31
- Strategy to Metro Vancouver Board: July 2013
- Any bylaw requires Provincial approval

More Information:

<http://www.metrovancouver.org/services/solidwaste/planning/Engagement/Pages/WasteFlowManagement.aspx>





# Printed Packaging and Paper Update

- Background
- Materials Added
- Options
- Timeline and Next Steps



# Printed Packaging and Paper: Background

Extended Producer Responsibility (EPR):

"An environmental policy approach in which a producer's responsibility, physical and/or financial, for a product is extended to the post-consumer stage of a product's life cycle."

- *Organization for Economic Cooperation & Development*

  
**Multi-Material**  
British Columbia

Board of Directors:



**Overwaitea Food Group**



# Additional Materials

Everything we collect now plus:

## Collected Curbside



## Depot Only



## Glass?





# Options

Single-family



Multi-family



Depot



# Timeline and Next Steps

